



Mississippi University for Women

FOUNDED 1884 COEDUCATIONAL SINCE 1982



2023-24 Fact Book

Office of Institutional Research and Assessment
Reneau Hall - 118
1100 College St., MUW160
Columbus, MS 39701
662-329-8543

Mississippi University for Women 2023-24 Fact Book

**Office of Institutional Research and Assessment
Reneau Hall - 118
1100 College St., MUW - 160
Columbus, MS 39701
(662)-329-8543**

Mississippi University for Women
2023-24 Fact Book
 Table of Contents

University Organizational Chart..... 1
MUW Vision, Mission, & Guiding Principles 2
MUW Strategic Priorities and Goals 4
MUW Accolades & Achievements..... 6
Fall 2023 MUW Profile..... 8
EAC Report Card: 2021-22..... 10

1. First-Time Student

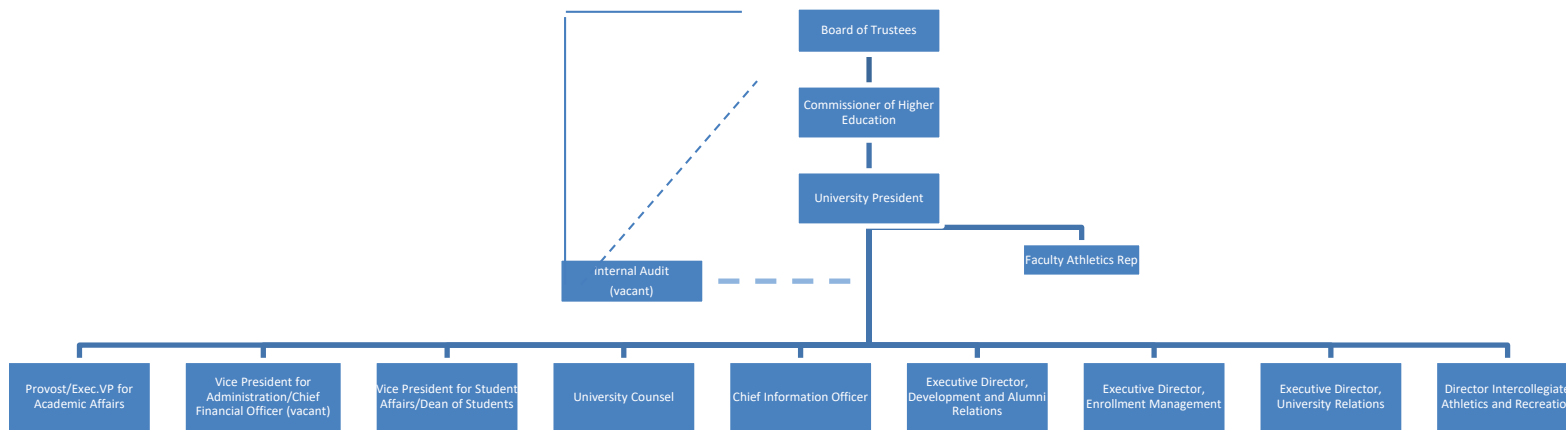
1.1 First-Time Freshman Enrollment & Funnel Rates: Fall Terms 12
 1.2 First-Time, Full-Time Bachelor’s Degree Seeking Freshman Headcount: Graph: Fall Terms 12
 1.3 First-Time Transfer Enrollment & Funnel Rates: Fall Terms..... 13
 1.4 First-Time, Full-Time Bachelor’s Degree Seeking Transfer Headcount: Graph: Fall Terms 13
 1.5 First-Time, Undergraduate Degree Seeking Student ACT & SAT Scores: Fall Terms..... 14
 1.6 First-Time, Full-Time Bachelor’s Degree Seeking Freshman Cohort Retention & Graduation Rates..... 15
 1.7 First-Time, Full-Time Bachelor’s Degree Seeking Transfer Cohort Retention & Graduation Rates..... 16

2. Student Enrollment

2.1 Unduplicated Headcount and FTE Enrollment: Fall Terms..... 17
 2.2 Duplicated Headcount by Campus: Fall Terms 17
 2.3 Unduplicated Headcount and FTE Enrollment: Spring Terms 18
 2.4 Unduplicated Headcount and FTE Enrollment: Summer Terms 18
 2.5 Unduplicated Enrollment by Gender: Fall Terms 19
 2.6 Unduplicated Enrollment by Race/Ethnicity: Fall Terms 19
 2.7 Unduplicated Enrollment by Race/Ethnicity, Gender and FT/PT Status: Fall Terms 20
 2.8 Unduplicated Enrollment and Credit Hr. Production by FT/PT Status: Fall Terms 21
 2.9 Unduplicated Enrollment by Student Classification: Fall & Spring Terms 22
 2.10 Unduplicated Enrollment by Credit Hrs. and Student Classification: Fall 2023 23
 2.11 12-Month Headcount and FTE Enrollment..... 24
 2.12 Unduplicated Enrollment by Age Distribution and Student Classification: Fall Terms 25
 2.13 Unduplicated Enrollment by Non-traditional and Traditional Students: Fall Term 26
 2.14 Residence Hall Student Enrollment: Fall Terms..... 27
 2.15 Unduplicated Enrollment by Residence Hall and Commuter Students: Fall Terms 28
 2.16 Unduplicated Enrollment by Course Method: Fall Terms 29
 2.17 Unduplicated Enrollment by State of Residence: Fall Terms 30
 2.18 Unduplicated Enrollment by Country: Fall Terms..... 32
 2.19 Unduplicated Enrollment by MS County: Fall Terms 33
 2.20 Unduplicated Enrollment by IHL Official API: Fall 2023 36
 2.21 Unduplicated Enrollment by IHL Official API: Spring 2024 37

3. Program Enrollment & Degrees Awarded	
3.1 Unduplicated Enrollment by College & Department: Fall Terms	38
3.2 Unduplicated Enrollment by College, Department, & Major/Concentration: Fall Terms	39
3.3 Unduplicated Enrollment by Minor: Fall Terms.....	43
3.4 Unduplicated Enrollment by Second Major: Fall Terms	46
3.5 Class Type Enrollment: Fall Terms	48
3.6 Credit Hour Generation by College & Department: 3 Years	49
3.7 Online Credit Hour Generation by College and Department: 3 Years	51
3.8 Degrees Awarded by IHL Official API: AY 2023.....	53
3.9 Degrees Awarded by CIP, Major/Concentration, Race/Ethnicity and Gender: AY 2023	54
3.10 Degrees Awarded: Chart: AY 2023	58
3.11 History of Degrees Awarded by Program and CIP: 5 Years	59
3.12 History of Degrees Awarded by Program, CIP, & Gender: 5 Years	61
3.13 Top Bachelor and Master Degrees Awarded in the Last 5 Years: Chart	63
3.14 History of Degrees Awarded by Academic Level: 10 Years	64
3.15 Degrees Awarded by CIP and Major/Concentration: 5 Years	65
3.16 Degrees Awarded by Second Major: 5 Years	68
4. Faculty	
4.1 Faculty Profile.....	69
4.2 Faculty Credit Hour Production by Course Level.....	70
4.3 Employee Profile by EEOC	71
5. Revenues and Expenditures	
5.1 Summary of Budgeted E&G Revenues and Expenditures.....	72
5.2 2023-2024 E&G Revenues and Expenditures by Budget Entity: Chart	73
5.3 Authorization of State Gen. Obligation Bonds for IHL & MUW FY 2004-2023	74
MUW Accreditation Information	75
MUW Organizational Chart – Provost/Vice President for Academic Affairs & Academic Units....	77
Appendix A: Endnotes	78
Appendix B: Explanation of Terms	81
Campus Map	87

MUW Organizational Chart



8/4/2023

Mississippi University for Women

Vision, Mission and Guiding Principles

Vision

Building on its long tradition of excellence in liberal arts and professional education, as well as its historic focus on academic and leadership development for women, Mississippi University for Women will continue to be a university that prepares both women and men for successful lives by providing a high-quality education in a personalized learning environment.

Mission

Mississippi University for Women provides high quality undergraduate and graduate education for women and men in a variety of liberal arts and professional programs while maintaining its historic commitment to academic and leadership development for women. Emphasizing a personalized learning experience, the University engages in a variety of instructional methodologies to provide educational opportunities in a diverse and inclusive environment. The institution promotes research, scholarship, and creativity to enhance student development and achievement as a platform for lifelong education and growth.

Revised October 21, 2021.

Guiding Principles

MUW provides high-quality instructional programs that emphasize teaching and learning. With faculty and staff of the highest caliber, MUW is dedicated to providing a campus environment that encourages lifelong learning, strong career preparation, and personal growth. Graduates are expected to have skills in communication, technology, and critical thinking, as well as an awareness of self, gender-related issues, cultural diversity, and responsible citizenship.

MUW is student oriented. MUW provides small classes and emphasizes personalized student attention, so that each student will have the opportunity to succeed. MUW offers a student-life program that stimulates learning and leadership development.

MUW values research, scholarship, and creativity. While MUW is primarily a teaching institution, the university supports research, scholarship, and creativity to enhance the professional development of faculty and staff in order to better prepare students.

MUW is committed to diversity among its faculty, staff, and students. The faculty, staff, and students of MUW represent the global society in which we live. MUW believes that diversity allows students to grow in their understanding of self and others.

MUW endorses sound organizational principles and is committed to operational efficiency, collaborative strategic planning, institutional effectiveness, and creative problem solving.

MUW meets regional, state, and national needs for higher education. The University responds to the needs of the local community by providing cultural activities; programs for intellectual, professional, and social development; and by assisting in economic development. MUW extends its outreach to the state and nation using multiple delivery methods, including the internet and other advanced systems.

MUW is committed to public service. MUW forms partnerships with businesses, as well as with educational, governmental, public service, and charitable organizations, to create opportunities that provide economic and social advantages for the institution, community, and region.

Approved by the Mississippi IHL Board on January 15, 2004

Mississippi University for Women

Strategic Priorities and Goals 2021 - 2026

Academic Excellence

Academics are at the heart of a W education. Our dedicated faculty, respected in their fields, champion a commitment to teaching shaped by their research, scholarship, and creative expressions. Partnered with an equally committed staff, they foster a learning environment that is both broad and highly personalized. For the W, academic excellence results in graduates who are equipped for the competitive and diverse global economy.

- Provide a comprehensive academic experience
- Prepare students to be life-long learners and contributing members of today's global economy
- Provide resources to foster excellence in teaching
- Recruit and retain a diverse faculty and staff

Advancement Excellence

A strength of any institution is the level of engagement with those it serves. At The W, that includes a diversity of constituents: students, faculty, staff, alumni, friends, the community, and elected officials. By cultivating these relationships, we build support critical to the future of The W. One important outcome of valued relationships is the continued generosity of our larger W family, providing resources that allow us to improve quality across all aspects of the institution.

- Continue a culture of giving
- Foster pride in the university and its programs
- Offer more programming representative of diverse alumni base
- Provide resources to assist students financially
- Enhance services to shape career-ready graduates

Community Connections

The W's unique niche is not confined by geographic boundaries. By serving its communities through programs and partnerships, both locally and globally, the university will continue to communicate its value and explore ways to create significant impact through its areas of strength. It should also identify innovative and diverse approaches that enhance health, quality of life, cultural enrichment, and society's overall economic potential.

- Cultivate collaborations to create healthy and vibrant communities.
- Provide outreach to underserved and diverse populations of our communities

- Forge meaningful and engaged partnerships that provide real-life experiences for students
- Contribute to the cultural enrichment of our communities

Degree Completion

The W recognizes that Degree Completion requires recruitment, retention, and support through graduation and into a career. We aim to provide wholistic support for all students throughout their time at the university.

- Recruit a diverse student body to ensure a vital university community
- Provide equal access to advising, mentoring, and support services to all students
- Assist students to maintain financial, physical, emotional, and mental well-being
- Support students through degree completion and into their careers

Diversity, Equity & Inclusion

The W is on a mission to create a welcoming, diverse, equitable, and inclusive campus climate for all. As the university strives to reach the highest levels of academic excellence, it's also essential that the university foster an environment where all members of the campus community can flourish. Diversity recognizes the value of varied perspectives which helps drive innovative solutions to an ever-changing world.

- Create an inclusive and equitable campus climate reflective of the growing diversity in our communities, state and nation
- Communicate mission and or vision statement on inclusive values
- Connect internal and external constituencies to opportunities at the university
- Capture, promote and enhance overall curriculum and programming that enhances multicultural awareness and understanding

Financial Sustainability

A financial model supports the efforts and goals of academics, student services, and the campus as a whole. The W's mission-driven approach involves clear strategic planning and actions that ensure the ongoing financial health of the University.

- Develop a strategic budget model
- Enhance and maintain campus infrastructure and facilities
- Invest in faculty and staff hiring and development

MUW Accolades & Achievements

- U.S. News & World Report (*U.S. News & World Report* is a multifaceted digital media company that uses world-class data and technology to publish independent reporting and rankings.)
 - Ranked 5th as Best Value among Southern Regional Universities.
 - Ranked 2nd as Best Value among Public Southern Regional Universities.
 - Tied 10th as Top Public University among Southern Regional Universities.
 - Tied 27th as Top University among Southern Regional Universities
 - Tied 8th as Best Colleges for Veterans among Southern Regional Universities.
 - Tied 7th as Best Public Colleges for Veterans among Southern Regional Universities.
 - Tied 5th in Top Performers on Social Mobility among Public Southern Regional Universities.
 - Tied 16th in Top Performers on Social Mobility among Southern Regional Universities.
 - Tied 154th as Best Undergraduate BSN Nursing Program in the nation.
 - Tied 115th as Best Public Undergraduate BSN Nursing Program in the nation.
 - Tied 28th in Best Campus Ethnic Diversity among Southern Regional Universities.
 - Ranked 45th in Best Economic Diversity among Southern Regional Universities.
 - Ranked 1st in Least Debt at Graduation among Southern Regional Universities.
 - Tied 31st in Freshman Retention Rate among Southern Regional Universities.
- The Chronicle of Higher Education (*The Chronicle of Higher Education* is the nation's largest newsroom dedicated to covering colleges and universities.)
 - For the eleventh consecutive year, MUW was recognized as a Great College to Work For, earning honors in Supervisor/Department Chair Effectiveness and Shared Governance.
- Niche.com (Niche is the market leader in connecting colleges and schools with students and families through in-depth profiles on every school and college in America, over 140 million reviews and ratings, and powerful search and data tools.)
 - Ranked as Best College for Nursing in the state
 - Ranked 18th as Best College for Nursing in the nation
 - Ranked 16th as Best College for Culinary Arts in the nation
 - Ranked 76th as Best Liberal Arts College in the nation
 - Ranked 2nd as Best Value College in the state
 - Ranked 4th as Best Small College in the state
 - Ranked 4th in Top Public Universities within the state
 - Ranked 5th in Best College Campuses within the state
- Additional Honors
 - Ranked 1st in Best RN Programs in Mississippi – RegisteredNursing.org
 - The W leads the state's public university system with the highest degree completion rate at 33.9 undergraduate degrees awarded per 100 undergraduate full-time equivalent (FTE) enrollment.
 - Washington Monthly ranked MUW 15th in the Best Bang for the Buck – South category.

MUW Employees

MUW has approximately 336 full-time employees.

- Approximately 68% of full-time employees are female.
- Approximately 32% of full-time employees are male.
- Approximately 25% of full-time employees are minorities.

MUW has approximately 115 part-time employees.

Student Fees Per Semester: Academic Year 2023-2024

Undergraduate Tuition	Tuition	Capital Improvement Fee	Total
Full Time (12-19 credits)	\$3,996.00	\$50.00	\$4,046.00
Per Credit Hour	\$333.00	\$4.17	\$337.17
Graduate Tuition			
Full Time (9-13 credits)	\$3,996.00	\$50.00	\$4,046.00
Per Credit Hour	\$444.00	\$5.56	\$449.56

Grounds and Buildings

The campus covers more than 114 acres within the historic district of central Columbus, MS. Twenty-three of more than 60 buildings are listed on the National Register of Historic Places.

Fall 2023 Profile

Fall 2023	Fall 2022	% Change	Category - University
2,227	2,339	-4.8%	Total Unduplicated Headcount
1,806	1,892	-4.5%	Total FTE
1,601	1,667	-4.0%	Full-time
626	672	-6.8%	Part-time
1,732	1,821	-4.9%	Gender: female
495	518	-4.4%	Gender: male
741	821	-9.7%	Race/Ethnic: African-American/black
1,339	1,385	-3.3%	Race/Ethnic: white
147	133	10.5%	Race/Ethnic: other
1,920	2,024	-5.1%	Citz/Residency: domestic/MS
79	82	-3.7%	<i>MS Counties Represented</i>
283	296	-4.4%	Citz/Residency: domestic/US States (Non MS)
36	33	9.1%	<i>US States Represented (Non MS)</i>
24	19	26.3%	Citz: International
13	9	44.4%	<i>Countries Represented</i>
723	826	-12.5%	Online Enrollment (Only)
546	710	-23.1%	Face-to-Face Enrollment (Only)
958	803	19.3%	Mixed Enrollment
1,647	1,717	-4.1%	Age: Traditional <= 24
580	622	-6.8%	Age: Non-Traditional >=25
24.2	24.3	-0.4%	Age: Average
1,995	2,080	-4.1%	Undergraduate Headcount
232	259	-10.4%	Graduate Headcount
356	381	-6.6%	College: Arts & Sciences
365	418	-12.7%	College: Business & Professional Studies
950	992	-4.2%	College: Nursing & Health Sciences
143	152	-5.9%	College: School of Education
413	396	4.3%	College: University
425	381	11.5%	Dorm
1,802	1,958	-8.0%	Commuter

Fall 2022 to Fall 2023	Fall 2021 to Fall 2022	Category - FT-FT Bachelor's Retention
71.7% (86 of 120)	73.3% (121 of 165)	1 Year Retention Rate - FT-FT, Bach. Freshmen
84.2% (385 of 457)	87.6% (408 of 466)	1 Year Retention/Grad Rate - FT-FT, Bach. Transfer
44.4% (203)	43.8% (204)	1 Year Retention Rate - FT-FT, Bach. Transfer
39.8% (182)	43.8% (204)	1 Year Grad Rate - FT-FT, Bach. Transfer

Fall 2017 to Fall 2023	Fall 2016 to Fall 2022	Category - FT-FT Bachelor's Graduation
37.3% (81 of 217)	37.4% (104 of 278)	6 Year Graduation Rate - FT-FT, Bach. Freshmen
78.0% (508 of 651)	78.8% (476 of 604)	6 Year Graduation Rate - FT-FT, Bach. Transfer

Fall 2023 Profile

Fall 2023	Fall 2022	% Change	Category - New Students
652	640	1.9%	New Students (Freshman & Transfer)
159	125	27%	Freshman Cohort Total
7%	5%		<i>Percent of Total Headcount</i>
156	120	30.0%	FT-FT, FR Bachelor's Degree Seeking
2	3	-33.3%	FT-PT, FR Bachelor's Degree Seeking
1	1	0.0%	FT-FT, FR Other Degree Seeking
0	1	-100.0%	FT-PT, FR Other Degree Seeking
156	125	24.8%	Freshman Cohort Citizenship: Domestic
3	0	-	Freshman Cohort Citizenship: International
20.7	20.4	1.5%	FT-FT, FR Bachelor's - ACT Composite Average
20.6	20.5	0.5%	FT-FT, FR Bachelor's - ACT & Conv. SAT Composite Avg.
493	515	-4%	Transfer Cohort Total
22%	22%		<i>Percent of Total Headcount</i>
434	457	-5.0%	FT-FT, TR Bachelor's Degree Seeking
24	30	-20.0%	FT-PT, TR Bachelor's Degree Seeking
32	25	28.0%	FT-FT, TR Other Degree Seeking
3	3	0.0%	FT-PT, TR Other Degree Seeking
189	209	-9.6%	Transfer Cohort Major: RN/BSN Tupelo

AY 2023	AY 2022	% Change	Category - Degrees Awarded
870	927	-6.1%	Total Degrees Awarded
37	35	5.7%	Degrees Awarded: ASN
705	746	-5.5%	Degrees Awarded: BACH
122	134	-9.0%	Degrees Awarded: MASTER
6	12	-50.0%	Degrees Awarded: DNP

FY 2023	FY 2022	% Change	Category - IPEDS HC & FTE
2,973	3,240	-8.2%	12-Month IPEDS Headcount
2,610	2,834	-7.9%	Undergraduate Headcount
363	406	-10.6%	Graduate Headcount
2,170	2,327	-6.7%	12-Month IPEDS FTE
1,926	2,050	-6.0%	Undergraduate FTE
244	277	-11.9%	Graduate FTE

Fall 2023	Fall 2022	Category - IPEDS Student Faculty Ratio
10 to 1	11 to 1	Student to Faculty FTE Ratio



	This Institution		University System Average	
	Number	Percent	Number	Percent
Student Enrollment				
Total Headcount Enrollment	3,248		10,972	
Undergraduate	2,842	87.5%	8,239	75.1%
Graduate & Professional	406	12.5%	2,733	24.9%
Total Full-Time Equivalent (FTE) Enrollment	2,327		8,772	
Undergraduate	2,050	88.1%	6,982	79.6%
Graduate & Professional	277	11.9%	1,790	20.4%
New Undergraduate Students (Percent of Total Undergraduates)	833	29.3%	2,432	29.5%
Entering Freshmen	179	6.3%	1,336	16.2%
Entering Transfers - MS Community Colleges	523	18.4%	758	9.2%
Entering Transfers - All Other Institutions	131	4.6%	339	4.1%
Undergraduate Enrollment in High-Need Disciplines (Percent of Total Undergraduates)	1,012	35.6%	3,277	39.8%
Science, Technology, Engineering, Mathematics (STEM)	101	3.6%	2,268	27.5%
Education (Including Non-Teaching Areas)	45	1.6%	572	6.9%
Nursing (All Undergraduate Levels)	866	30.5%	437	5.3%

Degrees Awarded				
Undergraduate Degrees per 100 Undergraduate FTE Enrollment	33.9	--	23.9	--
Total Degrees Awarded	927		2,483	
Certificate	0	0.0%	24	0.9%
Associate	35	3.8%	7	0.3%
Baccalaureate	746	80.5%	1,746	70.3%
Graduate and Professional	146	15.7%	706	28.4%
Undergraduate Degrees in High-Need Disciplines (Percent of Total Undergraduates)				
Science, Technology, Engineering, Mathematics (STEM)	27	3.5%	456	25.7%
Education (Including Non-Teaching Areas)	33	4.2%	154	8.7%
Nursing (All Undergraduate Levels)	414	53.0%	209	11.8%
Graduate Degrees in STEM Disciplines (Percent of Total Graduate Degrees)	0	0.0%	133	18.9%

College Readiness				
Average ACT Score of Entering Freshmen, Fall 2021	20.7	--	23.7	--
Students enrolled in One or More Intermediate Courses, Fall 2021	105		465	
Students enrolled in intermediate math during first year	55	52.4%	192	41.3%
Students enrolled in intermediate English/reading during first year	8	7.6%	129	27.7%
Students enrolled in both math and English/reading during first year	42	40.0%	144	31.0%
Fall 2019 intermediate math students completing math gateway course in 2 years	--	41.9%	--	66.6%
Fall 2019 intermediate English students completing English gateway course in 2 years	--	65.7%	--	67.1%

Student Progress				
Percent of full-time students completing 24 credit hours within one academic year	--	80.4%	--	78.5%
Percent of part-time students completing 12 credit hours within one academic year	--	30.0%	--	45.3%
One-Year Retention Rates for Entering Full-Time Freshmen, Fall 2020 returning in Fall 2021	--	75.1%	--	80.1%
Graduation Rates of First-time, full-time Freshman Cohort, Fall 2014	222		1,372	
Cohort students graduating within 4 years (100% of normal time)	79	35.6%	513	37.4%
Cohort students graduating within 6 years (150% of normal time)	104	46.8%	784	57.1%
Cohort students graduating within 8 years (200% of normal time)	109	49.1%	809	59.0%

Research				
External Research Dollars – All Sources (in Millions)	\$5.8	--	\$84.3	--
Percent of External Research from Federal Sources	7.2%	--	84.6%	--
Number of Research Projects Supported	12	--	280	--

Other University Variables				
Percent of median family income required to cover tuition and fees	31.9%	--	35.8%	--
Total state expenditures per total FTE student	\$15,632	--	\$17,849	--
Percent of Full-Time Instructional Faculty with Terminal Degree, Fall 2021	70.7%	--	81.0%	--



Academic Year 2021-22 (AY2021-22) – The Institutional Profile is for the 2021-22 academic year and includes the Summer 2021, Fall 2021, and Spring 2022 terms. Some reporting terms may vary depending on the length of time for each metric.

University System Average – The university system average is based on eight institutions and includes the Medical Center with the University of Mississippi in most instances. Figures including UMMC data are denoted with an asterisk (*).

Total Headcount Enrollment – Total headcount enrollment figures are unduplicated for the academic year. Academic level and degree objective are for enrollment are based on the last term of attendance for the year. [Source: IHLMIS]

Total Full-Time Equivalent (FTE) Enrollment – Total full-time equivalent enrollment figures are based on undergraduate and graduate credit hour activity over a 12-month period. Calculation uses a trailing summer in accordance with IPEDS. [Source: Federal IPEDS]

Entering Freshmen – Entering freshmen figures are based on an unduplicated count of entering freshmen at any point during the academic year. [Source: IHLMIS]

Entering Transfers – Entering transfer figures are based on an unduplicated count of entering transfer students at any point during the academic year from Mississippi's community colleges and all other postsecondary institutions. [Source: IHLMIS]

Science, Technology, Engineering, Mathematics (STEM) Enrollment & Degrees – STEM enrollment includes the number of undergraduate students majoring in science, technology, engineering, and mathematics as defined by the National Science Foundation (NSF). A complete listing of the NSF-STEM majors can be found at <http://www.ice.gov/doclib/sevis/pdf/stem-list.pdf> [Source: IHLMIS]

Education (Including Non-Teaching Areas) and Nursing Enrollment (All Undergraduate Levels) Enrollment & Degrees - Education enrollment includes the number of undergraduate students majoring in any education discipline according to the 13 CIP code. This includes teaching and non-teaching education majors. Nursing enrollment includes the number of undergraduate students majoring in any nursing discipline. [Source: IHLMIS]

Undergraduate Degrees per 100 Undergraduate FTE Enrollment – Figures indicate the number of undergraduate degrees awarded per 100 undergraduate FTE students. Undergraduate degrees include certificates, associates, and baccalaureate degrees. Undergraduate FTE is based on a four-year average of annual undergraduate FTE figures. [Source: Degrees – IHLMIS; Student FTE – Federal IPEDS]

Intermediate Enrollment – It should be noted that institutions have varying academic policies regarding intermediate enrollment. Intermediate enrollment includes the number of students taking one or more Intermediate courses. The three intermediate groups (math only, English only, and both math and English) are treated as three separate groups. Figures are based on Fall term data and exclude the Academic Support Lab. [Source: IHLMIS]

Student Progress – Full-time status includes students taking 12 or more hours during the fall term while part-time students include students taking less than 12 hours during the fall term. Students earning zero credit hours for the entire academic year were excluded from the metric since most were not enrolled for the entire academic year. [Source: IHLMIS]

Retention Rates – Retention rates reflect the percentage of first-time, full-time entering freshmen during the Fall 2020 term who return for the Fall 2021 term. [Source: Federal IPEDS]

Graduate Rates – Graduation rates reflect the percentage of first-time, full-time freshmen during the Fall 2014 term who graduated at 4-year (100% of normal time), 6-year (150% of normal time), and 8-year (200% of normal time) intervals. [Source: Federal IPEDS]

External Research Dollars – External funds provided to the university by a variety of sources (primarily federal) for the purpose of advancing the research mission of the institution as well as contributing to teaching and service missions. Research dollars for this report does include federal CARES funds associated with COVID. [Source: IHL Universities]

Percent of Median Family Income Required to Cover Tuition and Fees – The median household income figure was derived from the American Community Survey (ACS) conducted by the U.S. Census. The tuition and fee figures reflect 2020-21 tuition and fees with average room (for double occupancy) and board (average plan) charges approved by the IHL Board. [Sources: U.S. Census & IHL Finance]

State Expenditures per Total FTE Student – State expenditures for FY2022 were calculated by combining on-campus and off-campus expenditures minus capital expense funds using institutional MBR reports. FTE student figures were derived using 12-month figures from IPEDS. [Source: Federal IPEDS and IHL Finance MBR Reports]

Instructional Faculty with Terminal Degree – Figures represent the percentage of full-time instructional faculty with a terminal or first-professional degree. Terminal degrees also include master's degrees in fine arts (M.F.A.), social work (M.S.W.) and library science (M.L.S.). [Source: IHLMIS]

First-Time Freshman: Enrollment & Funnel Rates | Table 1.1
Fall 2019 - 2023

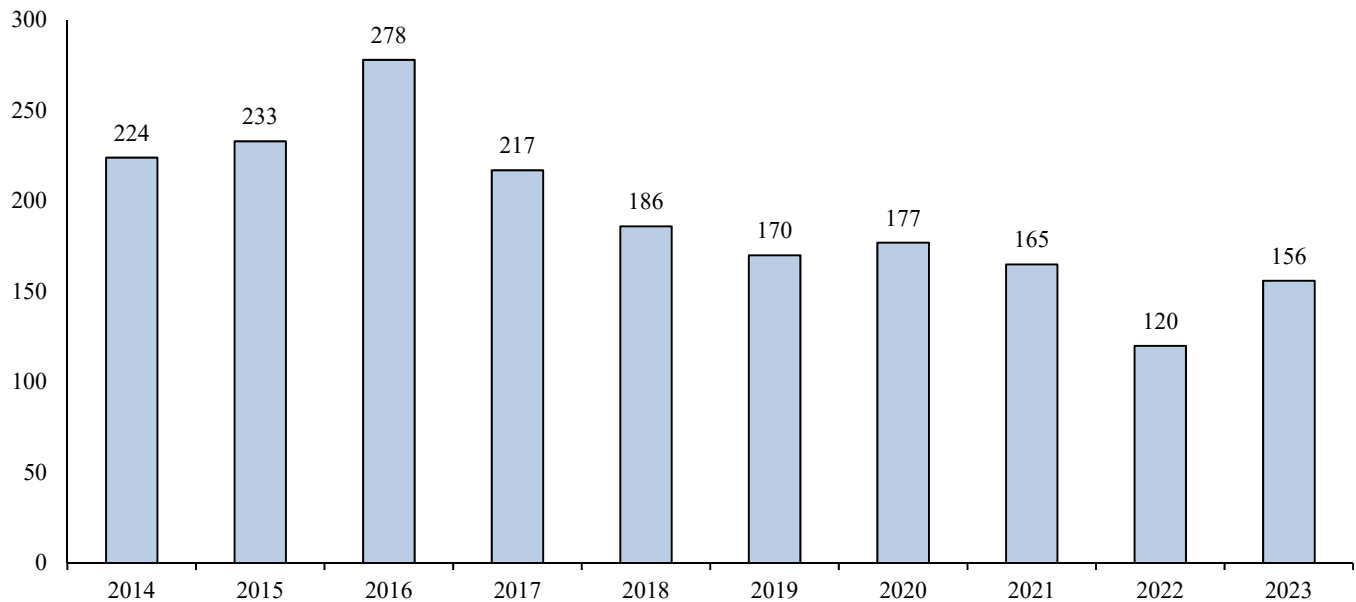
First-Time Freshman	2019	2020	2021	2022	2023	5 Yr # Ch	5 Yr %Ch
Inquiries	6,316	4,736	6,380	2,295	2,558	-3,758	-59%
Conversion ratio from inquiry to application	8%	11%	7%	20%	22%		
Applicants	535	516	422	450	553	18	3%
Admit Rate from application to admission	97%	99%	99%	99%	100%		
Admitted	517	511	419	446	553	36	7%
Yield rate from admission to enrollment	34%	37%	41%	28%	29%		
Of those Enrolled							
First-time, Full-time Bachelor's Degree Seeking	170	177	165	120	156	-14	-8%
First-time, Part-time Bachelor's Degree Seeking	5	11	3	3	2	-3	-60%
First-time, Full-time Other Degree Seeking	0	1	2	1	1	1	-
First-time, Part-time Other Degree Seeking	0	1	1	1	0	0	-
Total Enrolled Degree Seeking Freshmen	175	190	171	125	159	-16	-9%

Cohorts are defined using fall enrollment archived on the official census date.

Cohort totals include the students excluded from retention.

Starting fall 2014, the definition of an applicant was changed to match IHL and IPEDS.

First-time, Full-time Bachelor's Degree Seeking Freshman Headcount | Table 1.2
Fall 2014 - 2023



The freshman cohort totals include the students excluded from retention.

First-Time Transfer: Enrollment & Funnel Rates | Table 1.3
Fall 2019 - 2023

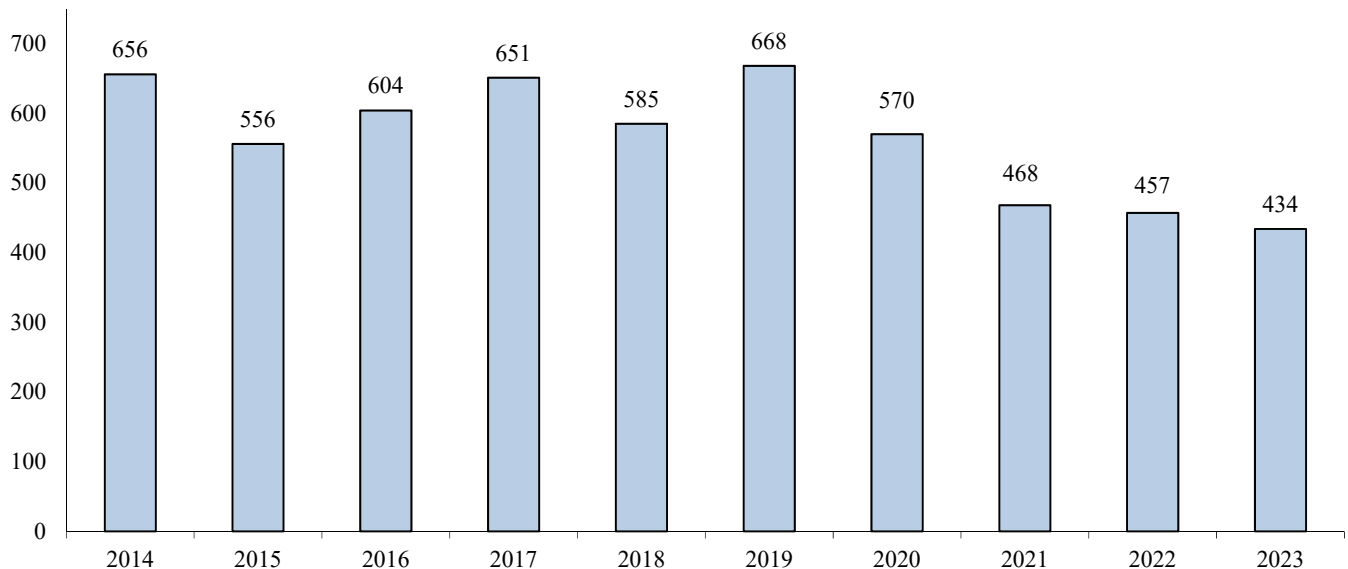
First-Time Transfer	2019	2020	2021	2022	2023	5 Yr # Ch	5 Yr %Ch
Inquiries	3,077	1,090	1,096	1,438	736	-2341	-76%
Conversion ratio from inquiry to application	40%	65%	86%	66%	117%		
Applicants	1,244	710	946	945	862	-382	-31%
Admit Rate from application to admission	98%	96%	100%	98%	96%		
Admitted	1,217	682	942	924	830	-387	-32%
Yield rate from admission to enrollment	61%	97%	57%	56%	59%		
Of those Enrolled							
First-time, Full-time Bachelor's Degree Seeking	668	570	468	457	434	-234	-35%
First-time, Part-time Bachelor's Degree Seeking	35	47	34	30	24	-11	-31%
First-time, Full-time Other Degree Seeking	36	33	31	25	32	-4	-11%
First-time, Part-time Other Degree Seeking	2	10	7	3	3	1	50%
Total Enrolled Degree Seeking Transfers	741	660	540	515	493	-248	-33%

Cohorts are defined using fall enrollment archived on the official census date.

Cohort totals include the students excluded from retention.

Starting fall 2014, the definition of an applicant was changed to match IHL and IPEDS.

First-time, Full-time Bachelor's Degree Seeking Transfer Headcount | Table 1.4
Fall 2014 - 2023



The transfer cohort totals include the students excluded from retention.

Due to a change in IPEDS reporting, the transfer cohorts from fall 2007-2014 have been redefined to include new transfers from the preceding summer. For fall 2015 forward, the transfer cohort will include summer transfers.

First-time, Undergraduate Degree Seeking Student ACT & SAT Scores | Table 1.5

Fall 2019 - 2023

Fall 2019 ACT	Comp	Math	English	Reading	Science
25th percentile	18	16	17	19	18
50th percentile	20	18	20	22	20
75th percentile	25	23	24	25	24
Average	21.1	19.4	21.0	22.6	20.7
Minimum	14	13	9	9	12
Maximum	31	30	36	34	31

Fall 2019 ACT & SAT	ACT & Conv SAT Comp¹	Conv SAT Comp	SAT VERB	SAT MATH
25th percentile	18	21	470	490
50th percentile	21	21	570	570
75th percentile	25	24	610	590
Average	21.1	22.0	550.0	550.0
Minimum	14	21	470	490
Maximum	31	24	610	590

Fall 2020 ACT	Comp	Math	English	Reading	Science
25th percentile	19	17	18	18	19
50th percentile	21	19	22	22	21
75th percentile	24	23	24	25	24
Average	21.4	19.9	21.4	22.1	21.3
Minimum	12	11	10	10	10
Maximum	32	31	35	36	32

Fall 2020 ACT & SAT	ACT & Conv SAT Comp¹	Conv SAT Comp	SAT VERB	SAT MATH
25th percentile	19	19	510	480
50th percentile	21	22	590	510
75th percentile	24	28	610	690
Average	21.5	25.5	625.0	595.0
Minimum	12	19	510	480
Maximum	33	33	790	700

Fall 2021 ACT	Comp	Math	English	Reading	Science
25th percentile	18	16	16	18	17
50th percentile	20	18	20	21	20
75th percentile	24	23	24	26	23
Average	20.7	19.2	20.6	21.9	20.4
Minimum	11	12	6	10	10
Maximum	33	31	36	35	33

Fall 2021 ACT & SAT	ACT & Conv SAT Comp¹	Conv SAT Comp	SAT VERB	SAT MATH
25th percentile	18	16	440	410
50th percentile	20	18	530	450
75th percentile	24	24	610	570
Average	20.7	19.8	533.3	485.0
Minimum	11	14	410	370
Maximum	33	25	640	620

Fall 2022 ACT	Comp	Math	English	Reading	Science
25th percentile	17	16	16	17	18
50th percentile	20	18	20	21	20
75th percentile	23	20	24	24	23
Average	20.4	18.5	20.2	21.5	20.6
Minimum	12	9	10	11	10
Maximum	33	28	35	36	33

Fall 2022 ACT & SAT	ACT & Conv SAT Comp¹	Conv SAT Comp	SAT VERB	SAT MATH
25th percentile	17	19	480	470
50th percentile	20	20	570	520
75th percentile	23	29	680	670
Average	20.5	22.7	576.7	553.3
Minimum	12	19	480	470
Maximum	33	29	680	670

Fall 2023 ACT	Comp	Math	English	Reading	Science
25th percentile	18	16	17	18	18
50th percentile	20	18	20	21	20
75th percentile	23	22	23	25	23
Average	20.7	19.4	20.1	21.9	20.5
Minimum	12	13	10	11	10
Maximum	33	32	35	36	36

Fall 2023 ACT & SAT	ACT & Conv SAT Comp¹	Conv SAT Comp	SAT VERB	SAT MATH
25th percentile	18	15	400	440
50th percentile	20	15	410	440
75th percentile	23	20	520	510
Average	20.6	17.8	477.5	477.5
Minimum	12	15	400	440
Maximum	33	21	580	520

¹Includes both the ACT Composite Score and Converted SAT to ACT Composite Score.

This table now includes all first-time college students, both full-time and part-time, as well as bachelor's and associate's degree seeking.

First-time, Full-time Bachelor's Degree Seeking Freshman Cohort Retention & Graduation Rates | Table 1.6

Fall 2015 Cohort	Fall 2015	Fall 2016		Fall 2017		Fall 2018		Fall 2019		Fall 2020		Fall 2021		Fall 2022		Fall 2023	
Enrolled	233	138	59.2%	123	52.8%	118	50.6%	36	15.5%	10	4.3%	1	0.4%	5	2.1%	4	1.7%
Graduated		0	0.0%	0	0.0%	0	0.0%	73	31.3%	95	40.8%	104	44.6%	105	45.1%	106	45.5%
Total	233	138	59.2%	123	52.8%	118	50.6%	109	46.8%	105	45.1%	105	45.1%	110	47.2%	110	47.2%
Fall 2016 Cohort	Fall 2016	Fall 2017		Fall 2018		Fall 2019		Fall 2020		Fall 2021		Fall 2022		Fall 2023		Fall 2024	
Enrolled	278	165	59.4%	133	47.8%	114	41.0%	34	12.2%	10	3.6%	4	1.4%	3	1.1%		
Graduated		0	0.0%	0	0.0%	7	2.5%	80	28.8%	100	36.0%	104	37.4%	106	38.1%		
Total	278	165	59.4%	133	47.8%	121	43.5%	114	41.0%	110	39.6%	108	38.8%	109	39.2%		
Fall 2017 Cohort	Fall 2017	Fall 2018		Fall 2019		Fall 2020		Fall 2021		Fall 2022		Fall 2023		Fall 2024		Fall 2025	
Enrolled	217	136	62.7%	110	50.7%	94	43.3%	32	14.7%	13	6.0%	5	2.3%				
Graduated		0	0.0%	1	0.5%	5	2.3%	53	24.4%	75	34.6%	81	37.3%				
Total	217	136	62.7%	111	51.2%	99	45.6%	85	39.2%	88	40.6%	86	39.6%				
Fall 2018 Cohort	Fall 2018	Fall 2019		Fall 2020		Fall 2021		Fall 2022		Fall 2023		Fall 2024		Fall 2025		Fall 2026	
Enrolled	186	140	75.3%	110	59.1%	89	47.8%	31	16.7%	9	4.8%						
Graduated		0	0.0%	1	0.5%	7	3.8%	61	32.8%	79	42.5%						
Total	186	140	75.3%	111	59.7%	96	51.6%	92	49.5%	88	47.3%						
Fall 2019 Cohort	Fall 2019	Fall 2020		Fall 2021		Fall 2022		Fall 2023		Fall 2024		Fall 2025		Fall 2026		Fall 2027	
Enrolled	170	134	78.8%	104	61.2%	79	46.5%	32	18.8%								
Graduated		0	0.0%	1	0.6%	12	7.1%	57	33.5%								
Total	170	134	78.8%	105	61.8%	91	53.5%	89	52.4%								
Fall 2020 Cohort	Fall 2020	Fall 2021		Fall 2022		Fall 2023		Fall 2024		Fall 2025		Fall 2026		Fall 2027		Fall 2028	
Enrolled	177	133	75.1%	112	63.3%	88	49.7%										
Graduated		0	0.0%	0	0.0%	11	6.2%										
Total	177	133	75.1%	112	63.3%	99	55.9%										
Fall 2021 Cohort	Fall 2021	Fall 2022		Fall 2023		Fall 2024		Fall 2025		Fall 2026		Fall 2027		Fall 2028		Fall 2029	
Enrolled	165	121	73.3%	100	60.6%												
Graduated		0	0.0%	4	2.4%												
Total	165	121	73.3%	104	63.0%												
Fall 2022 Cohort	Fall 2022	Fall 2023		Fall 2024		Fall 2025		Fall 2026		Fall 2027		Fall 2028		Fall 2029		Fall 2030	
Enrolled	120	86	71.7%														
Graduated		0	0.0%														
Total	120	86	71.7%														

Enrolled status is determined using fall enrollment archived on the official census date.

Students receiving more than one degree are only counted once. This table does not count ASN degrees as completers.

First-time, Full-time Bachelor's Degree Seeking Transfer Cohort Retention & Graduation Rates | Table 1.7

Fall 2015 Cohort	Fall 2015	Fall 2016		Fall 2017		Fall 2018		Fall 2019		Fall 2020		Fall 2021		Fall 2022		Fall 2023	
Enrolled	555	218	39.3%	97	17.5%	23	4.1%	12	2.2%	8	1.4%	3	0.5%	0	0.0%	0	0.0%
Graduated		222	40.0%	348	62.7%	412	74.2%	428	77.1%	436	78.6%	444	80.0%	447	80.5%	447	80.5%
Total	555	440	79.3%	445	80.2%	435	78.4%	440	79.3%	444	80.0%	447	80.5%	447	80.5%	447	80.5%

Fall 2016 Cohort	Fall 2016	Fall 2017		Fall 2018		Fall 2019		Fall 2020		Fall 2021		Fall 2022		Fall 2023		Fall 2024	
Enrolled	604	239	39.6%	109	18.0%	39	6.5%	17	2.8%	5	0.8%	3	0.5%	1	0.2%		
Graduated		249	41.2%	359	59.4%	436	72.2%	457	75.7%	470	77.8%	476	78.8%	477	79.0%		
Total	604	488	80.8%	468	77.5%	475	78.6%	474	78.5%	475	78.6%	479	79.3%	478	79.1%		

Fall 2017 Cohort	Fall 2017	Fall 2018		Fall 2019		Fall 2020		Fall 2021		Fall 2022		Fall 2023		Fall 2024		Fall 2025	
Enrolled	651	302	46.4%	131	20.1%	37	5.7%	11	1.7%	6	0.9%	1	0.2%				
Graduated		223	34.3%	378	58.1%	463	71.1%	495	76.0%	505	77.6%	508	78.0%				
Total	651	525	80.6%	509	78.2%	500	76.8%	506	77.7%	511	78.5%	509	78.2%				

Fall 2018 Cohort	Fall 2018	Fall 2019		Fall 2020		Fall 2021		Fall 2022		Fall 2023		Fall 2024		Fall 2025		Fall 2026	
Enrolled	585	259	44.3%	104	17.8%	26	4.4%	6	1.0%	5	0.9%						
Graduated		225	38.5%	362	61.9%	434	74.2%	455	77.8%	460	78.6%						
Total	585	484	82.7%	466	79.7%	460	78.6%	461	78.8%	465	79.5%						

Fall 2019 Cohort	Fall 2019	Fall 2020		Fall 2021		Fall 2022		Fall 2023		Fall 2024		Fall 2025		Fall 2026		Fall 2027	
Enrolled	668	295	44.2%	131	19.6%	41	6.1%	10	1.5%								
Graduated		286	42.8%	430	64.4%	515	77.1%	541	81.0%								
Total	668	581	87.0%	561	84.0%	556	83.2%	551	82.5%								

Fall 2020 Cohort	Fall 2020	Fall 2021		Fall 2022		Fall 2023		Fall 2024		Fall 2025		Fall 2026		Fall 2027		Fall 2028	
Enrolled	570	222	38.9%	91	16.0%	25	4.4%										
Graduated		251	44.0%	372	65.3%	440	77.2%										
Total	570	473	83.0%	463	81.2%	465	81.6%										

Fall 2021 Cohort	Fall 2021	Fall 2022		Fall 2023		Fall 2024		Fall 2025		Fall 2026		Fall 2027		Fall 2028		Fall 2029	
Enrolled	466	204	43.8%	67	14.4%												
Graduated		204	43.8%	325	69.7%												
Total	466	408	87.6%	392	84.1%												

Fall 2022 Cohort	Fall 2022	Fall 2023		Fall 2024		Fall 2025		Fall 2026		Fall 2027		Fall 2028		Fall 2029		Fall 2030	
Enrolled	457	203	44.4%														
Graduated		182	39.8%														
Total	457	385	84.2%														

Due to a change in IPEDS reporting, the 2007 - 2014 transfer cohorts have been redefined to include new transfers from the preceding summer.

Enrolled status is determined using fall enrollment archived on the official census date.

Students receiving more than one degree are only counted once. This table does not count ASN degrees as completers.

The following first-time, full-time transfer cohorts have deceased students excluded from retention: 2015 - 1 student, 2021 - 2 students.

Unduplicated Headcount and FTE Enrollment: Fall Terms | Table 2.1
Fall 2014 - 2023

	Undup Headcount	% Ch Yr Ago	Total Cr. Hrs.	% Ch Yr Ago	Total FTE	% Ch Yr Ago
Fall 2014	2,696	-	34,131	-	2,300	-
Fall 2015	2,673	-0.85%	33,511	-1.82%	2,263	-1.61%
Fall 2016	2,956	10.59%	36,708	9.54%	2,479	9.54%
Fall 2017	2,789	-5.65%	35,575	-3.09%	2,403	-3.07%
Fall 2018	2,711	-2.80%	34,228	-3.79%	2,311	-3.82%
Fall 2019	2,811	3.69%	35,101	2.55%	2,373	2.66%
Fall 2020	2,704	-3.81%	33,377	-4.91%	2,265	-4.56%
Fall 2021	2,477	-8.39%	29,296	-12.23%	1,995	-11.92%
Fall 2022	2,339	-5.57%	27,859	-4.91%	1,892	-5.15%
Fall 2023	2,227	-4.79%	26,604	-4.50%	1,806	-4.55%

Source: Fall enrollment archived on the official census date.

Duplicated Campus Headcount | Table 2.2
Fall 2019 - 2023

	Main Campus Headcount	# Ch Yr Ago	% Ch Yr Ago	Tupelo Campus Headcount	# Ch Yr Ago	% Ch Yr Ago
Fall 2019	2,442	-	-	567	-	-
Fall 2020	2,400	-42	-1.72%	496	-71	-12.52%
Fall 2021	2,202	-198	-8.25%	410	-86	-17.34%
Fall 2022	2,086	-116	-5.27%	423	13	3.17%
Fall 2023	2,004	-82	-3.93%	366	-57	-13.48%

Source: Fall enrollment archived on the official census date.

Students enrolled on Main campus may also be enrolled at the same time on Tupelo campus and vice versa.

Students enrolled in Italy, Hinds CC, and Gulf CC as well as off-campus dually enrolled students count as Main campus.

Since Spring 2020, Hinds CC and Gulf CC campuses will not have any students.

Unduplicated Headcount and FTE Enrollment: Spring Terms | Table 2.3
Spring 2015 - 2024

	Undup Headcount	% Ch Yr Ago	Total Cr. Hrs.	% Ch Yr Ago	Total FTE	% Ch Yr Ago
Spring 2015	2,558	-	31,908	-	2,151	-
Spring 2016	2,574	0.63%	31,922	0.04%	2,156	0.25%
Spring 2017	2,718	5.59%	33,326	4.40%	2,251	4.37%
Spring 2018	2,648	-2.58%	33,060	-0.80%	2,232	-0.82%
Spring 2019	2,595	-2.00%	32,766	-0.89%	2,212	-0.90%
Spring 2020	2,683	3.39%	33,225	1.40%	2,247	1.57%
Spring 2021	2,478	-7.64%	31,129	-6.31%	2,114	-5.90%
Spring 2022	2,362	-4.68%	28,232	-9.31%	1,924	-9.01%
Spring 2023	2,162	-8.47%	25,749	-8.79%	1,751	-8.99%
Spring 2024	2,128	-1.57%	25,381	-1.43%	1,726	-1.42%

Source: Spring enrollment archived on the official census date.

Note: Spring numbers will be updated after Spring 2024 enrollment is finalized.

Unduplicated Headcount and FTE Enrollment: Summer Terms | Table 2.4
Summer 2014 - 2023

	Undup Headcount	% Ch Yr Ago	Total Cr. Hrs.	% Ch Yr Ago	Total FTE	% Ch Yr Ago
Summer 2014	1,258	-	11,375	-	778	-
Summer 2015	1,268	0.79%	11,639	2.32%	795	2.19%
Summer 2016	1,177	-7.18%	10,593	-8.99%	729	-8.29%
Summer 2017	1,142	-2.97%	10,334	-2.45%	708	-2.85%
Summer 2018	1,036	-9.28%	9,557	-7.52%	654	-7.64%
Summer 2019	1,050	1.35%	9,710	1.60%	664	1.44%
Summer 2020	1,022	-2.67%	10,647	9.65%	731	10.17%
Summer 2021	1,079	5.58%	10,287	-3.38%	713	-2.50%
Summer 2022	1,074	-0.46%	9,772	-5.01%	675	-5.28%
Summer 2023	979	-8.85%	8,508	-12.93%	588	-12.93%

Source: Combined summer enrollment archived on the official census date for each summer term. Spring 2024 data will be added at the end of the semester.

Unduplicated Enrollment by Gender | Table 2.5

Fall 2014 - 2023

Fall	Female			Male			Total	
	#	% of Total	% Ch Yr Ago	#	% of Total	% Ch Yr Ago	#	% Ch Yr Ago
2014	2,192	81.3%	-	504	18.7%	-	2,696	-
2015	2,155	80.6%	-1.7%	518	19.4%	2.8%	2,673	-0.9%
2016	2,401	81.2%	11.4%	555	18.8%	7.1%	2,956	10.6%
2017	2,241	80.4%	-6.7%	548	19.6%	-1.3%	2,789	-5.6%
2018	2,167	79.9%	-3.3%	544	20.1%	-0.7%	2,711	-2.8%
2019	2,243	79.8%	3.5%	568	20.2%	4.4%	2,811	3.7%
2020	2,172	80.3%	-3.2%	532	19.7%	-6.3%	2,704	-3.8%
2021	1,971	79.6%	-9.3%	506	20.4%	-4.9%	2,477	-8.4%
2022	1,821	77.9%	-7.6%	518	22.1%	2.4%	2,339	-5.6%
2023	1,732	77.8%	-4.9%	495	22.2%	-4.4%	2,227	-4.8%

Unduplicated Enrollment by Race/Ethnicity | Table 2.6

Fall 2014 - 2023

Fall	White		Black/ African-American			Other		Did Not Report		Total		
	#	% of Total	% Ch Yr Ago	#	% of Total	% Ch Yr Ago	#	% of Total				
2014	1,573	58.4%	-	987	36.6%	-	136	5.0%	-	0	0.0%	2,696
2015	1,534	57.4%	-2.5%	965	36.1%	-2.2%	174	6.5%	27.9%	0	0.0%	2,673
2016	1,721	58.2%	12.2%	998	33.8%	3.4%	237	8.0%	36.2%	0	0.0%	2,956
2017	1,662	59.6%	-3.4%	960	34.4%	-3.8%	167	6.0%	-29.5%	0	0.0%	2,789
2018	1,606	59.2%	-3.4%	958	35.4%	-0.2%	147	5.4%	-12.0%	0	0.0%	2,711
2019	1,627	57.9%	1.3%	1,034	36.8%	7.9%	150	5.3%	2.0%	0	0.0%	2,811
2020	1,553	57.4%	-4.5%	1,008	37.3%	-2.5%	143	5.3%	-4.7%	0	0.0%	2,704
2021	1,460	58.9%	-6.0%	884	35.7%	-12.3%	133	5.4%	-7.0%	0	0.0%	2,477
2022	1,385	59.2%	-5.1%	821	35.1%	-7.1%	133	5.7%	0.0%	0	0.0%	2,339
2023	1,339	60.1%	-3.3%	741	33.3%	-9.7%	147	6.6%	10.5%	0	0.0%	2,227

Source: Fall enrollment archived on the official census date.

The "Other" category includes Hispanic/Latino, American Indian/Alaskan Native, Asian, Native Hawaiian/Pacific Islander, Multi-racial, and Non-resident Alien students.

Unduplicated Enrollment by Race/Ethnicity, Gender, & FT/PT Status | Table 2.7

Fall 2019 - 2023

Full-Time Status												
	Black/African American			Other			White			Full-Time Total		
	Female	Male	Total	Female	Male	Total	Female	Male	Total	Female	Male	Total
Fall 2019	738	115	853	70	22	92	988	238	1,226	1,796	375	2,171
Fall 2020	674	101	775	60	27	87	904	234	1,138	1,638	362	2,000
Fall 2021	596	94	690	50	18	68	835	209	1,044	1,481	321	1,802
Fall 2022	556	84	640	52	17	69	761	197	958	1,369	298	1,667
Fall 2023	504	74	578	51	21	72	749	202	951	1,304	297	1,601

Part-Time Status												
	Black/African American			Other			White			Part-Time Total		
	Female	Male	Total	Female	Male	Total	Female	Male	Total	Female	Male	Total
Fall 2019	152	29	181	31	27	58	264	137	401	447	193	640
Fall 2020	196	37	233	27	29	56	311	104	415	534	170	704
Fall 2021	164	30	194	35	30	65	291	125	416	490	185	675
Fall 2022	142	39	181	33	31	64	277	150	427	452	220	672
Fall 2023	121	42	163	42	33	75	265	123	388	428	198	626

University Total												
	Black/African American			Other			White			Grand Total		
	Female	Male	Total	Female	Male	Total	Female	Male	Total	Female	Male	Total
Fall 2019	890	144	1,034	101	49	150	1,252	375	1,627	2,243	568	2,811
Fall 2020	870	138	1,008	87	56	143	1,215	338	1,553	2,172	532	2,704
Fall 2021	760	124	884	85	48	133	1,126	334	1,460	1,971	506	2,477
Fall 2022	698	123	821	85	48	133	1,038	347	1,385	1,821	518	2,339
Fall 2023	625	116	741	93	54	147	1,014	325	1,339	1,732	495	2,227

Source: Fall enrollment archived on the official census date.

The "Other" category includes Hispanic/Latino, American Indian/Alaskan Native, Asian, Native Hawaiian/Pacific Islander, Multi-racial, and Non-resident Alien students.

Unduplicated Enrollment and Credit Hour Production by FT/PT Status | Table 2.8

Fall 2014 - 2023

Unduplicated Fall Enrollment

Fall	Full-time					Part-time					Total
	Undergraduate		Graduate		Full-Time Total	Undergraduate		Graduate		Part-Time Total	
	#	% of Total	#	% of Total		#	% of Total	#	% of Total		
2014	2,065	77%	84	3%	2,149	462	17%	85	3%	547	2,696
2015	1,976	74%	94	4%	2,070	494	18%	109	4%	603	2,673
2016	2,116	72%	126	4%	2,242	629	21%	85	3%	714	2,956
2017	2,113	76%	117	4%	2,230	464	17%	95	3%	559	2,789
2018	2,002	74%	107	4%	2,109	503	18%	99	4%	602	2,711
2019	2,026	72%	145	5%	2,171	568	20%	72	3%	640	2,811
2020	1,835	68%	165	6%	2,000	583	22%	121	4%	704	2,704
2021	1,627	66%	175	7%	1,802	551	22%	124	5%	675	2,477
2022	1,528	65%	139	6%	1,667	552	24%	120	5%	672	2,339
2023	1,460	66%	141	6%	1,601	535	24%	91	4%	626	2,227

Fall Credit Hours by Student Level

Fall	Full-time					Part-time					Total
	Undergraduate		Graduate		Full-Time Total	Undergraduate		Graduate		Part-Time Total	
	#	% of Total	#	% of Total		#	% of Total	#	% of Total		
2014	30,053	88%	1,002	3%	31,055	2,582	8%	494	1%	3,076	34,131
2015	29,129	87%	1,080	3%	30,209	2,644	8%	658	2%	3,302	33,511
2016	31,867	87%	1,420	4%	33,287	2,933	8%	488	1%	3,421	36,708
2017	31,461	88%	1,319	4%	32,780	2,241	6%	554	2%	2,795	35,575
2018	29,845	87%	1,206	4%	31,051	2,629	8%	548	1%	3,177	34,228
2019	30,296	86%	1,599	5%	31,895	2,848	8%	358	1%	3,206	35,101
2020	27,533	83%	1,763	5%	29,296	3,478	10%	603	2%	4,081	33,377
2021	24,110	82%	1,864	7%	25,974	2,687	9%	635	2%	3,322	29,296
2022	22,878	82%	1,464	5%	24,342	2,914	11%	603	2%	3,517	27,859
2023	21,767	82%	1,486	5%	23,253	2,868	11%	483	2%	3,351	26,604

Source: Fall enrollment archived on the official census date.

Part-time is defined as UG enrolled 11 Cr. Hrs or less or GR enrolled 8 Cr. Hrs or less.

Full-time is defined as UG enrolled 12 Cr. Hrs or more or GR enrolled 9 Cr. Hrs or more.

Unduplicated Enrollment by Student Classification | Table 2.9

Fall 2014 - 2023 | Spring 2015 - 2024

	Fall 2014	Fall 2015	Fall 2016	Fall 2017	Fall 2018	Fall 2019	Fall 2020	Fall 2021	Fall 2022	Fall 2023
Undergraduate Total	2527	2470	2745	2577	2505	2594	2418	2178	2080	1995
Freshman	549	622	794	565	550	572	536	539	535	566
Sophomore	414	401	348	397	332	383	330	252	235	200
Junior	647	619	715	745	707	714	660	580	535	496
Senior	917	828	888	870	916	925	892	807	775	733
Graduate Total	169	203	211	212	206	217	286	299	259	232
Enrollment Total	2696	2673	2956	2789	2711	2811	2704	2477	2339	2227

Source: Fall enrollment archived on the official census date.

	Spring 2015	Spring 2016	Spring 2017	Spring 2018	Spring 2019	Spring 2020	Spring 2021	Spring 2022	Spring 2023	Spring 2024
Undergraduate Total	2367	2365	2511	2441	2385	2449	2191	2052	1895	1872
Freshman	463	491	616	485	467	519	415	482	457	500
Sophomore	227	276	243	224	221	221	178	172	136	130
Junior	466	466	479	571	508	491	425	362	349	348
Senior	1211	1132	1173	1161	1189	1218	1173	1036	953	894
Graduate Total	191	209	207	207	210	234	287	310	267	256
Enrollment Total	2558	2574	2718	2648	2595	2683	2478	2362	2162	2128

Source: Spring enrollment archived on the official census date. Spring 2024 data will be added at the end of the semester.

Unduplicated Enrollment by Credit Hours & Student Classification | Table 2.10
Fall 2023

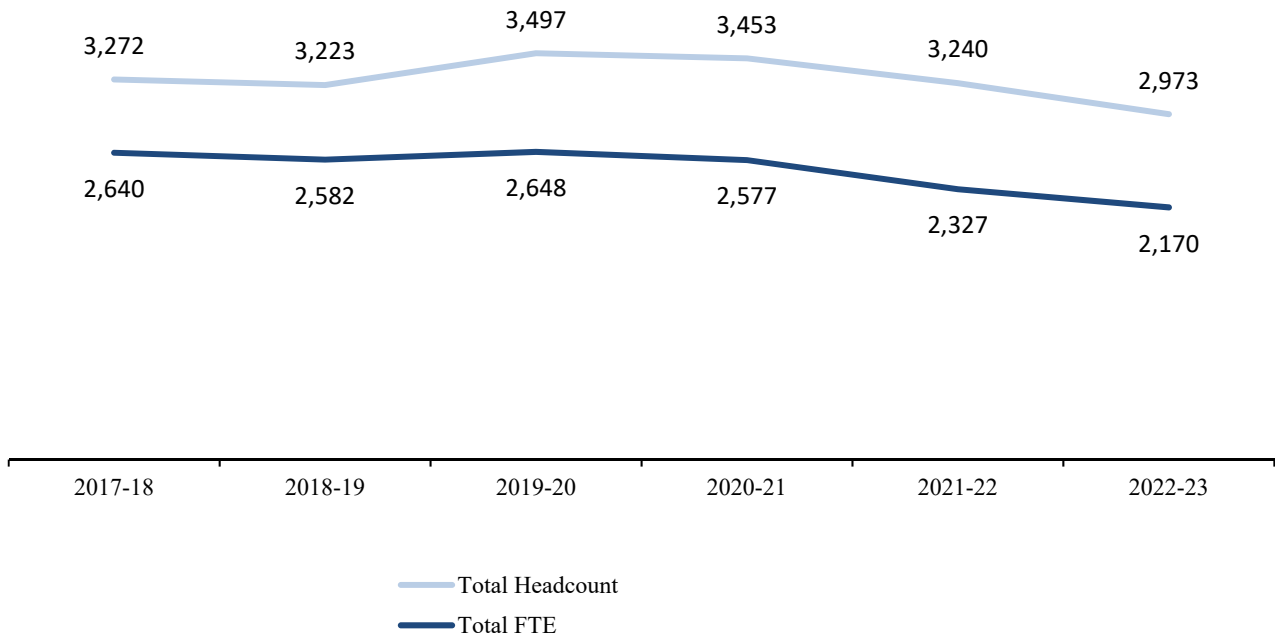
Sem. Hours	Freshman		Sophomore		Junior		Senior		Graduate		Grand Total	
	HC	FTE	HC	FTE	HC	FTE	HC	FTE	HC	FTE	HC	FTE
1	24	1.6	0	0.0	2	0.1	9	0.6	0	0.0	35	2.3
2	2	0.3	1	0.1	1	0.1	3	0.4	0	0.0	7	0.9
3	121	24.2	2	0.4	8	1.6	20	4.0	22	5.5	173	35.7
4	55	14.7	0	0.0	2	0.5	5	1.3	1	0.3	63	16.9
5	6	2.0	0	0.0	0	0.0	1	0.3	0	0.0	7	2.3
6	74	29.6	3	1.2	6	2.4	27	10.8	64	32.0	174	76.0
7	40	18.7	1	0.5	3	1.4	4	1.9	3	1.8	51	24.2
8	23	12.3	0	0.0	2	1.1	2	1.1	1	0.7	28	15.1
9	2	1.2	5	3.0	13	7.8	20	12.0	74	55.5	114	79.5
10	4	2.7	0	0.0	2	1.3	11	7.3	2	1.7	19	13.0
11	22	16.1	2	1.5	2	1.5	5	3.7	5	4.6	36	27.3
12	18	14.4	27	21.6	91	72.8	132	105.6	35	35.0	303	249.4
13	15	13.0	20	17.3	45	39.0	54	46.8	25	27.1	159	143.2
14	13	12.1	6	5.6	14	13.1	8	7.5	0	0.0	41	38.3
15	58	58.0	64	64.0	188	188.0	199	199.0	0	0.0	509	509.0
16	47	50.1	33	35.2	56	59.7	115	122.7	0	0.0	251	267.7
17	36	40.8	14	15.9	14	15.9	21	23.8	0	0.0	85	96.3
18	6	7.2	17	20.4	41	49.2	71	85.2	0	0.0	135	162.0
19	0	0.0	5	6.3	5	6.3	23	29.1	0	0.0	33	41.8
20	0	0.0	0	0.0	0	0.0	2	2.7	0	0.0	2	2.7
21	0	0.0	0	0.0	1	1.4	1	1.4	0	0.0	2	2.8
22	0	0.0	0	0.0	0	0.0	0	0.0	0	0.0	0	0.0
23	0	0.0	0	0.0	0	0.0	0	0.0	0	0.0	0	0.0
24	0	0.0	0	0.0	0	0.0	0	0.0	0	0.0	0	0.0
25	0	0.0	0	0.0	0	0.0	0	0.0	0	0.0	0	0.0
Grand Total	566	318.9	200	193.0	496	463.3	733	667.1	232	164.1	2227	1806.4

Source: Fall enrollment archived on the official census date.

12-Month Headcount and FTE Enrollment | Table 2.11
2018 - 2023

	2017-18	2018-19	2019-20	2020-21	2021-22	2022-23	2018 - 2023	
							# Ch	% Ch
Undergraduate Headcount	3,020	2,959	3,194	3,083	2,834	2,610	-410	-14%
Undergraduate FTE	2,447	2,398	2,446	2,325	2,050	1,926	-521	-21%
Graduate Headcount	252	264	303	370	406	363	111	44%
Graduate FTE	193	184	202	252	277	244	51	26%
Total Headcount	3,272	3,223	3,497	3,453	3,240	2,973	-299	-9%
Total FTE	2,640	2,582	2,648	2,577	2,327	2,170	-470	-18%

Total Headcount vs Total FTE



Source: IPEDS 12-month Enrollment survey

*Methodology was updated in 2019-20 due to IPEDS requirement that the Outcome Measures Survey balance with the 12-Month Enrollment Survey.

Unduplicated Enrollment by Age Distribution and Student Classification | Table 2.12
Fall 2023 vs Fall 2022

Age Group	Freshman		Sophomore		Junior		Senior		Graduate		Total	
	FA 23	FA 22	FA 23	FA 22	FA 23	FA 22	FA 23	FA 22	FA 23	FA 22	FA 23	FA 22
Under 18	302	272	1	0	0	0	0	0	0	0	303	272
18 and 19	203	204	60	68	27	34	5	9	0	0	295	315
20 and 21	46	47	80	93	243	264	205	201	3	4	577	609
22 to 24	3	6	27	23	102	101	260	307	80	84	472	521
25 to 29	3	0	13	12	47	56	111	104	35	47	209	219
30 to 34	0	1	11	14	34	29	43	52	28	40	116	136
35 to 39	1	2	4	14	19	25	36	31	25	19	85	91
40 to 49	3	2	4	8	16	17	41	39	39	41	103	107
50 to 64	2	1	0	3	8	9	22	26	19	21	51	60
65 and Over	3	0	0	0	0	0	10	6	3	3	16	9
Total	566	535	200	235	496	535	733	775	232	259	2227	2339

	Fall 2015	Fall 2016	Fall 2017	Fall 2018	Fall 2019	Fall 2020	Fall 2021	Fall 2022	Fall 2023
Average Age	25.2	24.5	24.7	24.6	24.5	24.5	24.6	24.3	24.2
Average Age Men	23.7	22.5	22.9	22.8	22.8	22.9	23.0	22.4	22.2
Average Age Women	25.6	25.0	25.1	25.1	25.0	24.9	25.0	24.8	24.8

Source: Fall enrollment archived on the official census date.

Unduplicated Enrollment by Non-traditional and Traditional Students | Table 2.13
Fall 2014 - 2023

Fall	Non-traditional						Traditional						Total
	Full-Time		Part-Time		Non-Trad. Total		Full-Time		Part-Time		Trad. Total		
	#	% of Total	#	% of Total	#	% of Total	#	% of Total	#	% of Total	#	% of Total	
2014	754	28.0%	255	9.5%	1,009	37.5%	1,395	51.7%	292	10.8%	1,687	62.5%	2,696
2015	642	24.0%	259	9.7%	901	33.7%	1,428	53.4%	344	12.9%	1,772	66.3%	2,673
2016	683	23.1%	250	8.5%	933	31.6%	1,559	52.7%	464	15.7%	2,023	68.4%	2,956
2017	600	21.5%	245	8.8%	845	30.3%	1,630	58.4%	314	11.3%	1,944	69.7%	2,789
2018	569	21.0%	221	8.2%	790	29.2%	1,540	56.8%	381	14.0%	1,921	70.8%	2,711
2019	592	21.0%	202	7.2%	794	28.2%	1,579	56.2%	438	15.6%	2,017	71.8%	2,811
2020	539	19.9%	241	8.9%	780	28.8%	1,461	54.1%	463	17.1%	1,924	71.2%	2,704
2021	471	19.0%	224	9.1%	695	28.1%	1,331	53.7%	451	18.2%	1,782	71.9%	2,477
2022	417	17.8%	205	8.8%	622	26.6%	1,250	53.4%	467	20.0%	1,717	73.4%	2,339
2023	396	17.8%	184	8.3%	580	26.1%	1,205	54.1%	442	19.8%	1,647	73.9%	2,227

Source: Fall enrollment archived on the official census date.

Non-traditional Students are defined as those who are at least 25 years of age.

Part-time is defined as UG enrolled 11 Cr. Hrs or less or GR enrolled 8 Cr. Hrs or less.

Full-time is defined as UG enrolled 12 Cr. Hrs or more or GR enrolled 9 Cr. Hrs or more.

Residence Hall Student Enrollment | Table 2.14
Fall 2014 - 2023

Residence Hall	Fall 2014	Fall 2015	Fall 2016	Fall 2017	Fall 2018	Fall 2019	Fall 2020	Fall 2021	Fall 2022	Fall 2023
Callaway	110	110	113	118	108	107	65	96	86	87
Columbus	50	43	45	44	48	46	32	37	35	33
Frazier	0	0	0	0	0	0	0	0	0	0
Goen	0	0	0	0	0	0	0	0	0	0
Grossnickle	44	45	44	42	43	40	0	40	40	40
Hastings-Simmons	48	42	42	44	41	39	31	43	34	35
Jones	136	129	148	155	132	123	96	74	99	123
Kincannon	182	168	159	166	174	138	95	110	87	107
Total	570	537	551	569	546	493	319	400	381	425

Residence Hall Enrollment by Ethnicity and Gender
Fall 2023

Residence Hall	Black	Other	White	Total
Callaway	43	2	42	87
Columbus	14	3	16	33
Grossnickle	7	3	30	40
Hastings-Simmons	24	1	10	35
Jones	81	8	34	123
Kincannon	57	7	43	107
Total	226	24	175	425

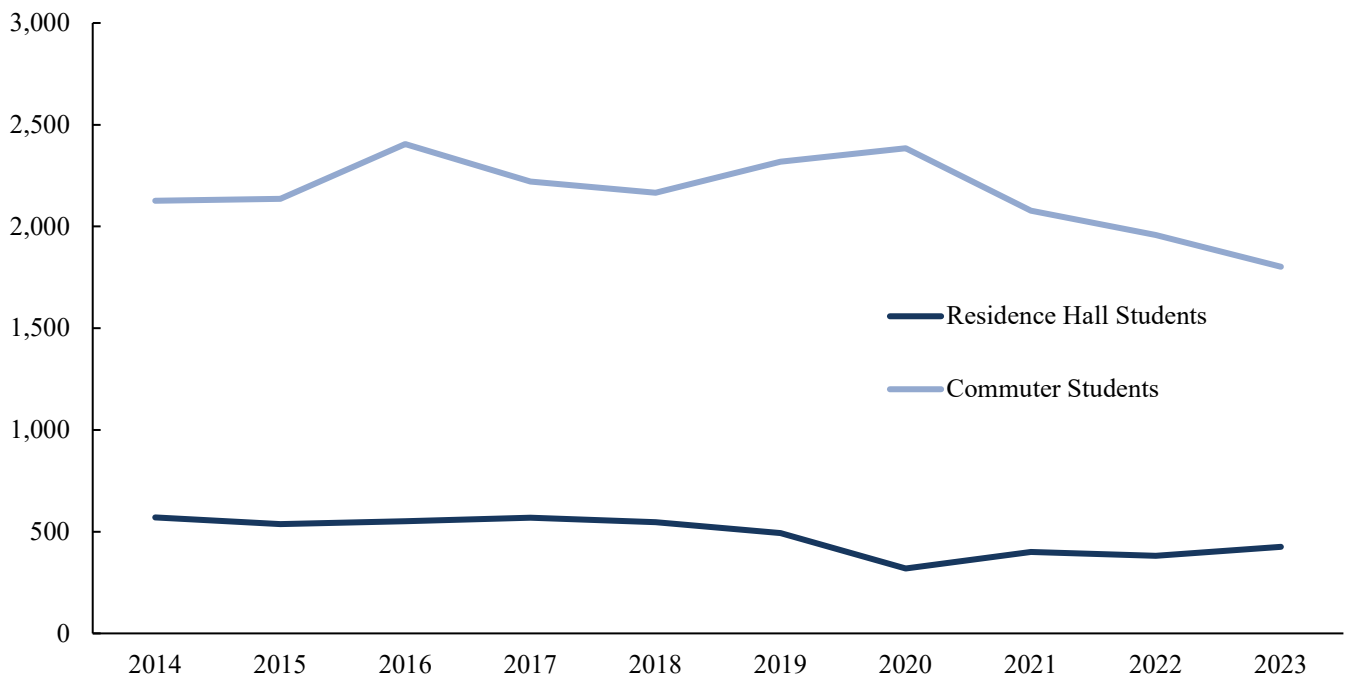
Residence Hall	Men	Women	Total
Callaway	0	87	87
Columbus	33	0	33
Grossnickle	9	31	40
Hastings-Simmons	0	35	35
Jones	0	123	123
Kincannon	46	61	107
Total	88	337	425

Source: Fall enrollment archived on the official census date.

The "Other" category includes Hispanic/Latino, American Indian/Alaskan Native, Asian, Native Hawaiian/Pacific Islander, Multi-racial, and Non-resident Alien students.

Unduplicated Enrollment by Residence Hall and Commuter Students | Table 2.15
Fall 2014 - 2023

Fall	Residence Hall Students			Commuter Students			Total
	#	% of Total	% Ch Yr Ago	#	% of Total	% Ch Yr Ago	
2014	570	21.1%	-	2,126	78.9%	-	2,696
2015	537	20.1%	-5.79%	2,136	79.9%	0.47%	2,673
2016	551	18.6%	2.61%	2,405	81.4%	12.59%	2,956
2017	569	20.4%	3.27%	2,220	79.6%	-7.69%	2,789
2018	546	20.1%	-4.04%	2,165	79.9%	-2.48%	2,711
2019	493	17.5%	-9.71%	2,318	82.5%	7.07%	2,811
2020	319	11.8%	-35.29%	2,385	88.2%	2.89%	2,704
2021	400	16.1%	25.39%	2,077	83.9%	-12.91%	2,477
2022	381	16.3%	-4.75%	1,958	83.7%	-5.73%	2,339
2023	425	19.1%	11.55%	1,802	80.9%	-7.97%	2,227

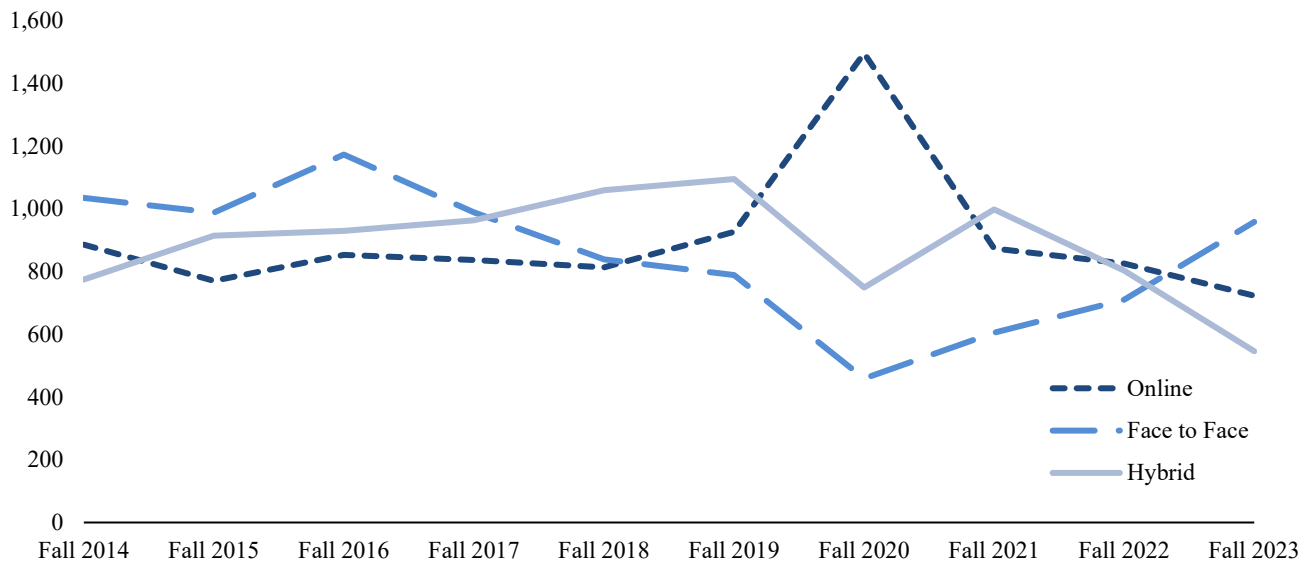


Source: Fall enrollment archived on the official census date.

Unduplicated Enrollment by Course Method | Table 2.16

Fall 2014 - 2023

	Online			Face-to-Face			Hybrid			Total
	#	% of Total	% Ch Yr Ago	#	% of Total	% Ch Yr Ago	#	% of Total	% Ch Yr Ago	
Fall 2014	886	32.9%		1,035	38.4%		775	28.7%		2,696
Fall 2015	771	28.8%	-13.0%	988	37.0%	-4.5%	914	34.2%	17.9%	2,673
Fall 2016	853	28.9%	10.6%	1,173	39.7%	18.7%	930	31.4%	1.8%	2,956
Fall 2017	837	30.0%	-1.9%	989	35.5%	-15.7%	963	34.5%	3.5%	2,789
Fall 2018	813	30.0%	-2.9%	839	30.9%	-15.2%	1059	39.1%	10.0%	2,711
Fall 2019	927	33.0%	14.0%	789	28.1%	-6.0%	1095	38.9%	3.4%	2,811
Fall 2020	1,496	55.3%	61.4%	459	17.0%	-41.8%	749	27.7%	-31.6%	2,704
Fall 2021	874	35.3%	-41.6%	605	24.4%	31.8%	998	40.3%	33.2%	2,477
Fall 2022	826	35.3%	-5.5%	710	30.4%	17.4%	803	34.3%	-19.5%	2,339
Fall 2023	723	32.5%	-12.5%	958	43.0%	34.9%	546	24.5%	-32.0%	2,227



Source: Fall enrollment archived on the official census date.

An online student is enrolled in only online courses.

A face-to-face student is enrolled in only face-to-face courses.

A hybrid student is enrolled in both online and face-to-face courses.

Due to Covid 19, many Fall 2020 classes moved online resulting in an increase in online credit hours.

Unduplicated Enrollment by State of Residence | Table 2.17

Fall 2019 - 2023

State	Fall 2019	Fall 2020	Fall 2021	Fall 2022	Fall 2023	5 Yr # Ch
Alabama	203	196	162	146	121	-82
Alaska	0	0	0	0	1	1
Arizona	1	3	0	0	2	1
Arkansas	8	6	6	7	7	-1
California	4	8	10	10	6	2
Colorado	0	1	2	1	3	3
Connecticut	2	2	0	1	1	-1
Delaware	1	1	0	0	1	0
District of Columbia	0	0	0	0	0	0
Florida	7	14	10	13	11	4
Georgia	7	12	10	3	7	0
Hawaii	0	1	0	0	0	0
Idaho	0	0	0	0	0	0
Illinois	4	4	3	4	4	0
Indiana	3	3	6	3	3	0
Iowa	0	1	1	0	0	0
Kansas	0	0	2	2	2	2
Kentucky	0	1	1	1	0	0
Louisiana	20	16	17	11	21	1
Maine	1	0	1	1	2	1
Maryland	4	2	2	2	2	-2
Massachusetts	1	0	0	0	0	-1
Michigan	2	2	1	3	3	1
Minnesota	0	1	0	0	1	1
Mississippi	2419	2331	2131	2024	1920	-499
Missouri	2	5	7	8	6	4
Montana	0	0	0	0	0	0
Nebraska	0	1	2	1	1	1
Nevada	1	0	1	1	2	1
New Hampshire	0	0	0	1	0	0

Unduplicated Enrollment by State of Residence | Table 2.17
Fall 2019 - 2023

State	Fall 2019	Fall 2020	Fall 2021	Fall 2022	Fall 2023	5 Yr # Ch
New Jersey	4	3	3	4	7	3
New Mexico	2	1	1	1	1	-1
New York	1	2	1	1	2	1
North Carolina	3	3	4	3	4	1
North Dakota	0	0	0	0	0	0
Ohio	0	1	1	1	2	2
Oklahoma	2	0	0	0	1	-1
Oregon	0	0	0	2	1	1
Pennsylvania	0	1	4	5	4	4
Rhode Island	0	0	0	0	0	0
South Carolina	5	5	5	2	0	-5
South Dakota	1	0	0	0	0	-1
Tennessee	36	31	37	33	28	-8
Texas	14	10	13	16	17	3
U. S. Citizen Residing Outside U. S.	0	0	0	0	0	0
Utah	0	0	2	1	0	0
Vermont	0	0	0	0	1	1
Virgin Islands of the United States	0	0	0	0	0	0
Virginia	4	4	3	6	5	1
Washington	0	2	1	1	1	1
West Virginia	0	0	0	1	1	1
Wisconsin	0	0	0	0	1	1
Wyoming	0	0	0	0	0	0
Total U.S. Enrollment	2762	2674	2450	2320	2203	-559

Source: Fall enrollment archived on the official census date.

Unduplicated Enrollment by Country | Table 2.18
Fall 2019 - 2023

Country	Fall 2019	Fall 2020	Fall 2021	Fall 2022	Fall 2023	5 Yr # Ch
Brazil	0	4	6	4	0	0
Bosnia-Herzegovina	0	0	0	0	1	1
Canada	0	0	0	2	2	2
Chile	2	1	0	0	0	-2
China	0	1	1	1	2	2
Croatia	1	0	0	0	0	-1
Dominican Republic	0	0	0	0	1	1
Egypt	1	0	1	0	0	-1
France	0	0	0	1	0	0
Germany	2	1	1	0	0	-2
India	1	0	0	0	0	-1
Italy	1	1	1	0	0	-1
Japan	1	0	0	0	0	-1
Kenya	1	1	0	0	0	-1
Korea, South	1	0	0	0	0	-1
Macedonia	1	0	0	0	0	-1
Malaysia	0	0	0	0	1	1
Mexico	5	5	2	0	0	-5
Nepal	27	10	5	3	4	-23
Netherlands Antilles	1	0	0	0	0	-1
Nigeria	1	1	3	4	3	2
Peru	0	0	1	0	0	0
Romania	1	0	0	0	1	0
Saudi Arabia	0	0	0	0	1	1
Serbia	1	1	1	1	0	-1
Spain	0	0	0	0	1	1
Turkey	0	0	0	0	1	1
United Arab Emirates	0	0	1	0	0	0
United Kingdom	1	4	4	2	5	4
Zimbabwe (Rhodesia)	0	0	0	1	1	1
Total Foreign Students	49	30	27	19	24	
Countries Represented	17	11	12	9	13	

Source: Fall enrollment archived on the official census date.

Unduplicated Enrollment by MS County | Table 2.19
Fall 2019 - 2023

County	Fall 2019	Fall 2020	Fall 2021	Fall 2022	Fall 2023	5 Yr # Ch
Adams	7	9	8	6	6	-1
Alcorn	21	22	21	20	29	8
Amite	1	3	2	2	0	-1
Attala	30	20	19	18	17	-13
Benton	4	5	3	3	2	-2
Bolivar	38	22	28	29	28	-10
Calhoun	19	12	12	15	18	-1
Carroll	4	3	3	7	7	3
Chickasaw	45	38	34	28	26	-19
Choctaw	13	13	11	16	15	2
Claiborne	2	2	2	1	1	-1
Clarke	11	9	8	8	6	-5
Clay	81	83	78	61	67	-14
Coahoma	13	6	7	6	6	-7
Copiah	10	11	15	12	16	6
Covington	2	2	1	3	4	2
DeSoto	78	71	71	77	84	6
Forrest	18	31	21	15	12	-6
Franklin	5	9	7	3	3	-2
George	9	5	4	3	4	-5
Greene	0	2	3	3	4	4
Grenada	23	15	8	12	11	-12
Hancock	2	5	6	7	9	7
Harrison	38	40	50	52	43	5
Hinds	74	84	72	63	50	-24
Holmes	12	16	11	12	12	0
Humphreys	3	7	7	3	3	0
Issaquena	1	1	1	1	1	0
Itawamba	24	28	23	16	15	-9
Jackson	31	32	25	26	29	-2

Unduplicated Enrollment by MS County | Table 2.19
Fall 2019 - 2023

County	Fall 2019	Fall 2020	Fall 2021	Fall 2022	Fall 2023	5 Yr # Ch
Jasper	7	5	5	6	9	2
Jefferson	0	0	2	2	0	0
Jefferson Davis	3	3	2	3	1	-2
Jones	7	17	13	12	11	4
Kemper	16	17	10	11	8	-8
Lafayette	22	22	28	17	22	0
Lamar	16	9	7	8	5	-11
Lauderdale	66	61	52	53	44	-22
Lawrence	8	9	5	7	4	-4
Leake	9	12	14	12	14	5
Lee	128	105	97	78	79	-49
Leflore	31	35	28	31	26	-5
Lincoln	24	23	21	19	22	-2
Lowndes	575	532	476	450	413	-162
Madison	50	53	61	53	52	2
Marion	1	2	1	2	0	-1
Marshall	20	16	22	17	9	-11
Monroe	116	118	81	76	91	-25
Montgomery	13	19	13	12	14	1
Neshoba	29	37	27	31	29	0
Newton	21	21	11	18	12	-9
Noxubee	35	32	29	25	27	-8
Oktibbeha	179	183	185	173	175	-4
Panola	13	23	16	18	21	8
Pearl River	13	16	13	10	7	-6
Perry	4	1	1	2	1	-3
Pike	4	8	5	8	10	6
Pontotoc	22	24	30	33	27	5
Prentiss	14	11	10	14	13	-1
Quitman	2	5	0	3	1	-1

Unduplicated Enrollment by MS County | Table 2.19
Fall 2019 - 2023

County	Fall 2019	Fall 2020	Fall 2021	Fall 2022	Fall 2023	5 Yr # Ch
Rankin	85	62	58	58	51	-34
Scott	16	18	13	20	11	-5
Sharkey	2	2	2	4	2	0
Simpson	5	5	5	6	9	4
Smith	4	3	4	5	1	-3
Stone	5	0	3	5	4	-1
Sunflower	19	18	17	15	13	-6
Tallahatchie	6	5	5	4	3	-3
Tate	7	11	13	10	5	-2
Tippah	13	10	14	13	9	-4
Tishomingo	13	13	12	11	8	-5
Tunica	4	2	2	1	2	-2
Union	19	21	20	15	22	3
Walthall	3	1	0	1	1	-2
Warren	19	18	23	27	25	6
Washington	46	33	39	38	35	-11
Wayne	3	5	6	6	2	-1
Webster	23	21	22	14	12	-11
Wilkinson	0	1	1	1	1	1
Winston	34	29	24	24	22	-12
Yalobusha	12	12	8	5	2	-10
Yazoo	14	16	14	9	5	-9
Total MS Enrollment	2419	2331	2131	2024	1920	-499
MS Counties Represented	79	80	80	82	79	0

Source: Fall enrollment archived on the official census date.

Unduplicated Enrollment by IHL Official Academic Program Inventory (API) | Table 2.20
Fall 2023

Associate of Science	106	Bachelor of Science (Cont.)	
513801 Nursing	106	270101 Mathematics	12
Bachelor of Applied Science	72	400101 Physical Sciences	0
520201 Business Administration	64	451001 Political Science	14
512207 Public Health Education	8	420101 Psychology	26
Bachelor of Arts	89	512207 Public Health Education	178
090101 Communication	6	510203 Speech Pathology	70
230101 English	24	Bachelor of Science in Nursing	406
540101 History	21	513801 Nursing	406
309999 Interdisciplinary Studies	1	Bachelor of University Studies	1
220302 Legal Studies	1	240102 University Studies	1
270101 Mathematics	0	Master of Arts	7
500901 Music	13	050207 Women's Leadership	7
420101 Psychology	16	Master of Arts in Teaching	20
160905 Spanish	4	131205 Secondary Teacher Education	20
500101 Theatre	3	Master of Business Administration	22
050207 Women's, Gender & Sexuality Studies	0	520201 Business Administration	22
Bachelor of Business Administration	212	Master of Education	7
520201 Business Administration	212	130101 Education	7
Bachelor of Fine Arts	33	Master of Fine Arts	72
500101 Fine Arts	33	231302 Creative Writing	27
Bachelor of Music	12	500506 Theatre Education	45
500901 Music	12	Master of Public Health	17
Bachelor of Professional Studies	15	512201 Public Health	17
240199 Professional Studies	15	Master of Science	46
Bachelor of Science	636	510203 Speech-Language Pathology	46
260101 Biology	58	Master of Science in Nursing	27
400501 Chemistry	3	513899 Family Nurse Clinician	27
090101 Communication	9	Doctor of Nursing Practice	10
120599 Culinary Arts	34	513818 Nursing Practice	10
190706 Early Childhood Development	89	Undeclared	416
131202 Elementary Education	26	Unclassified - Graduate	3
190101 Family Science	21	Undeclared - Degree Seeking	11
309999 Interdisciplinary Studies	1	Undeclared - Non-Degree Seeking	402
310501 Kinesiology	81	Certificate Programs	1
220302 Legal Studies	14	513805 Post-Graduate Advanced-Practice Registered Nurse	1
		Total Enrollment	2227

Source: Fall enrollment archived on the official census date.

**Unduplicated Enrollment by IHL Official Academic Program Inventory (API) | Table 2.21
Spring 2024**

Associate of Science	103	Bachelor of Science (Cont.)	
513801 Nursing	103	270101 Mathematics	8
Bachelor of Applied Science	70	400101 Physical Sciences	1
520201 Business Administration	65	451001 Political Science	12
512207 Public Health Education	5	420101 Psychology	31
Bachelor of Arts	65	512207 Public Health Education	173
090101 Communications	5	510203 Speech Pathology	74
230101 English	16	Bachelor of Science in Nursing	395
540101 History	18	513801 Nursing	395
309999 Interdisciplinary Studies	0	Bachelor of University Studies	2
220302 Legal Studies	1	240102 University Studies	2
270101 Mathematics	0	Master of Arts	6
500901 Music	10	050207 Women's Leadership	6
451001 Political Science	0	Master of Arts in Teaching	20
420101 Psychology	10	131205 Secondary Teacher Education	20
160905 Spanish	1	Master of Business Administration	30
500101 Theatre	4	520201 Business Administration	30
050207 Women's Studies	0	Master of Education	6
Bachelor of Business Administration	192	130101 Education	6
520201 Business Administration	192	Master of Fine Arts	63
Bachelor of Fine Arts	32	231302 Creative Writing	26
500101 Fine Arts	32	500506 Theatre Education	37
Bachelor of Music	12	Master of Public Health	19
500901 Music	12	512201 Public Health	19
Bachelor of Professional Studies	8	Master of Science	46
240199 Professional Studies	8	510203 Speech-Language Pathology	46
Bachelor of Science	600	Master of Science in Nursing	26
520301 Accounting ¹	0	513899 Family Nurse Clinician	26
260101 Biology	52	Doctor of Nursing Practice	11
400501 Chemistry	3	513818 Nursing Practice	11
090101 Communications	9	Undeclared	421
120599 Culinary Arts	32	Unclassified - Graduate	28
190706 Early Childhood Development	78	Undeclared - Degree Seeking	9
131202 Elementary Education	27	Undeclared - Non-Degree Seeking	384
190101 Family Science	21	Certificate Programs	1
309999 Interdisciplinary Studies	2	513805 Post-Graduate Advanced- -Practice Registered Nurse	1
310501 Kinesiology	66		
220302 Legal Studies	11		
		Total Enrollment	2128

¹These programs are being phased out.

Source: Spring enrollment archived on the official census date.

Unduplicated Enrollment by College & Department | Table 3.1

Fall 2019 - 2023

College / Department	2019	2020	2021	2022	2023	5 Yr # Ch	5 Yr % Ch
Total Fall Enrollment	2,811	2,704	2,477	2,339	2,227	-584	-21%
College of Arts & Sciences	453	422	383	381	356	-97	-21%
Art & Design	30	27	24	28	33	3	10%
Communication	24	22	19	14	15	-9	-38%
History, Political Science, and Geography	44	46	37	39	37	-7	-16%
Languages, Literature, & Philosophy	93	74	70	68	62	-31	-33%
Music	36	26	19	22	25	-11	-31%
Psychology & Family Science	98	81	77	75	63	-35	-36%
Sciences & Mathematics	115	120	95	82	73	-42	-37%
Theatre	13	26	42	53	48	35	269%
College of Business & Professional Studies	520	499	458	418	365	-155	-30%
Business	413	414	395	362	316	-97	-23%
Culinary Arts	67	54	40	36	34	-33	-49%
Legal Studies	40	31	23	20	15	-25	-63%
Bill & Jo-Ann Vandergriff College of Nursing & Health Sciences	1,264	1,212	1,075	992	950	-314	-25%
Associate Nursing	115	118	93	90	106	-9	-8%
Baccalaureate Nursing	554	492	434	444	406	-148	-27%
Graduate Nursing	46	46	45	36	38	-8	-17%
Health & Kinesiology	445	427	370	291	284	-161	-36%
Speech-Language Pathology	104	129	133	131	116	12	12%
School of Education	182	228	194	152	143	-39	-21%
Education	182	228	194	152	143	-39	-21%
University	392	343	367	396	413	21	5%

Source: Fall enrollment archived on the official census date.

For detailed changes, see Appendix A: Endnotes.

Unduplicated Enrollment by College, Department, & Major/Concentration | Table 3.2
Fall 2019 - 2023

College/ Department	Major/Concentration	Degree	2019	2020	2021	2022	2023	5 Yr # Ch	5 Yr % Ch
College of Arts & Sciences			453	422	383	381	356	-97	-21%
Art & Design	Art Education ¹	BFA	2	0	0	0	0	-2	-100%
	Fine Arts - Studio Art ²	BFA	14	10	10	12	15	1	7%
	Fine Arts - Studio - Graphic ²	BFA	14	17	14	16	18	4	29%
	Department Total		30	27	24	28	33	3	10%
Communication	Communication	BA, BS	24	22	19	14	15	-9	-38%
	Department Total		24	22	19	14	15	-9	-38%
History, Political Science, & Geography	History	BA	30	23	11	9	14	-16	-53%
	History - Public History	BA	1	4	4	6	4	3	300%
	History - Teacher Certification	BA	8	5	4	2	3	-5	-63%
	Interdisciplinary Studies ²	BA, BS	3	2	1	3	2	-1	-33%
	Political Science	BA, BS	2	8	5	6	6	4	200%
	Pol Sci - Social Studies	BS	0	4	10	10	7	7	-
	Pol Sci - Nonprofit Advocacy	BS	0	0	2	3	1	1	-
	Department Total		44	46	37	39	37	-7	-16%
Languages, Literature, & Philosophy	Creative Writing	MFA	34	37	36	29	27	-7	-21%
	English	BA	22	10	6	6	2	-20	-91%
	English - Creative Writing	BA	12	8	11	9	6	-6	-50%
	English - Literature	BA	0	0	0	3	6	6	-
	English - Professional Writing	BA	0	0	0	0	2	2	-
	English - Teacher Certification	BA	8	4	6	9	8	0	0%
	Spanish	BA	4	4	1	1	3	-1	-25%
	Spanish - Teacher Certification	BA	2	0	0	0	1	-1	-50%
	Women's Leadership	MA	7	8	10	11	7	0	0%
	Women's, Gender and Sexuality Studies ²	BA	4	3	0	0	0	-4	-100%
	Department Total		93	74	70	68	62	-31	-33%
Music	Music	BA	8	3	1	2	3	-5	-63%
	Music - Composition	BA	0	0	1	3	4	4	-
	Music - Music Education	BM	10	8	8	6	7	-3	-30%
	Music - Music Therapy	BM	17	11	8	8	5	-12	-71%

Unduplicated Enrollment by College, Department, & Major/Concentration | Table 3.2
Fall 2019 - 2023

College/ Department	Major/Concentration	Degree	2019	2020	2021	2022	2023	5 Yr # Ch	5 Yr % Ch
Music (Cont.)	Music - Performance	BA	1	4	1	3	6	5	500%
	Department Total		36	26	19	22	25	-11	-31%
Psychology & Family Science ²	Family Science	BS	25	31	30	26	21	-4	-16%
	Psychology	BA	73	50	47	49	42	-31	-42%
	Department Total		98	81	77	75	63	-35	-36%
Sciences & Mathematics	Biology	BS	94	101	73	63	56	-38	-40%
	Biology-Teacher Certification	BA, BS	6	4	2	2	2	-4	-67%
	Chemistry	BS	5	2	4	5	3	-2	-40%
	Mathematics	BA, BS	4	3	6	6	5	1	25%
	Mathematics - Teacher Cert	BA, BS	5	10	10	6	7	2	40%
	Physical Science - Teacher Cert	BS	1	0	0	0	0	-1	-100%
	Department Total		115	120	95	82	73	-42	-37%
Theatre	Theatre	BA	4	4	3	4	2	-2	-50%
	Theatre - Theatre Education	BA	4	3	3	2	1	-3	-75%
	Theatre Education	MFA	5	19	36	47	45	40	800%
	Department Total		13	26	42	53	48	35	269%
College of Business & Professional Studies			520	499	458	418	365	-155	-30%
Business	Accounting ^{1,2}	BS	13	3	2	1	0	-13	-100%
	Business Administration ²	MBA	15	31	27	17	22	7	47%
	Business Admin - Accounting ²	BBA	28	38	35	33	29	1	4%
	Business Admin - Cul Art - Main	BAS	11	13	9	16	14	3	27%
	Business Admin - Culin Art - Gulf	BAS	2	0	0	0	0	-2	-100%
	Business Admin - Culin Art - Hinds	BAS	1	0	0	0	0	-1	-100%
	Business Admin - General Bus	BAS, BBA, & BS ¹	103	101	97	90	87	-16	-16%
	Bus Admin - Health Care Mgt	BAS, BBA, & BS ¹	85	69	61	53	41	-44	-52%
	Business Admin - Human Res Mgt	BAS, BBA, & BS ¹	26	35	36	32	16	-10	-38%
	Bus Admin - Legal Admin	BAS	5	3	7	7	5	0	0%
	Business Admin - Management	BAS, BBA, & BS ¹	33	38	37	29	31	-2	-6%
	Business Admin - Marketing	BBA, BS ¹	30	25	21	18	15	-15	-50%
	Business Admin - MIS	BAS, BBA, & BS ¹	35	33	30	24	20	-15	-43%
	Bus Admin - Nonprofit Mgt	BBA, BAS	0	3	2	1	0	0	-

Unduplicated Enrollment by College, Department, & Major/Concentration | Table 3.2
Fall 2019 - 2023

College/ Department	Major/Concentration	Degree	2019	2020	2021	2022	2023	5 Yr # Ch	5 Yr % Ch
Business (Cont.)	Bus Adm - Sports Mgt	BBA	0	4	14	24	18	18	-
	General Studies ^{1,2}	BA, BS	3	0	0	0	0	-3	-100%
	Professional Studies	BPS	20	15	17	17	15	-5	-25%
	Unclassified - Graduate	O	3	3	0	0	3	0	0%
	Department Total		413	414	395	362	316	-97	-23%
Culinary Arts	Culinary Arts	BS	67	54	40	36	34	-33	-49%
	Department Total		67	54	40	36	34	-33	-49%
Legal Studies	Legal Studies	BA, BS	40	31	23	20	15	-25	-63%
	Department Total		40	31	23	20	15	-25	-63%
Bill & Jo-Ann Vandergriff College of Nursing & Health Sciences			1,264	1,212	1,075	992	950	-314	-25%
Associate Nursing	Associate of Science Nursing	ASN	115	118	93	90	106	-9	-8%
	Department Total		115	118	93	90	106	-9	-8%
Baccalaureate Nursing	Bachelor of Science Nursing	BSN	144	144	138	161	159	15	10%
	Nursing - BSN - Tupelo	BSN	410	348	296	283	247	-163	-40%
	Department Total		554	492	434	444	406	-148	-27%
Graduate Nursing	Family Nurse Practitioner	MSN	37	29	26	22	27	-10	-27%
	Nursing Practice	DNP	9	17	19	14	10	1	11%
	Post-Graduate Adv Pr Reg Nurse	PMC	0	0	0	0	1	1	-
	Department Total		46	46	45	36	38	-8	-17%
Health & Kinesiology	Kinesiology - Exercise Science ²	BS	87	77	73	57	59	-28	-32%
	Kinesiology - Exer Sci - Hlth Prof ²	BS	0	0	0	0	1	1	-
	Kinesiology - Exer Sci - Phys Ther ^{1,2}	BS	46	49	43	39	21	-25	-54%
	Public Health ²	MPH	37	47	41	25	17	-20	-54%
	Public Health Education	BAS, BS	275	254	213	170	186	-89	-32%
	Department Total		445	427	370	291	284	-161	-36%
Speech-Language Pathology	Speech/Language Pathology	BS	71	92	86	79	70	-1	-1%
	Speech-Language Pathology	MS	33	37	47	52	46	13	39%
	Department Total		104	129	133	131	116	12	12%

Unduplicated Enrollment by College, Department, & Major/Concentration | Table 3.2
Fall 2019 - 2023

College/ Department	Major/Concentration	Degree	2019	2020	2021	2022	2023	5 Yr # Ch	5 Yr % Ch
School of Education			182	228	194	152	143	-39	-21%
Education	Early Childhood Development	BS	116	132	98	85	89	-27	-23%
	Education ²	MEd	17	18	8	10	7	-10	-59%
	Elementary Education ²	BS	34	36	35	23	26	-8	-24%
	Gifted Certification	O	2	1	0	0	0	-2	-100%
	Secondary Teacher Ed (Alt Rte) ²	MAT	12	39	49	32	20	8	67%
	University Studies ²	BUS	1	2	4	2	1	0	0%
	Department Total		182	228	194	152	143	-39	-21%
University			392	343	367	396	413	21	5%
University	Undeclared - Undergraduate	BS, O	386	343	367	396	413	27	7%
	Unclassified - Graduate	O	6	0	0	0	0	-6	-100%
	Department Total		392	343	367	396	413	21	5%
Total Enrollment			2,811	2,704	2,477	2,339	2,227	-584	-21%

Source: Fall enrollment archived on the official census date.

¹These Degrees, Programs, or Concentrations are being phased out.

²For detailed changes, see Appendix A: Endnotes.

Unduplicated Enrollment by Minor | Table 3.3

Fall 2019 - 2023

College/ Department	Minor Description	Minor Code	2019	2020	2021	2022	2023	5 Yr # Ch	5 Yr % Ch
College of Arts & Sciences			78	60	78	54	73	-5	-6%
Art & Design	Art History	AH	0	0	1	0	1	1	-
	Graphic Design	GRA	0	0	0	0	1	1	-
	Studio Art	SA	5	4	2	1	3	-2	-40%
	Department Total		5	4	3	1	5	0	0%
Communication	Communication	COM	2	3	2	0	1	-1	-50%
	Film Studies	FILM	1	3	4	3	3	2	200%
	Department Total		3	6	6	3	4	1	33%
History, Political Science, & Geography	History	HIS	5	3	3	1	4	-1	-20%
	Human Geography	HG	0	0	1	1	0	0	-
	IS-International Studies ³	INTL	0	0	0	0	1	1	-
	IS-Medieval & Ren Studies ³	MRS	0	0	0	0	1	1	-
	IS-Social Studies ³	SOCS	0	0	0	0	4	4	-
	Pre-Law	PL	0	3	3	2	0	0	-
	Political Science	POL	4	3	1	0	0	-4	-100%
	Department Total		9	9	8	4	10	1	11%
Languages, Literature, & Philosophy	English	ENG	3	1	4	1	1	-2	-67%
	English - Creative Writing	ENCW	3	5	1	2	3	0	0%
	Foreign Language ²	FORL	0	0	0	0	9	9	-
	French ¹	FRN	1	0	0	1	0	-1	-100%
	Philosophy	PHL	0	0	1	5	7	7	-
	Religious Studies	RELS	1	0	0	0	0	-1	-100%
	Spanish ¹	SPN	8	5	7	6	1	-7	-88%
	Women's, Gender and Sexuality Studies ²	WS, WGS	1	0	1	1	3	2	200%
	Department Total		17	11	14	16	24	7	41%
Music	Music	MUS	4	2	3	1	0	-4	-100%
	Department Total		4	2	3	1	0	-4	-100%
Psychology & Family Science ²	Family Science	FS	6	4	4	3	5	-1	-17%
	Gerontology	GRN	0	2	3	2	0	0	-
	Psychology	PSY	23	15	28	17	10	-13	-57%
	Department Total		29	21	35	22	15	-14	-48%

Unduplicated Enrollment by Minor | Table 3.3

Fall 2019 - 2023

College/ Department	Minor Description	Minor Code	2019	2020	2021	2022	2023	5 Yr # Ch	5 Yr % Ch
Sciences & Mathematics	Biology	BSB	0	4	2	1	2	2	-
	Chemistry	PSC	8	3	7	5	12	4	50%
	Mathematics	MA	2	0	0	0	0	-2	-100%
	Department Total		10	7	9	6	14	4	40%
Theatre	Theatre	THEA	1	0	0	1	1	0	0%
	Department Total		1	0	0	1	1	0	0%
College of Business & Professional Studies			33	26	34	44	57	24	73%
Business	Accounting	ACC	1	1	0	1	0	-1	-100%
	Business Admin - Accounting	ACT	0	0	0	0	2	2	-
	Business Admin - General Bus	GB	5	3	7	4	4	-1	-20%
	Bus Admin - Health Care Mgt	HCM	4	3	3	2	1	-3	-75%
	Business Admin - Human Res Mgt	HRM	1	0	0	1	1	0	0%
	Business Admin - Management	MGT	2	2	2	3	3	1	50%
	Business Admin - Marketing	MKT	9	7	9	6	5	-4	-44%
	Business Admin - MIS	MIS	5	1	4	5	3	-2	-40%
	Business Admin - Sports Mgt	BASM	0	0	0	0	1	1	-
	Nonprofit Mgt ^{1,2}	NM	0	0	1	2	0	0	-
	Sports Mgt ^{1,2}	BASM	0	5	4	3	0	0	-
	Department Total		27	22	30	27	20	-7	-26%
Culinary Arts	Culinary Arts	CA	1	1	2	1	2	1	100%
	Culinary Management	CMGT	0	0	0	7	18	18	-
	Food Art ¹	FDAR	1	1	0	0	0	-1	-100%
	Nutrition ²	NUTR	0	0	0	3	4	4	-
	Nutrition and Health ^{1,2}	NHLT	3	1	1	0	0	-3	-100%
	Pastry Arts	CPST	0	0	0	3	9	9	-
Department Total		5	3	3	14	33	28	560%	
Legal Studies	Legal Studies	LGS	1	1	1	3	4	3	300%
	Department Total		1	1	1	3	4	3	300%
Bill & Jo-Ann Vandergriff College of Nursing & Health Sciences			25	31	27	20	7	-18	-72%
Health & Kinesiology	Kinesiology - Exercise Science	HKX	0	0	1	3	1	1	-
	Public Health Education	PHE	24	30	25	16	6	-18	-75%

Unduplicated Enrollment by Minor | Table 3.3

Fall 2019 - 2023

College/ Department	Minor Description	Minor Code	2019	2020	2021	2022	2023	5 Yr # Ch	5 Yr % Ch
Health & Kinesiology Cont.	Sexual Health ¹	SH	1	1	1	1	0	-1	-100%
	Department Total		25	31	27	20	7	-18	-72%
Library			1	0	1	0	1	0	0%
Library	Digital Studies	DGST	1	0	1	0	1	0	0%
	Department Total		1	0	1	0	1	0	0%
School of Education			0	0	0	0	0	0	-
Total Minors			137	117	140	118	138	1	1%

Source: Fall enrollment archived on the official census date.

¹These Degrees, Programs, or Concentrations are being phased out.

²For detailed changes, see Appendix A: Endnotes.

³The minor description has been updated. Prior to fall 2016, the description did not include the 'IS-' prefix.

Unduplicated Enrollment by Second Major | Table 3.4

Fall 2019- 2023

College/ Department	Second Major/Concentration	Degree	2019	2020	2021	2022	2023	5 Yr # Ch	5 Yr % Ch
College of Arts & Sciences			11	7	7	3	6	-5	-45%
History, Political Science, & Geography	History	BA, BS	2	3	2	1	3	1	50%
	Political Science	BA	2	1	0	0	0	-2	-100%
	Department Total		4	4	2	1	3	-1	-25%
Languages, Literature, & Philosophy	English	BA	2	1	1	0	0	-2	-100%
	English - Creative Writing	BA	1	0	0	0	0	-1	-100%
	Spanish	BA	0	0	1	0	0	0	-
	Department Total		3	1	2	0	0	-3	-100%
Music	Music	BA	1	0	0	0	0	-1	-100%
	Department Total		1	0	0	0	0	-1	-100%
Psychology & Family Science ²	Family Science	BS	0	0	1	0	1	1	-
	Psychology	BA	1	1	1	0	1	0	0%
	Department Total		1	1	2	0	2	1	100%
Sciences & Mathematics	Biology	BA, BS	0	0	0	1	0	0	-
	Chemistry	BS	2	1	1	1	1	-1	-50%
	Department Total		2	1	1	2	1	-1	-50%
College of Business & Professional Studies			2	2	4	3	4	2	100%
Business	Business Admin - Accounting	BBA, BS ¹	0	0	1	0	0	0	-
	Business Admin - General Bus	BBA, BS ¹	1	1	1	0	0	-1	-100%
	Business Admin - Marketing	BBA, BS ¹	1	0	0	0	2	1	100%
	Business Admin - MIS	BBA, BS ¹	0	0	0	1	1	1	-
	Department Total		2	1	2	1	3	1	50%
Legal Studies	Legal Studies	BA, BS	0	1	2	2	1	1	-
	Department Total		0	1	2	2	1	1	-
Bill & Jo-Ann Vandergriff College of Nursing & Health Sciences			1	2	3	2	0	-1	-100%
Health & Kinesiology ²	Kinesiology - Exercise Science	BS	0	0	2	1	0	0	-
	Public Health Education	BS	1	2	1	1	0	-1	-100%
	Department Total		1	2	3	2	0	-1	-100%

Unduplicated Enrollment by Second Major | Table 3.4

Fall 2019- 2023

College/ Department	Second Major/Concentration	Degree	2019	2020	2021	2022	2023	5 Yr # Ch	5 Yr % Ch
School of Education			0	1	0	0	1	1	-
Education ²	Early Childhood Development	BS	0	0	0	0	1	1	-
	Elementary Education	BS	0	1	0	0	0	0	-
Department Total			0	1	0	0	1	1	-
Total Enrollment			14	12	14	8	11	-3	-21%

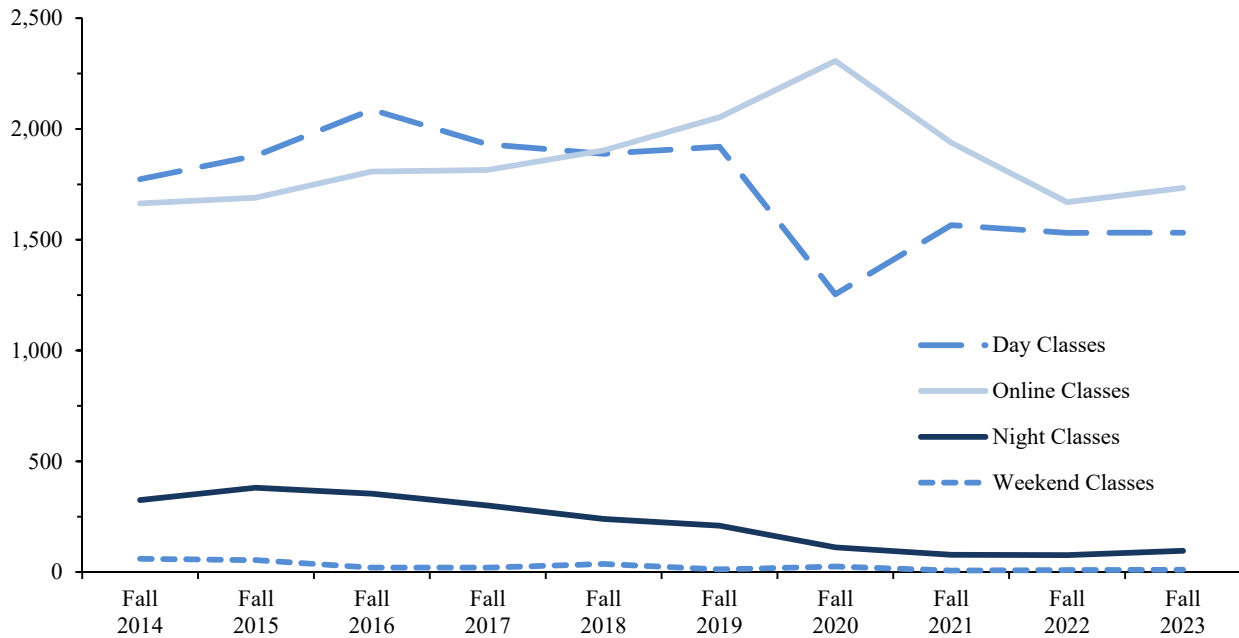
Source: Fall enrollment archived on the official census date.

¹These Degrees, Programs, or Concentrations are being phased out.

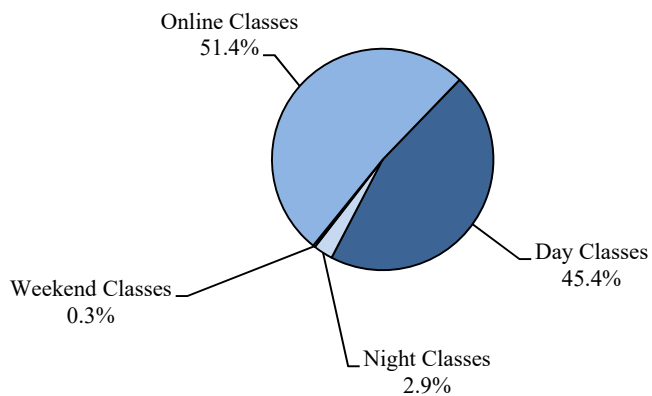
²For detailed changes, see Appendix A: Endnotes.

Class Type Enrollment | Table 3.5
Fall 2014 - Fall 2023

	Fall 2014	Fall 2015	Fall 2016	Fall 2017	Fall 2018	Fall 2019	Fall 2020	Fall 2021	Fall 2022	Fall 2023
Day Classes	1,773	1,879	2,087	1,931	1,888	1,920	1,254	1,566	1,531	1,532
Night Classes	325	381	354	300	240	209	112	78	77	96
Weekend Classes	60	54	20	20	37	12	25	7	9	11
Online Classes	1,664	1,690	1,808	1,815	1,903	2,053	2,307	1,938	1,670	1,734



Class Type Enrollment Percentages
Fall 2023



Source: Internal Grade Files were used before Fall 2013. IHL Grade Files are used Fall 2013 forward. Students may be enrolled in more than one class type, but headcount is unduplicated within class type.

Due to COVID-19, many Fall 2020 classes were moved to the online method of instructing, resulting in an increase in online hours and a decrease in face-to-face hours.

Credit Hour Generation by College & Department | Table 3.6
AY 2021, 2022, 2023, 2024

College/ Department	Academic Year 2021				Academic Year 2022				Academic Year 2023				Academic Year 2024				2021 - 2024	
	SU 20	FA 20	SP 21	AY Total	SU 21	FA 21	SP 22	AY Total	SU 22	FA 22	SP 23	AY Total	SU 23	FA 23	SP 24	AY Total	4 AY # Ch	4 AY % Ch
College of Arts & Sciences																		
Art & Design	66	425	390	881	75	421	384	880	87	474	430	991	75	507	513	1,095	214	24.3%
Communication	78	609	495	1,182	57	479	364	900	69	499	253	821	75	562	295	932	-250	-21.2%
History, Political Science, & Geography	135	1,162	868	2,165	156	894	772	1,822	173	838	592	1,603	159	815	798	1,772	-393	-18.2%
Languages, Literature, & Philosophy	770	3,541	2,878	7,189	612	3,100	2,788	6,500	536	2,797	2,524	5,857	549	2,896	2,588	6,033	-1,156	-16.1%
Music	60	445	383	888	57	318	277	652	59	367	252	678	44	425	303	772	-116	-13.1%
Psychology & Family Science	67	1,257	1,213	2,537	63	908	952	1,923	99	940	896	1,935	108	730	805	1,643	-894	-35.2%
Science & Mathematics	335	3,804	3,308	7,447	451	3,209	2,750	6,410	505	3,096	2,522	6,123	357	2,735	2,494	5,586	-1,861	-25.0%
Theatre	51	375	344	770	174	481	388	1,043	198	441	420	1,059	216	417	437	1,070	300	39.0%
Total	1,562	11,618	9,879	23,059	1,645	9,810	8,675	20,130	1,726	9,452	7,889	19,067	1,583	9,087	8,233	18,903	-4,156	-18.0%
College of Business & Professional Studies																		
Business	635	4,546	4,501	9,682	765	4,296	4,108	9,169	747	3,964	3,536	8,247	656	3,450	3,287	7,393	-2,289	-23.6%
Culinary Arts	102	868	727	1,697	54	682	546	1,282	66	549	526	1,141	93	544	576	1,213	-484	-28.5%
Legal Studies	99	519	576	1,194	54	411	480	945	60	351	420	831	75	303	339	717	-477	-39.9%
Total	836	5,933	5,804	12,573	873	5,389	5,134	11,396	873	4,864	4,482	10,219	824	4,297	4,202	9,323	-3,250	-25.8%
Bill & Jo-Ann Vandergriff College of Nursing & Health Sciences																		
Associate of Science in Nursing	112	1,185	861	2,158	80	1,024	678	1,782	64	1,022	744	1,830	56	1,280	906	2,242	84	3.9%
Bachelor of Science in Nursing	6,222	7,157	7,266	20,645	5,549	6,210	6,719	18,478	5,047	6,521	6,301	17,869	4,214	5,842	6,091	16,147	-4,498	-21.8%
Graduate Nursing	283	517	488	1,288	249	515	497	1,261	203	383	502	1,088	171	444	546	1,161	-127	-9.9%
Health & Kinesiology	726	2,784	2,737	6,247	669	2,356	2,250	5,275	513	1,963	2,148	4,624	393	1,951	1,852	4,196	-2,051	-32.8%
Nursing	462	683	758	1,903	399	567	695	1,661	459	582	736	1,777	461	588	753	1,802	-101	-5.3%
Speech-Language Pathology	159	1,233	1,198	2,590	189	1,575	1,518	3,282	234	1,392	1,311	2,937	234	1,329	1,197	2,760	170	6.6%
Total	7,964	13,559	13,308	34,831	7,135	12,247	12,357	31,739	6,520	11,863	11,742	30,125	5,529	11,434	11,345	28,308	-6,523	-18.7%

Credit Hour Generation by College & Department | Table 3.6
AY 2021, 2022, 2023, 2024

College/ Department	Academic Year 2021				Academic Year 2022				Academic Year 2023				Academic Year 2024				2021 - 2024	
	SU 20	FA 20	SP 21	AY Total	SU 21	FA 21	SP 22	AY Total	SU 22	FA 22	SP 23	AY Total	SU 23	FA 23	SP 24	AY Total	4 AY # Ch	4 AY % Ch
Library																		
Library	0	0	6	6	0	9	6	15	0	3	6	9	0	134	0	134	128	2133.3%
Total	0	0	6	6	0	9	6	15	0	3	6	9	0	134	0	134	128	2133.3%
School of Education																		
Education	186	2,250	2,058	4,494	318	1,752	1,632	3,702	297	1,425	1,461	3,183	156	1,467	1,314	2,937	-1,557	-34.6%
Total	186	2,250	2,058	4,494	318	1,752	1,632	3,702	297	1,425	1,461	3,183	156	1,467	1,314	2,937	-1,557	-34.6%
University Classes and Honors																		
University Classes	3	323	292	618	30	340	209	579	15	303	135	453	3	326	275	604	-14	-2.3%
Honors	0	99	89	188	177	105	102	384	248	77	83	408	298	102	96	496	308	163.8%
Total	3	422	381	806	207	445	311	963	263	380	218	861	301	428	371	1,100	294	36.5%
University Totals																		
Totals	10,551	33,782	31,436	75,769	10,178	29,652	28,115	67,945	9,679	27,987	25,798	63,464	8,393	26,847	25,465	60,705	-15,064	-19.9%

Source: IHL Course Files (ROTC Classes are excluded)

Online Credit Hour Generation by College & Department | Table 3.7
AY 2021, 2022, 2023, 2024

College/ Department	Academic Year 2021				Academic Year 2022				Academic Year 2023				Academic Year 2024				2021 - 2024	
	SU 20	FA 20	SP 21	AY Total	SU 21	FA 21	SP 22	AY Total	SU 22	FA 22	SP 23	AY Total	SU 23	FA 23	SP 24	AY Total	4 AY # Ch	4 AY % Ch
College of Arts & Sciences																		
Art & Design	66	108	108	282	57	72	0	129	54	0	1	55	66	0	0	66	-216	-76.6%
Communication	78	495	363	936	57	218	175	450	69	262	148	479	75	244	160	479	-457	-48.8%
History, Political Science, & Geography	135	938	796	1,869	144	592	463	1,199	144	457	446	1,047	132	392	549	1,073	-796	-42.6%
Languages, Literature, & Philosophy	770	2,408	1,979	5,157	587	1,265	1,261	3,113	497	1,006	1,069	2,572	432	1,000	1,089	2,521	-2,636	-51.1%
Music	60	417	340	817	57	54	0	111	54	57	0	111	42	60	0	102	-715	-87.5%
Psychology & Family Science	67	1,233	1,213	2,513	60	655	697	1,412	99	524	623	1,246	102	607	528	1,237	-1,276	-50.8%
Science & Mathematics	335	2,418	2,539	5,292	442	1,150	856	2,448	448	729	448	1,625	329	455	501	1,285	-4,007	-75.7%
Theatre	51	354	321	726	48	378	345	771	36	396	378	810	36	378	360	774	48	6.6%
Total	1,562	8,371	7,659	17,592	1,452	4,384	3,797	9,633	1,401	3,431	3,113	7,945	1,214	3,136	3,187	7,537	-10,055	-57.2%
College of Business & Professional Studies																		
Business	635	4,546	4,482	9,663	765	3,559	3,487	7,811	747	3,217	2,939	6,903	656	2,748	2,711	6,115	-3,548	-36.7%
Culinary Arts	102	660	489	1,251	54	417	270	741	66	330	231	627	93	267	294	654	-597	-47.7%
Legal Studies	99	501	561	1,161	54	333	396	783	60	252	285	597	75	231	204	510	-651	-56.1%
Total	836	5,707	5,532	12,075	873	4,309	4,153	9,335	873	3,799	3,455	8,127	824	3,246	3,209	7,279	-4,796	-39.7%
Bill & Jo-Ann Vandergriff College of Nursing & Health Sciences																		
Associate of Science in Nursing	6	96	10	112	0	75	12	87	0	81	9	90	0	99	10	109	-3	-2.7%
Bachelor of Science in Nursing	5,790	5,462	5,484	16,736	5,099	4,652	4,836	14,587	4,543	4,266	4,068	12,877	3,770	3,859	3,927	11,556	-5,180	-31.0%
Graduate Nursing	80	0	0	80	0	0	0	0	15	0	90	105	22	0	75	97	17	21.3%

Online Credit Hour Generation by College & Department | Table 3.7
AY 2021, 2022, 2023, 2024

College/ Department	Academic Year 2021				Academic Year 2022				Academic Year 2023				Academic Year 2024				2021 - 2024	
	SU 20	FA 20	SP 21	AY Total	SU 21	FA 21	SP 22	AY Total	SU 22	FA 22	SP 23	AY Total	SU 23	FA 23	SP 24	AY Total	4 AY # Ch	4 AY % Ch
Bill & Jo-Ann Vandergriff College of Nursing & Health Sciences																		
Health & Kinesiology	726	2,203	2,256	5,185	627	1,888	1,784	4,299	477	1,609	1,779	3,865	387	1,604	1,531	3,522	-1,663	-32.1%
Nursing	264	558	699	1,521	138	450	648	1,236	165	453	678	1,296	149	462	663	1,274	-247	-16.2%
Speech-Language Pathology	159	1,122	1,033	2,314	0	339	525	864	0	531	339	870	26	423	276	725	-1,589	-68.7%
Total	7,025	9,441	9,482	25,948	5,864	7,404	7,805	21,073	5,200	6,940	6,963	19,103	4,354	6,447	6,482	17,283	-8,665	-33.4%
School of Education																		
Education	186	1,896	1,548	3,630	318	1,311	1,290	2,919	297	1,125	1,065	2,487	156	1,107	945	2,208	-1,422	-39.2%
Total	186	1,896	1,548	3,630	318	1,311	1,290	2,919	297	1,125	1,065	2,487	156	1,107	945	2,208	-1,422	-39.2%
Library																		
Library	0	0	6	6	0	9	0	9	0	0	0	0	0	134	0	134	128	2133.3%
Total	0	0	6	6	0	9	0	9	0	0	0	0	0	134	0	134	128	2133.3%
University Classes and Honors																		
University Classes	3	323	292	618	30	60	96	186	15	39	56	110	3	27	44	74	-544	-88.0%
Honors	0	0	8	8	129	4	0	133	68	0	0	68	100	0	0	100	92	1150.0%
Total	3	323	300	626	159	64	96	319	83	39	56	178	103	27	44	174	-452	-72.2%
University Totals																		
Totals	9,612	25,738	24,527	59,877	8,666	17,481	17,141	43,288	7,854	15,334	14,652	37,840	6,651	14,097	13,867	34,615	-25,262	-42.2%

Source: IHL Course Files (ROTC Classes are excluded)

Degrees Awarded by IHL Official Academic Program Inventory (API) | Table 3.8
Academic Year 2022-2023

Associate of Science	37	Bachelor of Science (Cont.)	
513801 Nursing	37	400101 Physical Sciences	0
Bachelor of Applied Science	42	451001 Political Science	5
520201 Business Administration	41	420101 Psychology	10
512207 Public Health Education	1	512207 Public Health Education	26
Bachelor of Arts	25	510203 Speech Pathology	34
090101 Communications	1	Bachelor of Science in Nursing	357
230101 English	10	513801 Nursing	357
540101 History	6	Bachelor of University Studies	1
309999 Interdisciplinary Studies	0	240102 University Studies	1
220302 Legal Studies	1	Master of Arts	2
270101 Mathematics	0	050207 Women's Leadership	2
500901 Music	0	Master of Arts in Teaching	18
420101 Psychology	5	131205 Secondary Teacher Education	18
160905 Spanish	1	Master of Business Administration	18
500101 Theatre	1	520201 Business Administration	18
050207 Women's, Gender & Sexuality Studies	0	Master of Education	5
Bachelor of Business Administration	88	130101 Education	5
520201 Business Administration	88	Master of Fine Arts	26
Bachelor of Fine Arts	6	231302 Creative Writing	13
500101 Fine Arts	6	500506 Theatre Education	13
Bachelor of Music	5	Master of Public Health	8
500901 Music	5	512201 Public Health	8
Bachelor of Professional Studies	14	Master of Science	26
240199 Professional Studies	14	510203 Speech-Language Pathology	26
Bachelor of Science	167	Master of Science in Nursing	19
260101 Biology	10	513899 Family Nurse Clinician	19
400501 Chemistry	2	Doctor of Nursing Practice	6
090101 Communications	3	513818 Nursing Practice	6
120599 Culinary Arts	9		
190706 Early Childhood Development	2	Total Degrees Awarded	870
131202 Elementary Education	22		
190101 Family Science	7	Certificate Programs	0
309999 Interdisciplinary Studies	1	513805 Post-Graduate Advanced- Practice Registered Nurse	0
310501 Kinesiology	25		
220302 Legal Studies	8	Total Degrees/Certificates Awarded	870
270101 Mathematics	3		

Source: IHL Degree Files

**Degrees Awarded by CIP, Major/Concentration, Race/Ethnicity, and Gender | Table 3.9
Academic Year 2022-2023**

CIP	Major Description/Degree	Total	American Indian or Alaskan Native		Asian		Black/ African American		Hispanic		Multiple Race		Native Hawaiian or Pacific Islander		Non-Resident Alien		White	
			F	M	F	M	F	M	F	M	F	M	F	M	F	M	F	M
			College of Arts & Sciences Total		104	2	0	1	2	22	8	0	0	0	0	0	0	1
050207	Women's, Gender & Sexuality Studies BA	0																
	Women's Leadership MA	2				1											1	
090101	Communication BA	1															1	
	Communication BS	3					1										2	
160905	Spanish BA	1															1	
190101	Family Science BS	7	1				4										2	
230101	English BA	4															3	1
	English - Creative Writing BA	4															4	
	English - Literature BA	2					2											
	English-Teacher Certification BA	0																
231302	Creative Writing MFA	13															12	1
260101	Biology BS	10			1		3										3	3
	Biology-Teacher Certification BS	0																
270101	Mathematics BS	2			1		1											
	Mathematics-Teacher Certification BS	1					1											
309999	Interdisciplinary Studies BA	0																
	Interdisciplinary Studies BS	1															1	
400501	Chemistry BS	2					1										1	
420101	Psychology BA	5					3										2	
	Psychology BS	10					4										6	
451001	Political Science BS	0																
	Pol Sci-NonProfit Advocacy BS	1															1	
	Pol Sci-Social Studies BS	4					1							1		1	1	

**Degrees Awarded by CIP, Major/Concentration, Race/Ethnicity, and Gender | Table 3.9
Academic Year 2022-2023**

CIP	Major Description/Degree	Total	American Indian or Alaskan Native		Asian		Black/ African American		Hispanic		Multiple Race		Native Hawaiian or Pacific Islander		Non-Resident Alien		White	
			F	M	F	M	F	M	F	M	F	M	F	M	F	M	F	M
			500101	Fine Arts-Studio Art [BFA]	6					1	3							
500101	Fine Arts-Studio-Graphic [BFA]	0																
500101	Theatre [BA]	1																1
500101	Theatre-Theatre Education [BA]	0																
500506	Theatre Education [MFA]	13			1												9	3
500901	Music [BA]	0																
500901	Music - Music Education [BM]	3					1	1										1
500901	Music-Music Therapy [BM]	2					1											1
500901	Music-Performance [BA]	0																
540101	History [BA]	1																1
540101	History-Public History [BA]	4	1					1										2
540101	History-Teacher Certification [BA]	1																1
College of Business & Professional Studies Total		179	0	0	2	0	60	12	1	1	0	0	0	0	0	4	67	32
120599	Culinary Arts [BS]	9					3										3	3
220302	Legal Studies [BA]	1																1
220302	Legal Studies [BS]	8					3	1									3	1
240199	Professional Studies [BPS]	14					9	1										4
520201	Bus Adm - Sports Mgt [BBA]	5					1	1							1		1	1
520201	Bus Admin - Cul Art - Main [BAS]	6					3	2										1
520201	Bus Admin - Legal Admin [BAS]	3					3											
520201	Bus Admin-Health Care Mgt [BAS]	5					3											2

**Degrees Awarded by CIP, Major/Concentration, Race/Ethnicity, and Gender | Table 3.9
Academic Year 2022-2023**

CIP	Major Description/Degree	Total	American Indian or Alaskan Native		Asian		Black/ African American		Hispanic		Multiple Race		Native Hawaiian or Pacific Islander		Non-Resident Alien		White		
			F	M	F	M	F	M	F	M	F	M	F	M	F	M	F	M	
520201 (cont.)	Bus Admin-Health Care Mgt BBA	13					8											5	
	Bus Admin-Nonprofit Mgt BBA	0																	
	Business Admin-Accounting BBA	16					4	2										8	2
	Business Admin - General Bus BAS	7					2											2	3
	Business Admin - General Bus BBA	26			1		7	2							3			8	5
	Business Admin - Human Res Mgt BAS	9					4		1									4	
	Business Admin - Human Res Mgt BBA	11					2											9	
	Business Admin - Management BAS	4																4	
	Business Admin - Management BBA	7					2											2	3
	Business Admin - Marketing BAS	2					1			1									
	Business Admin - Marketing BBA	5					1	1										2	1
	Business Admin - MIS BAS	5					1												4
	Business Admin - MIS BBA	5					1	1										1	2
	Business Administration MBA	18			1		2	1										8	6
Bill & Jo-Ann Vandergriff College of Nursing & Health Sciences Total		539	7	0	5	1	196	12	1	0	0	0	0	0	0	1	0	281	35
310501	Kinesiology-Exer Sci-Phys Ther BS	5			1		3												1
	Kinesiology-Exercise Science BS	20					7	3										5	5
510203	Speech/Language Pathology BS	34					3											31	

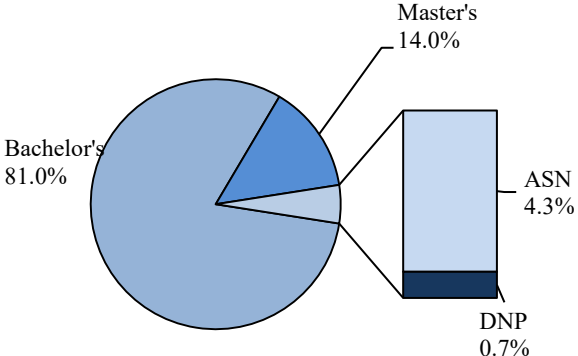
**Degrees Awarded by CIP, Major/Concentration, Race/Ethnicity, and Gender | Table 3.9
Academic Year 2022-2023**

CIP	Major Description/Degree	Total	American Indian or Alaskan Native		Asian		Black/ African American		Hispanic		Multiple Race		Native Hawaiian or Pacific Islander		Non-Resident Alien		White	
			F	M	F	M	F	M	F	M	F	M	F	M	F	M	F	M
			510203 (cont.)	Speech-Language Pathology MS	26					2								
512201	Public Health MPH	8					5		1								2	
512207	Public Health Education BAS	1			1													
	Public Health Education BS	26	2				19	1									4	
513801	Associate of Science Nursing ASN	37					18										15	4
	Bachelor of Science Nursing BSN	66	2		3	1	10	1									41	8
	Nursing - BSN - Tupelo BSN	291	3				126	7						1			140	14
513818	Nursing Practice DNP	6					1										5	
513899	Family Nurse Practitioner MSN	19					2										14	3
School of Education Total		48	0	0	1	0	9	1	0	0	0	0	0	0	0	0	33	4
130101	Education MED	5			1		1										3	
131202	Elementary Education BS	22					3										19	
131205	Secondary Teacher Ed (Alt Rte) MAT	18					3	1									10	4
190706	Early Childhood Development BS	2					1										1	
240102	University Studies BUS	1					1											
Grand Total		870	9	0	9	3	287	33	2	1	0	0	0	0	2	4	435	85

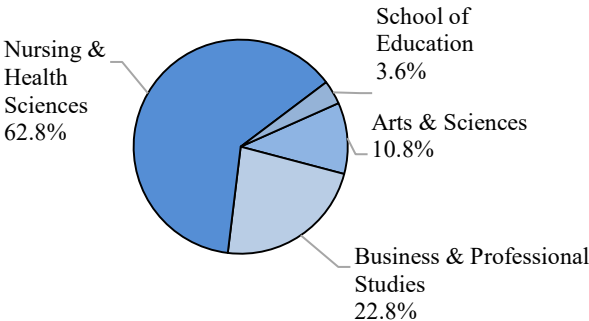
Source: IHL Degree Files and Internal Degree Files

Summary of Degrees Awarded | Table 3.10
Academic Year 2022 - 2023

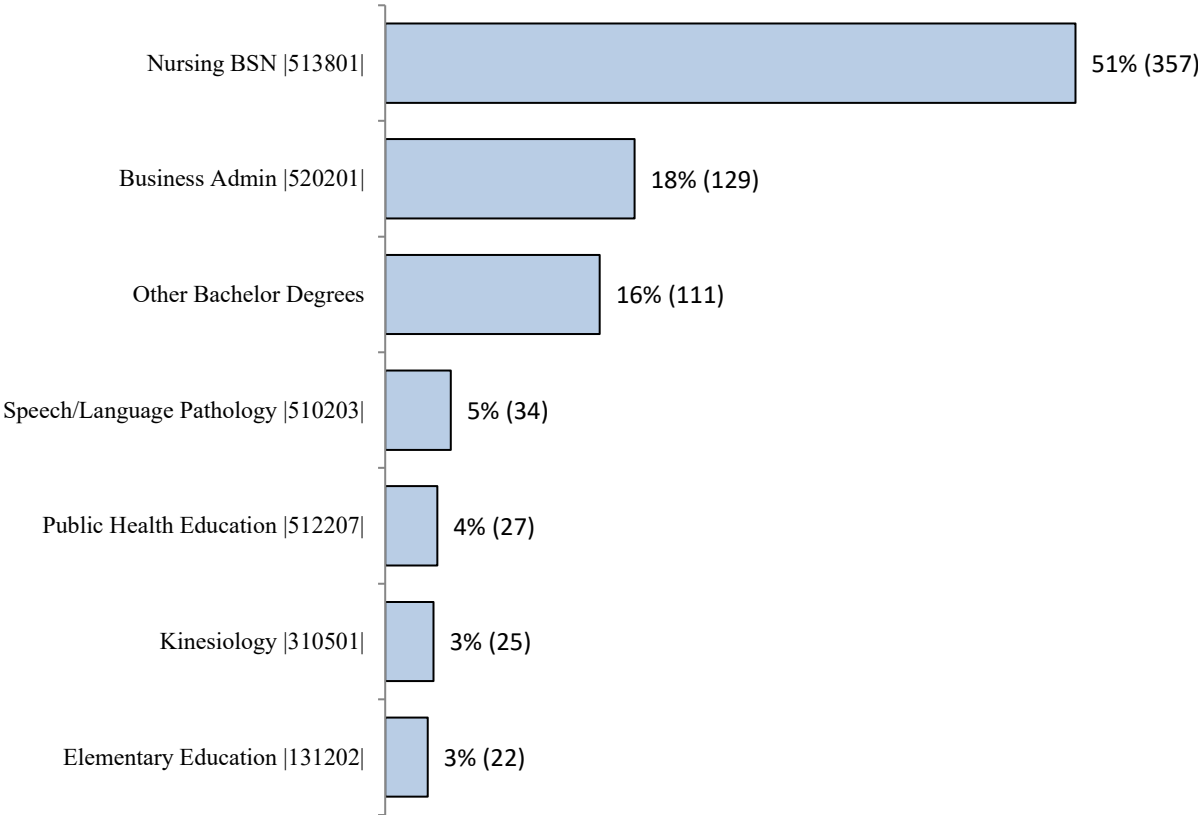
Degrees Awarded by Level



Bachelor's Degrees Awarded by College



Most Popular Bachelor's Degrees by CIP Code and IHL Program Title



Source: IHL Degree Files
 Other Bachelor's Degrees include all Bachelor's programs with 15 or less degrees awarded.

History of Degrees Awarded by Program and CIP | Table 3.11
Academic Years 2019 - 2023

College / Program	CIP	2019	2020	2021	2022	2023	5 Yr # Ch	5 Yr % Ch
College of Arts & Sciences Total		112	134	105	105	104	-8	-7%
Art Education	131302	2	2	0	0	0	-2	-100%
Biology	260101	16	19	22	25	10	-6	-38%
Chemistry	400501	1	5	0	0	2	1	100%
Communication	090101	10	7	6	8	4	-6	-60%
Creative Writing - Master's	231302	8	8	10	13	13	5	63%
English	230101	13	20	8	6	10	-3	-23%
Family Science	190101	6	6	10	7	7	1	17%
Fine Arts	500101	15	7	4	3	6	-9	-60%
History	540101	6	5	12	7	6	0	0%
Interdisciplinary Studies	309999	1	2	1	1	1	0	0%
Mathematics	270101	2	0	2	2	3	1	50%
Music	500901	7	6	7	5	5	-2	-29%
Physical Sciences	400101	0	0	0	0	0	0	0%
Physical Theatre - Master's	500506	7	2	3	0	0	-7	-100%
Political Science	451001	4	0	2	7	5	1	25%
Psychology	420101	12	36	13	11	15	3	25%
Social Sciences	450101	1	0	0	0	0	-1	-100%
Spanish	160905	0	2	3	1	1	1	100%
Theatre	500101	1	1	0	1	1	0	0%
Theatre Education - Master's	500506	0	0	0	7	13	13	100%
Women's Leadership - Master's	050207	0	5	2	1	2	2	100%
Women's, Gender & Sexuality Studies	050207	0	1	0	0	0	0	0%
College of Business & Professional Studies Total		189	173	165	162	179	-10	-5%
Accounting	520301	16	9	1	0	0	-16	-100%
Business Administration	520201	105	112	109	111	129	24	23%
Business Administration - Master's	520201	8	6	10	19	18	10	125%
Culinary Arts	120599	20	15	15	12	9	-11	-55%
General Studies	240101	8	2	1	0	0	-8	-100%
Legal Studies	220302	21	16	14	5	9	-12	-57%
Professional Studies	240199	10	13	15	15	14	4	40%

History of Degrees Awarded by Program and CIP | Table 3.11
Academic Years 2019 - 2023

College / Program	CIP	2019	2020	2021	2022	2023	5 Yr # Ch	5 Yr % Ch
Public Safety Administration	440401	1	0	0	0	0	-1	-100%
Bill & Jo-Ann Vandergriff College of Nursing & Health Sciences Total		584	573	658	594	539	-45	-8%
Doctor of Nursing Practice	513818	3	7	2	12	6	3	100%
Family Nurse Clinician - Master's	513899	35	27	33	26	19	-16	-46%
Kinesiology	310501	29	26	25	36	25	-4	-14%
Nursing - ASN	513801	55	47	49	35	37	-18	-33%
Nursing - BSN	513801	360	371	441	379	357	-3	-1%
Public Health - Master's	512201	15	18	12	25	8	-7	-47%
Public Health Education	512207	46	38	55	28	27	-19	-41%
Speech-Language Pathology	510203	29	24	23	32	34	5	17%
Speech-Language Pathology - Master's	510203	12	15	18	21	26	14	117%
School of Education Total		26	37	63	66	48	22	85%
Early Childhood Development	190706	0	2	3	7	2	2	100%
Education - Master's	130101	11	5	10	6	5	-6	-55%
Elementary Education	131202	14	27	42	33	22	8	57%
Secondary Teacher Education - Master's	131205	1	2	6	16	18	17	1700%
University Studies	240102	0	1	2	4	1	1	100%
Grand Total		911	917	991	927	870	-41	-5%

Source: IHL Degree Files

History of Degrees Awarded by Program, CIP, and Gender | Table 3.12
Academic Years 2019 - 2023

College / Program	CIP	2019		2020		2021		2022		2023		Total
		F	M	F	M	F	M	F	M	F	M	
College of Arts & Sciences Total		93	19	112	22	81	24	90	15	80	24	560
Art Education	131302	2	0	2	0	-	-	-	-	-	-	4
Biology	260101	15	1	15	4	15	7	22	3	6	4	92
Chemistry	400501	1	0	1	4	-	-	-	-	1	1	8
Communication	090101	8	2	7	0	5	1	6	2	3	1	35
Creative Writing - Master's	231302	7	1	6	2	7	3	12	1	12	1	52
English	230101	12	1	18	2	7	1	6	0	9	1	57
Family Science	190101	5	1	6	0	9	1	6	1	7	-	36
Fine Arts	500101	13	2	5	2	4	0	2	1	2	4	35
History	540101	3	3	2	3	4	8	7	0	3	3	36
Interdisciplinary Studies	309999	0	1	2	0	1	0	1	0	1	0	6
Mathematics	270101	2	0	0	0	2	0	2	0	3	0	9
Music	500901	6	1	5	1	6	1	4	1	3	2	30
Physical Sciences	400101	-	-	-	-	-	-	-	-	-	-	0
Physical Theatre - Master's	500506	5	2	2	0	3	0	-	-	-	-	12
Political Science	451001	2	2	-	-	1	1	3	4	3	2	18
Psychology	420101	10	2	33	3	12	1	9	2	15	0	87
Social Sciences	450101	1	0	-	-	-	-	-	-	-	-	1
Spanish	160905	-	-	1	1	3	0	1	0	1	0	7
Theatre	500101	1	0	1	0	-	-	1	0	0	1	4
Theatre Education - Master's	500506	-	-	-	-	-	-	7	0	9	4	20
Women's Leadership - Master's	050207	-	-	5	0	2	0	1	0	2	0	10
Women's, Gender & Sexuality Studies	050207	-	-	1	0	-	-	-	-	-	-	1
College of Business & Professional Studies Total		143	46	134	39	115	50	113	49	130	49	868
Accounting	520301	14	2	8	1	0	1	-	-	-	-	26
Business Administration	520201	81	24	86	26	73	36	73	38	93	36	566
Business Administration - Master's	520201	4	4	5	1	7	3	14	5	11	7	61
Culinary Arts	120599	16	4	10	5	13	2	9	3	6	3	71
General Studies	240101	7	1	2	0	1	0	-	-	-	-	11
Legal Studies	220302	15	6	13	3	13	1	4	1	7	2	65
Professional Studies	240199	6	4	10	3	8	7	13	2	13	1	67
Public Safety Administration	440401	0	1	-	-	-	-	-	-	-	-	1

History of Degrees Awarded by Program, CIP, and Gender | Table 3.12
Academic Years 2019 - 2023

College / Program	CIP	2019		2020		2021		2022		2023		Total
		F	M	F	M	F	M	F	M	F	M	
Bill & Jo-Ann Vandergriff College of Nursing & Health Sciences Total		525	59	513	60	597	61	532	62	491	48	2,948
Doctor of Nursing Practice	513818	3	0	7	0	2	0	12	0	6	0	30
Family Nurse Clinician - Master's	513899	31	4	24	3	32	1	25	1	16	3	140
Kinesiology	310501	21	8	20	6	20	5	27	9	16	9	141
Nursing - ASN	513801	51	4	43	4	45	4	33	2	33	4	223
Nursing - BSN	513801	321	39	336	35	401	40	340	39	326	31	1,908
Public Health - Master's	512201	15	0	13	5	9	3	20	5	8	0	78
Public Health Education	512207	43	3	32	6	47	8	24	4	26	1	194
Speech Pathology	510203	28	1	23	1	23	0	32	0	34	0	142
Speech-Language Pathology - Master's	510203	12	0	15	0	18	0	19	2	26	0	92
School of Education Total		25	1	36	1	58	5	57	9	43	5	240
Early Childhood Development	190706	-	-	2	0	3	0	7	0	2	0	14
Education - Master's	130101	11	0	5	0	9	1	6	0	5	0	37
Elementary Education	131202	14	0	27	0	40	2	30	3	22	0	138
Secondary Teacher Education - Master's	131205	0	1	2	0	4	2	11	5	13	5	43
University Studies	240102	-	-	0	1	2	0	3	1	1	0	8
Grand Total		786	125	795	122	851	140	792	135	744	126	4,616

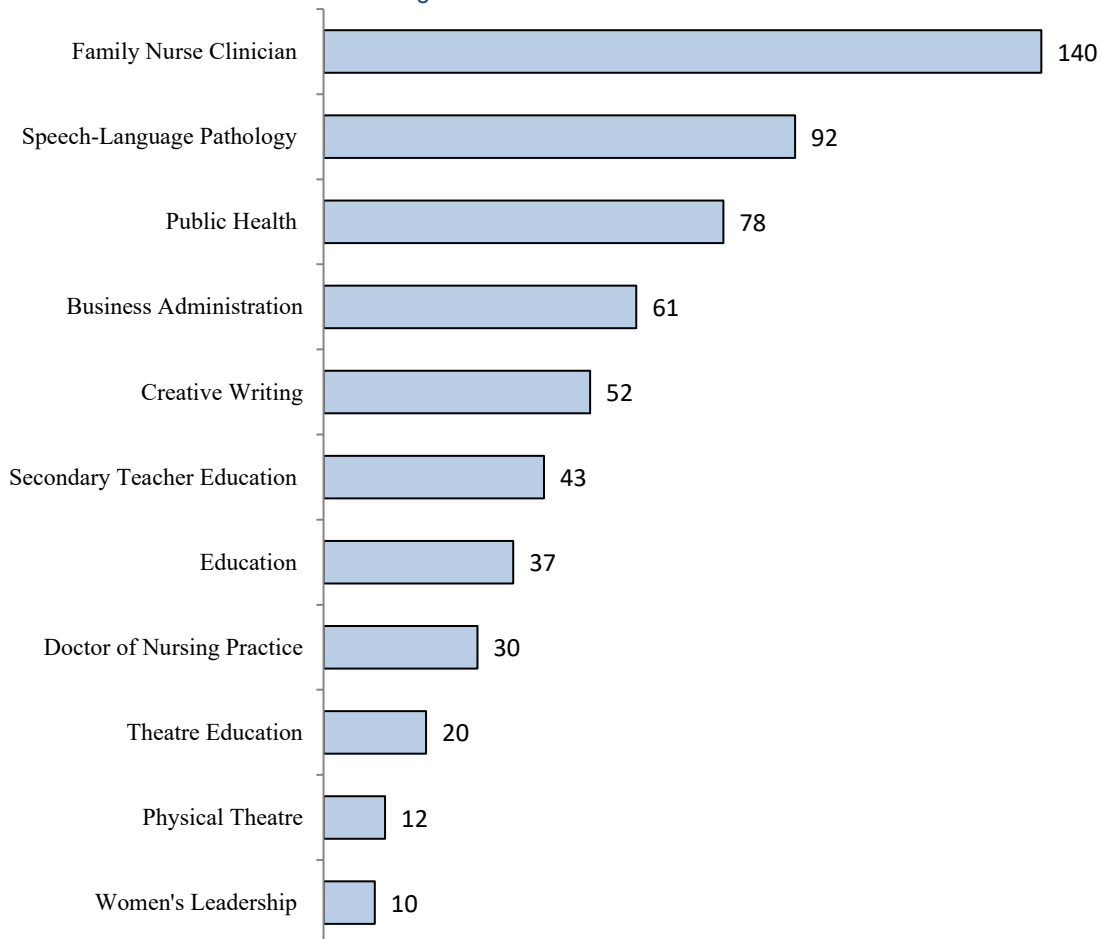
Source: IHL Degree Files

Top Bachelor's & Graduate Degrees Awarded in the last 5 Years | Table 3.13
Academic Years 2019 - 2023

Top 10 Bachelor's Degrees Awarded in the Last 5 Years

1	Nursing - BSN	1908	50%	6	Elementary Education	138	4%
2	Business Administration	566	15%	7	Biology	92	2%
3	Public Health Education	194	5%	8	Psychology	87	2%
4	Speech-Language Pathology	142	4%	9	Culinary Arts	71	2%
5	Kinesiology	141	4%	10	Professional Studies	67	2%

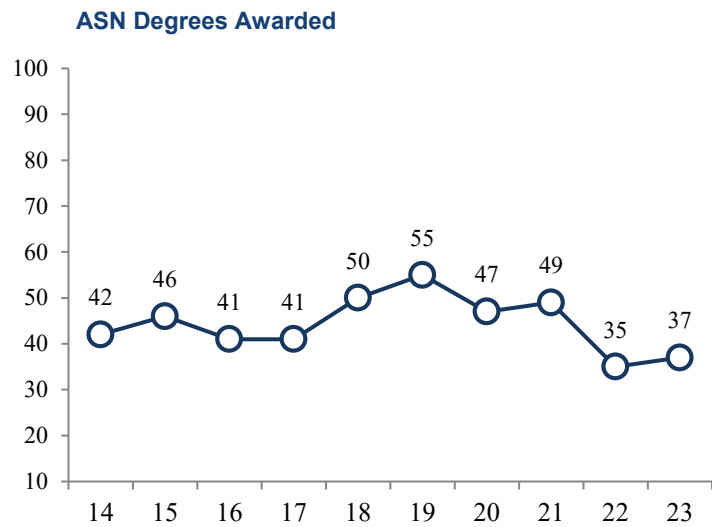
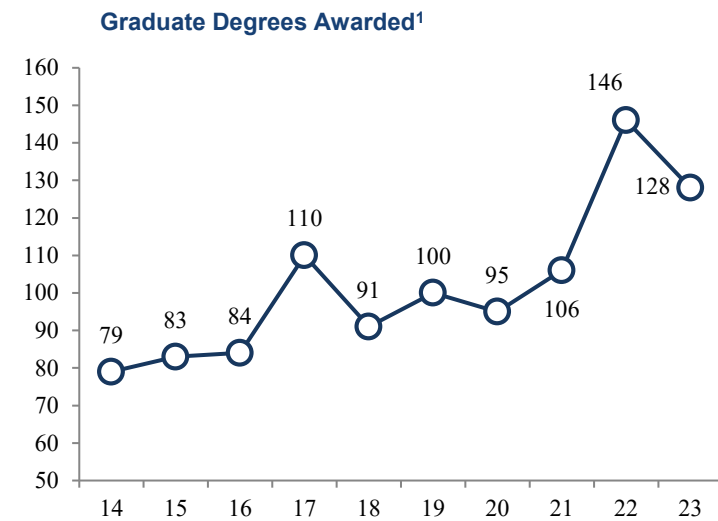
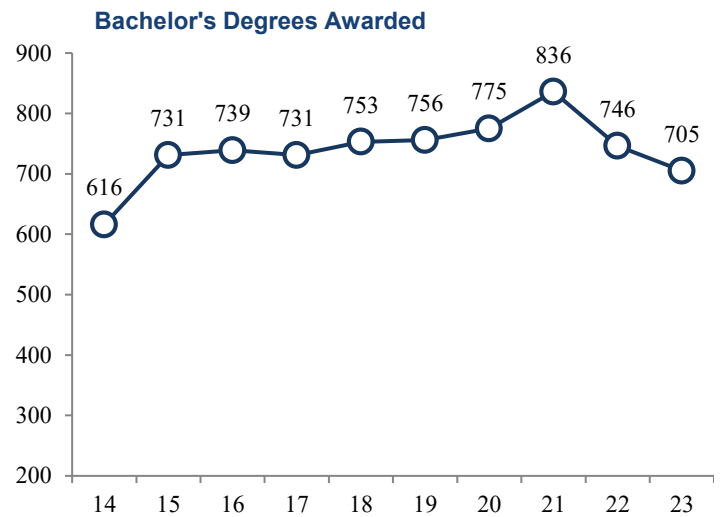
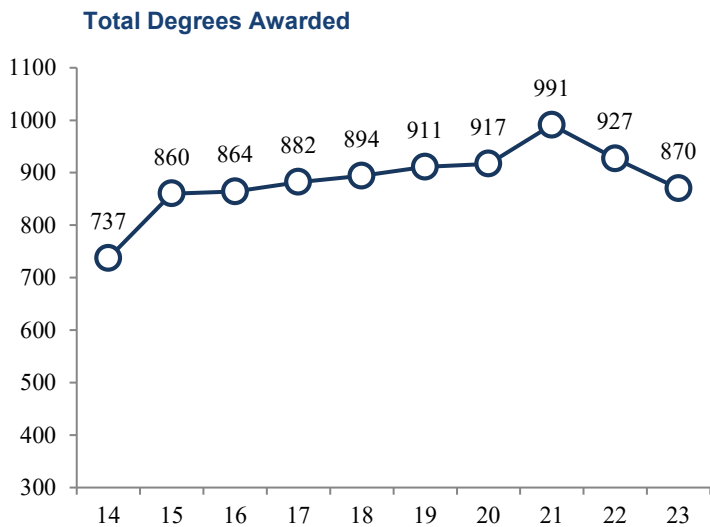
Graduate Degrees Awarded in the Last 5 Years



Source: IHL Degree Files

History of Degrees Awarded by Academic Level | Table 3.14
Academic Years 2014 - 2023

Degree	Degrees Awarded					Total	5 Yr # Ch	5 Yr % Ch
	2019	2020	2021	2022	2023			
ASN	55	47	49	35	37	223	-18	-33%
Bachelor's	756	775	836	746	705	3,818	-51	-7%
Master's	97	88	104	134	122	545	25	26%
DNP	3	7	2	12	6	30	3	100%
Total	911	917	991	927	870	4,616	-41	-5%



Source: IHL Degree Files

¹Includes DNP Degrees

Degrees Awarded by College, Department, CIP & Major/Concentration | Table 3.15
Academic Years 2019 - 2023

College/ Department	CIP	Major/Concentration	Degree	2019	2020	2021	2022	2023	Grand Total	
College of Arts & Sciences Total				112	134	105	105	104	560	
Art & Design	131302	Art Education	BFA	2	2	0	0	0	4	
	500101	Fine Arts - Studio Art	BFA	9	3	2	0	6	20	
		Fine Arts - Studio - Graphic	BFA	6	4	2	3	0	15	
	Department Total				17	9	4	3	6	39
Communication	090101	Communication	BA	5	2	2	5	1	15	
			BS	5	5	4	3	3	20	
	Department Total				10	7	6	8	4	35
History, Political Science, & Geography	309999	Interdisciplinary Studies	BA	1	2	1	0	0	4	
			BS	0	0	0	1	1	2	
	450101	Social Sciences	BS	1	0	0	0	0	1	
			Political Science	BA	4	0	0	0	0	4
	451001	Political Science	BS	0	0	0	1	0	1	
			Political Science - Nonprofit Advocacy	BS	0	0	0	0	1	1
			Political Science - Social Studies	BS	0	0	2	6	4	12
	540101	History	BA	4	5	12	5	1	27	
			History - Public History	BA	1	0	0	1	4	6
			History - Teacher Certification	BA	1	0	0	1	1	3
Department Total				12	7	15	15	12	61	
Languages, Literature, & Philosophy	050207	Women's Leadership	MA	0	5	2	1	2	10	
		Women's, Gender & Sexuality Studies	BA	0	1	0	0	0	1	
	160905	Spanish	BA	0	2	3	1	1	7	
			English	BA	3	13	4	2	4	26
	230101	English - Creative Writing	BA	6	5	3	2	4	20	
			English - Literature	BA	0	0	0	0	2	2
			English - Teacher Certification	BA	4	2	1	2	0	9
	231302	Creative Writing	MFA	8	8	10	13	13	52	
	Department Total				21	36	23	21	26	127
Music	500901	Music	BA	2	1	2	0	0	5	
		Music - Music Education	BM	5	0	1	1	3	10	
		Music - Music Therapy	BM	0	5	4	3	2	14	
		Music - Performance	BA	0	0	0	1	0	1	
Department Total				7	6	7	5	5	30	
Psychology & Family Science	190101	Family Science	BS	6	6	10	7	7	36	
	420101	Psychology	BA	12	36	13	8	5	74	
			BS	0	0	0	3	10	13	
Department Total				18	42	23	18	22	123	
Sciences & Mathematics	260101	Biology	BS	15	18	20	25	10	88	
		Biology - Teacher Certification	BS	1	1	2	0	0	4	
	270101	Mathematics	BS	2	0	1	2	2	7	
		Mathematics - Teacher Certification	BS	0	0	1	0	1	2	
	400101	Physical Science - Teacher Certification	BS	0	0	0	0	0	0	
	400501	Chemistry	BS	1	5	0	0	2	8	
Department Total				19	24	24	27	15	109	

Degrees Awarded by College, Department, CIP & Major/Concentration | Table 3.15
Academic Years 2019 - 2023

College/ Department	CIP	Major/Concentration	Degree	2019	2020	2021	2022	2023	Grand Total	
Theatre	500101	Theatre	BA	1	0	0	0	1	2	
		Theatre - Theatre Education	BA	0	1	0	1	0	2	
	500506	Physical Theatre	MFA	7	2	3	0	0	12	
		Theatre Education	MFA	0	0	0	7	13	20	
	Department Total				8	3	3	8	14	36
College of Business & Professional Studies Total				189	173	165	162	179	868	
Business	240101	General Studies	BS	8	2	1	0	0	11	
	240199	Professional Studies	BPS	10	13	15	15	14	67	
	440401	Public Safety - Ad/FSM/Gen Bus	BS	1	0	0	0	0	1	
		Business Admin - Culin Art - Gulf	BAS	2	1	0	0	0	3	
		Business Admin - Culin Art - Hinds	BAS	3	1	0	0	0	4	
		Business Admin - Culin Art - Main	BAS	6	2	2	4	6	20	
		Business Admin - General Business	BAS	11	11	5	6	7	40	
		Business Admin - Health Care Mgt	BAS	9	12	7	5	5	38	
		Business Admin - Human Res Mgt	BAS	2	5	4	7	9	27	
		Business Admin - Legal Admin	BAS	2	1	3	1	3	10	
		Business Admin - Management	BAS	0	1	0	4	4	9	
		Business Admin - Marketing	BAS	0	0	3	2	2	7	
		Business Admin - MIS	BAS	12	3	8	7	5	35	
		Business Admin - Accounting	BBA	0	5	12	9	16	42	
		Business Admin - General Business	BBA	4	14	16	20	26	80	
	520201	Business Admin - Health Care Mgt	BBA	4	14	20	14	13	65	
		Business Admin - Human Res Mgt	BBA	3	5	7	10	11	36	
		Business Admin - Management	BBA	1	5	10	9	7	32	
		Business Admin - Marketing	BBA	1	5	5	4	5	20	
		Business Admin - MIS	BBA	0	4	3	5	5	17	
		Business Admin - Nonprofit Mgt	BBA	0	0	0	1	0	1	
		Business Admin - Sports Mgt	BBA	0	0	0	1	5	6	
		Business Admin - General Business	BS	15	4	0	1	0	20	
		Business Admin - Health Care Mgt	BS	14	8	2	1	0	25	
		Business Admin - Human Res Mgt	BS	6	2	0	0	0	8	
		Business Admin - Management	BS	4	1	1	0	0	6	
		Business Admin - Marketing	BS	2	4	1	0	0	7	
		Business Admin - MIS	BS	4	4	0	0	0	8	
	520201	Business Administration	MBA	8	6	10	19	18	61	
	520301	Accounting	BS	16	9	1	0	0	26	
	Department Total				148	142	136	145	161	732
	Culinary Arts	120599	Culinary Arts	BS	20	15	15	12	9	71
Department Total				20	15	15	12	9	71	
Legal Studies	220302	Legal Studies	BA	6	5	2	1	1	15	
			BS	15	11	12	4	8	50	
	Department Total				21	16	14	5	9	65

Degrees Awarded by College, Department, CIP & Major/Concentration | Table 3.15
Academic Years 2019 - 2023

College/ Department	CIP	Major/Concentration	Degree	2019	2020	2021	2022	2023	Grand Total
Bill & Jo-Ann Vandergriff College of Nursing & Health Sciences Total				584	573	658	594	539	2948
Associate Nursing	513801	Associate of Science Nursing	ASN	55	47	49	35	37	223
	Department Total			55	47	49	35	37	223
Baccalaureate Nursing	513801	Bachelor of Science Nursing	BSN	65	60	64	50	66	305
		Nursing - BSN - Tupelo	BSN	295	311	377	329	291	1603
	Department Total			360	371	441	379	357	1908
Graduate Nursing	513818	Doctor of Nursing Practice	DNP	3	7	2	12	6	30
	513899	Family Nurse Practitioner	MSN	35	27	33	26	19	140
	Department Total			38	34	35	38	25	170
Health & Kinesiology	310501	Kinesiology - Exer Sci - Phys Ther	BS	4	8	11	13	5	41
		Kinesiology - Exercise Science	BS	24	18	14	23	20	99
		Kinesiology - Teaching	BS	1	0	0	0	0	1
	512201	Public Health	MPH	15	18	12	25	8	78
	512207	Public Health Education	BAS	1	2	4	3	1	11
			BS	45	36	51	25	26	183
	Department Total			90	82	92	89	60	413
Speech-Language Pathology	510203	Speech-Language Pathology	BS	29	24	23	32	34	142
		Speech-Language Pathology	MS	12	15	18	21	26	92
	Department Total			41	39	41	53	60	234
School of Education Total				26	37	63	66	48	240
Education	190706	Early Childhood Development	BS	0	2	3	7	2	14
	130101	Education	MED	11	5	10	6	5	37
	131202	Elementary Education	BS	14	27	42	33	22	138
	131205	Secondary Teacher Ed (Alt Rte)	MAT	1	2	6	16	18	43
	240102	University Studies	BUS	0	1	2	4	1	8
	Department Total			26	37	63	66	48	240
Total Degrees Awarded				911	917	991	927	870	4616

Source: IHL Degree Files and Internal Degree Files

History of Degrees Awarded by Second Major | Table 3.16
Academic Years 2019 - 2023

College / Second Major	2019	2020	2021	2022	2023	Total
College of Arts & Sciences Total	6	1	2	1	2	12
Chemistry	0	0	0	0	1	1
English	1	0	0	0	0	1
English - Creative Writing	1	0	0	0	0	1
Family Science	1	0	0	0	0	1
History	2	0	1	0	1	4
Mathematics	1	0	0	0	0	1
Political Science	0	1	1	0	0	2
Spanish	0	0	0	1	0	1
College of Business & Professional Studies Total	2	1	0	0	1	4
Bus Admin-Health Care Mgt	1	0	0	0	0	1
Business Admin - General Bus	1	0	0	0	0	1
Business Admin - Marketing	0	1	0	0	0	1
Business Admin - Nonprofit Mgt	0	0	0	0	1	1
Bill & Jo-Ann Vandergriff College of Nursing & Health Sciences Total	1	0	0	0	0	1
Public Health Education	1	0	0	0	0	1
School of Education Total	0	0	1	0	0	1
Elementary Education	0	0	1	0	0	1
Grand Total	9	2	3	1	3	18

Source: Internal Degree Files

As of AY 2017, second majors are reported to IPEDS. They are currently not reported to IHL.

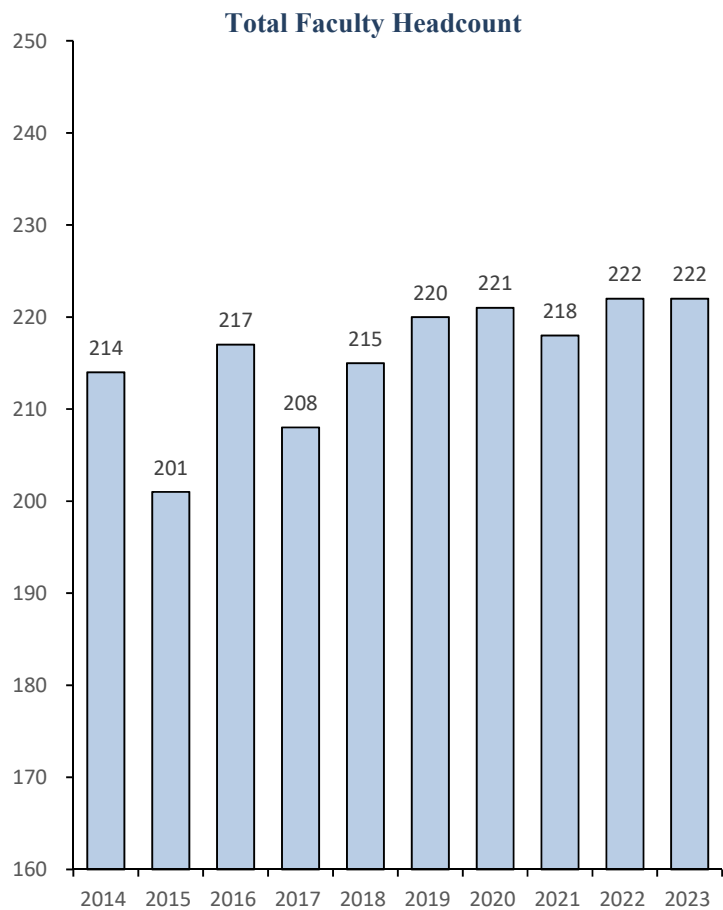
Faculty Profile | Table 4.1
Fall 2014 - 2023

Faculty			
Fall Sem.	Full-time	Part-time	Total
2014	138	76	214
2015	137	64	201
2016	142	75	217
2017	140	68	208
2018	141	74	215
2019	140	80	220
2020	143	78	221
2021	141	77	218
2022	138	84	222
2023	137	85	222

Full-time Faculty										
Fall Sem.	Rank				Degree				Contract	
	Prof.	Asso.	Asst.	Inst.	Term.	Spec.	Mstr.	Bach.	Acad	Fiscal
2014	34	24	35	45	93	0	43	2	108	30
2015	35	23	38	41	95	0	40	2	108	29
2016	34	26	40	42	96	0	45	1	109	33
2017	35	27	38	40	95	1	43	1	107	33
2018	36	27	36	42	94	1	45	1	107	34
2019	42	26	34	38	94	1	45	0	121	19
2020	41	21	41	40	100	1	42	0	121	22
2021	42	18	41	40	97	1	43	0	124	17
2022	46	20	32	40	95	0	43	0	123	15
2023	43	22	31	41	92	0	45	0	106	31

Full-time Faculty					
Fall Sem.	Gender		Race/Ethnicity		
	Male	Female	Black	White	Other
2014	47	91	6	125	7
2015	45	92	6	123	8
2016	44	98	5	129	8
2017	41	99	6	125	9
2018	43	98	7	126	8
2019	47	93	10	122	8
2020	45	98	11	123	9
2021	41	100	13	116	12
2022	44	94	14	115	9
2023	43	94	13	115	9

Part-time Faculty					
Fall Sem.	Gender		Race/Ethnicity		
	Male	Female	Black	White	Other
2019	17	63	6	72	2
2020	18	60	4	72	2
2021	21	56	9	65	3
2022	18	66	11	71	2
2023	21	64	10	73	2



Source: IHL Employee and Instructional Files

Faculty Credit Hour Production by Course Level | Table 4.2
Fall 2022 & 2023

Fall 2022 Student Credit Hours (SCH) by Faculty Terminal Degree Status

	Lower CH	Upper CH	Graduate CH	Total CH
Terminal Degrees	7,327	6,146	1,772	15,245
Non-Terminal Degrees	5,499	6,880	363	12,742
TOTAL	12,826	13,026	2,135	27,987

Fall 2023 Student Credit Hours (SCH) by Faculty Terminal Degree Status

	Lower CH	Upper CH	Graduate CH	Total CH
Terminal Degrees	7,035	5,152	1,672	13,859
Non-Terminal Degrees	5,894	6,764	330	12,988
TOTAL	12,929	11,916	2,002	26,847

Fall 2022 Student Credit Hours (SCH) by Faculty Full-time/Part-time Status

	Lower CH	Upper CH	Graduate CH	Total CH
Full-time Faculty	9,587	10,872	1,862	22,321
Part-time Faculty	3,239	2,154	273	5,666
TOTAL	12,826	13,026	2,135	27,987

Fall 2023 Student Credit Hours (SCH) by Faculty Full-time/Part-time Status

	Lower CH	Upper CH	Graduate CH	Total CH
Full-time Faculty	9,483	10,004	1,765	21,252
Part-time Faculty	3,446	1,912	237	5,595
TOTAL	12,929	11,916	2,002	26,847

Source: IHL Course files (ROTC Credit Hours are excluded), IHL Employee files & IHL Instructional files.

Full-time faculty: SCHs generated by full-time employees in EEO category 2, faculty.

Part-time faculty: SCHs generated by part-time employees in EEO category 2, faculty. SCHs generated by all other employees not in EEO category 2 (Administrators and staff) are included with part-time faculty.

Full-time Employees by EEOC

Term	10 - Administrator		20 - Faculty		30 - Professional		40 - Technical		50 - Clerical		60 - Skilled Crafts		70 - Service/Maintenance		Total
	Female	Male	Female	Male	Female	Male	Female	Male	Female	Male	Female	Male	Female	Male	
Fall 2020	20	11	98	45	51	19	1	12	43	3	0	0	3	8	314
Fall 2021	21	10	100	41	47	23	3	10	41	2	0	0	3	7	308
Fall 2022	21	13	94	44	51	22	5	9	42	2	0	7	14	17	341
Fall 2023	20	11	94	43	49	22	4	11	42	1	0	5	19	15	336

Term	Black			White			Other			Black			White			Other			Total			
	Black	White	Other	Black	White	Other	Black	White	Other	Black	White	Other	Black	White	Other	Black	White	Other				
Fall 2020	4	26	1	11	123	9	17	51	2	2	11	0	17	29	0	0	0	0	5	5	1	314
Fall 2021	4	26	1	13	116	12	14	54	2	2	11	0	14	29	0	0	0	0	4	5	1	308
Fall 2022	4	29	1	14	115	9	11	59	3	2	12	0	12	32	0	0	7	0	20	11	0	341
Fall 2023	4	26	1	13	115	9	14	54	3	2	13	0	15	28	0	0	5	0	23	11	0	336

Part-time Employees by EEOC

Term	10 - Administrator		20 - Faculty		30 - Professional		40 - Technical		50 - Clerical		60 - Skilled Crafts		70 - Service/Maintenance		Total
	Female	Male	Female	Male	Female	Male	Female	Male	Female	Male	Female	Male	Female	Male	
Fall 2020	0	0	60	18	9	1	0	1	3	0	0	1	3	3	99
Fall 2021	0	0	56	21	16	1	0	2	5	0	0	0	3	2	106
Fall 2022	0	0	66	18	13	3	0	1	5	3	0	0	3	1	113
Fall 2023	0	0	64	21	12	4	0	1	5	0	0	0	2	6	115

Term	Black			White			Other			Black			White			Other			Total			
	Black	White	Other	Black	White	Other	Black	White	Other	Black	White	Other	Black	White	Other	Black	White	Other				
Fall 2020	0	0	0	4	72	2	1	7	2	0	1	0	1	2	0	0	1	0	1	5	0	99
Fall 2021	0	0	0	9	65	3	2	13	2	0	2	0	2	3	0	0	0	0	2	3	0	106
Fall 2022	0	0	0	11	71	2	4	12	0	0	1	0	3	5	0	0	0	0	1	2	1	113
Fall 2023	0	0	0	10	73	2	4	12	0	0	1	0	1	4	0	0	0	0	3	4	1	115

Source: IHL Employee Files

Facilities Management/Physical Plant in FY 2023 was no longer outsourced. This change resulted in increases in various EEOC categories.

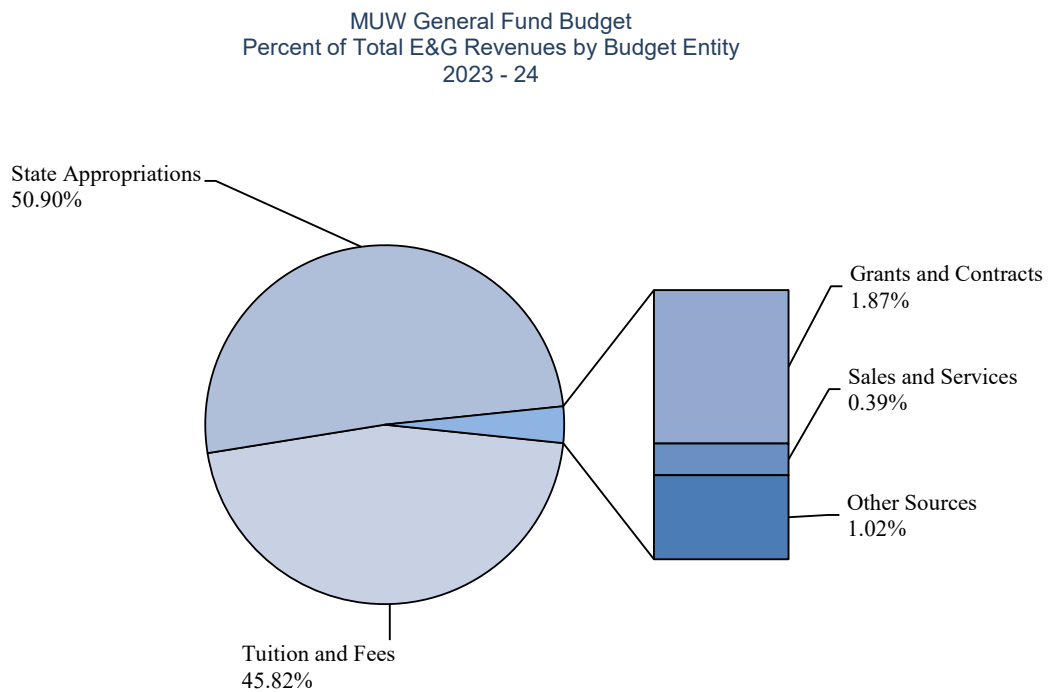
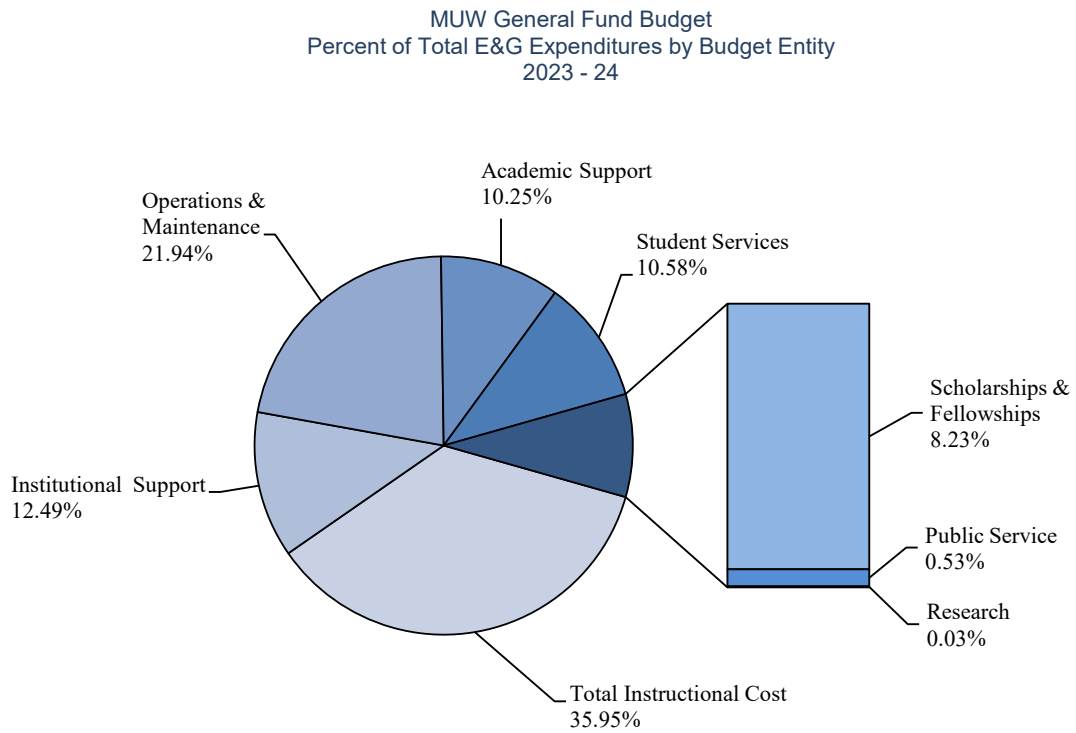
Summary of Budgeted E&G Revenues and Expenditures | Table 5.1
FY 2023-24 & FY 2022-23

	2023-24		2022-23			
CURRENT FUND REVENUES						
Tuition and Fees	\$	21,665,357	45.82%	\$	20,533,900	45.12%
State Govt. Appropriations						
General Support	\$	15,176,430	32.10%	\$	14,660,708	32.22%
Washington Scholarship	\$	11,250	0.02%	\$	11,250	0.02%
Interest Funds	\$	9,389	0.02%	\$	9,389	0.02%
MS Gov. School	\$	145,000	0.31%	\$	145,000	0.32%
Education Enhancement Fund	\$	3,142,661	6.65%	\$	3,032,582	6.66%
Educ. Enhance. Fund-Capital Purposes	\$	2,500,000	5.29%	\$	2,500,000	5.49%
Capital Projects	\$	538,804	1.14%	\$	538,804	1.18%
Funding for Efficiencies	\$	15,625	0.03%	\$	15,625	0.03%
Geospatial Licenses	\$	23,951	0.05%	\$	23,951	0.05%
Reappropriated Funds	\$	-	0.00%	\$	-	0.00%
SB3045-HB 1353 Replace Bond Bill Funds	\$	2,500,000	5.29%	\$	2,500,000	5.49%
Sub-Total	\$	24,063,110	50.90%	\$	23,437,309	51.50%
Local Govt. Appropriations	\$	-	0.00%	\$	-	0.00%
Total Govt. Appropriations	\$	24,063,110	50.90%	\$	23,437,309	51.50%
Grants and Contracts						
Federal Grants and Contracts	\$	9,000	0.02%	\$	8,500	0.02%
State Grants and Contracts	\$	200,000	0.42%	\$	200,000	0.44%
Other Grants and Contracts	\$	675,000	1.43%	\$	675,000	1.48%
Sub-Total	\$	884,000	1.87%	\$	883,500	1.94%
Sales and Services	\$	182,500	0.39%	\$	164,200	0.36%
Other Sources	\$	484,280	1.02%	\$	488,804	1.07%
TOTAL CURRENT REVENUES	\$	47,279,247	100.00%	\$	45,507,713	100.00%
CURRENT FUND EXPENDITURES						
Total Instructional Cost	\$	16,998,743	35.95%	\$	16,301,929	35.82%
Research	\$	14,000	0.03%	\$	14,000	0.03%
Public Service	\$	250,828	0.53%	\$	263,905	0.58%
Academic Support	\$	4,845,126	10.25%	\$	4,794,815	10.54%
Student Services	\$	5,003,158	10.58%	\$	4,598,702	10.11%
Institutional Support	\$	5,905,546	12.49%	\$	5,606,544	12.32%
Operations & Maintenance	\$	10,372,139	21.94%	\$	10,031,113	22.04%
Scholarships & Fellowships	\$	3,889,705	8.23%	\$	3,896,705	8.56%
Mandatory Transfers	\$	-	0.00%	\$	-	0.00%
Non-Mandatory Transfers	\$	-	0.00%	\$	-	0.00%
TOTAL CURRENT EXPENDITURES	\$	47,279,247	100.00%	\$	45,507,713	100.00%

Source: MUW General Fund Budgets

*Total Current Expenditures for FY 2023-24 are rounded to match the MUW Budget Book.

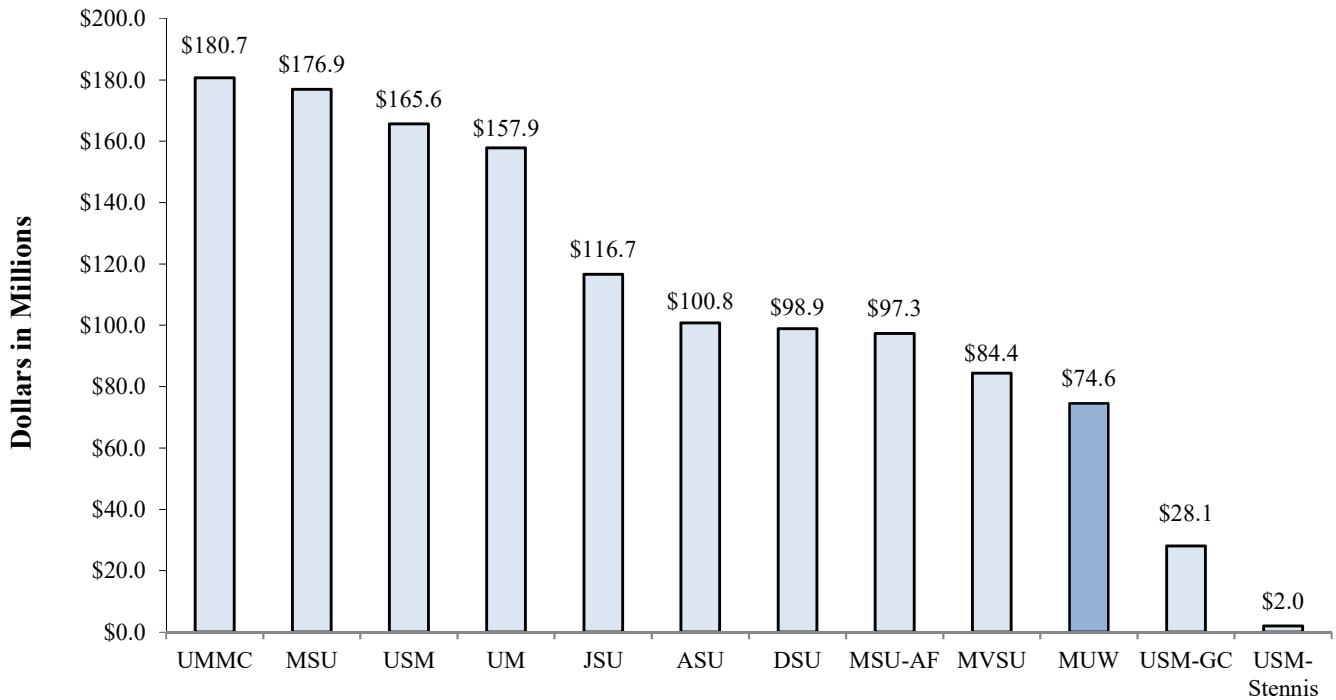
MUW General Fund Budget Percent of Total E&G Revenues and Expenditures by Budget Entity | Table 5.2
 FY 2023-24



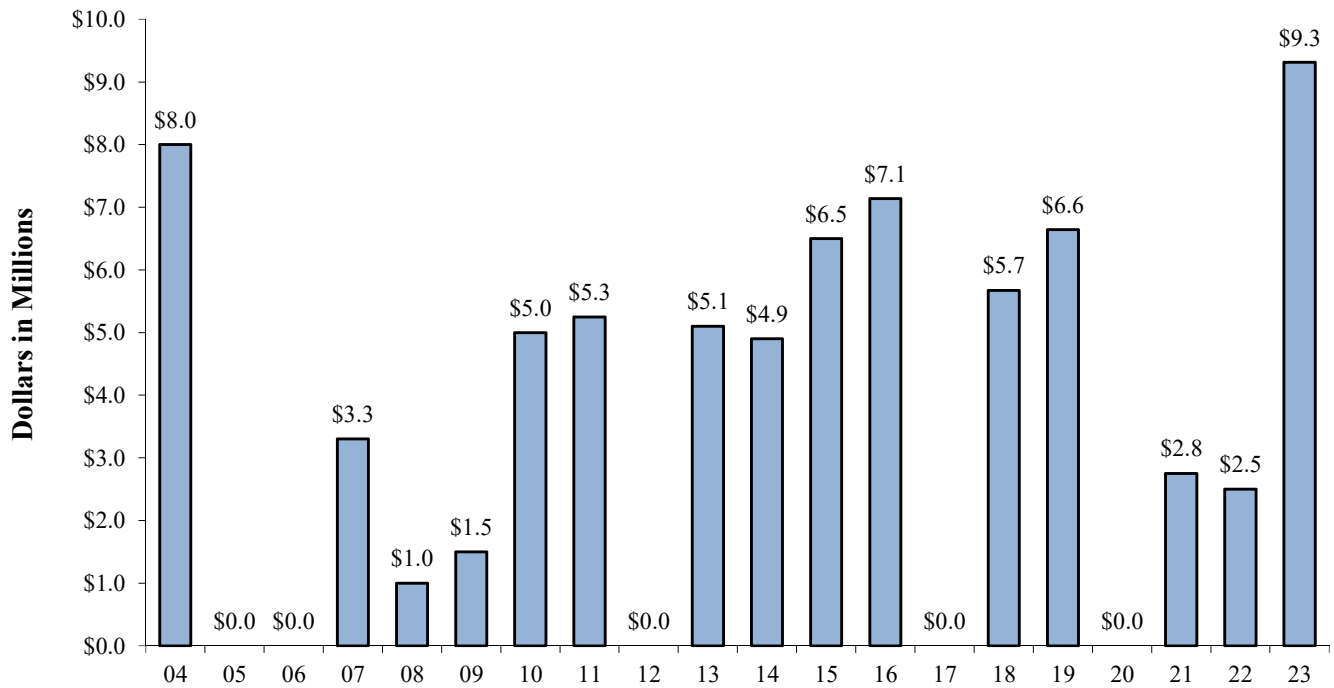
Source: MUW General Fund Budgets

Authorization of State General Obligation Bonds for IHL & MUW | Table 5.3

Authorization of State General Obligation Bonds for IHL - FY 2003-2004 through FY 2022-2023



Authorization of State General Obligation Bonds for MUW - FY 2003-2004 through FY 2022-2023



Source: State General Obligation Bonds

For Fiscal Years 2021-2022 and 2022-2023, the legislature appropriated capital funds in lieu of bonds in HB 1353.

The \$35.6 million Ayers bonds divided between ASU, JSU, and MVSU are not included.

MS Emergency Mgt. Agency disaster recovery funds are not included.

Mississippi University for Women Accreditation Information (Updated 1.22.2024)

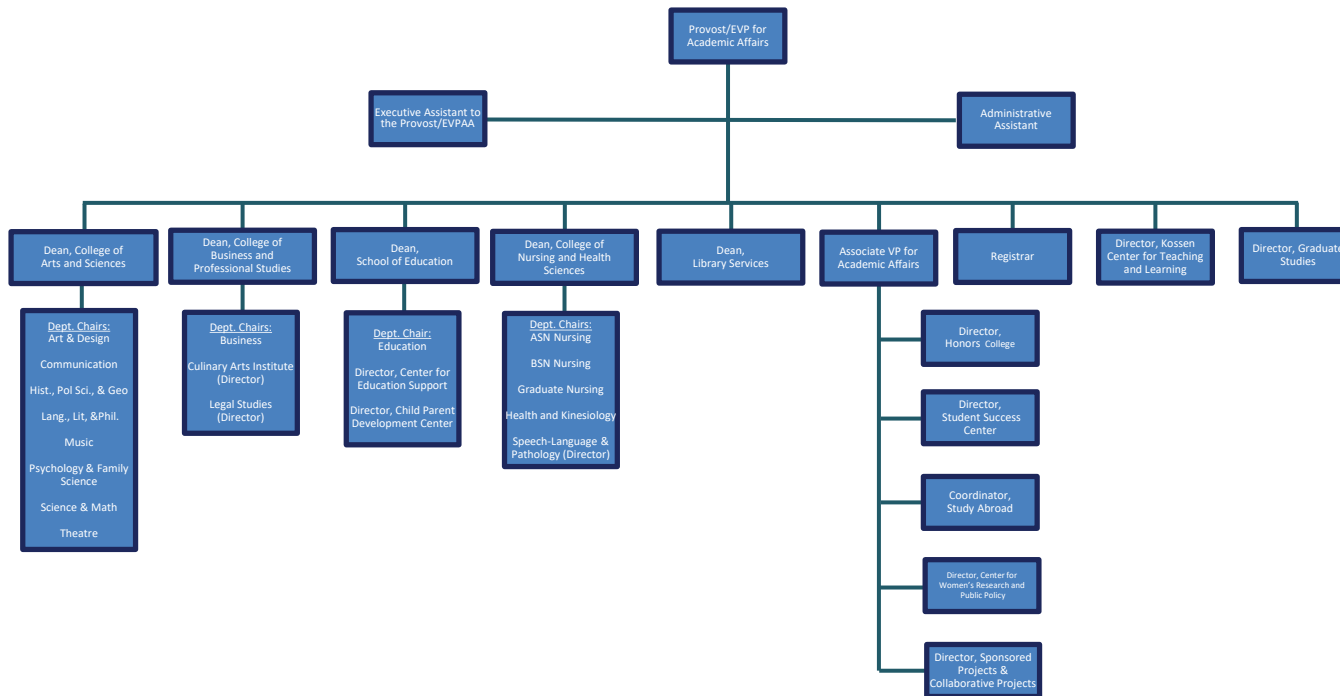
Mississippi University for women (MUW) is accredited by the Southern Association of Colleges and Schools Commission on Colleges to award degrees at the levels of associate, baccalaureate, masters, and doctorate. Contact the Commission on Colleges at 1866 Southern Lane, Decatur, Georgia 30033-4097 or call 404-679-4500 for questions about the accreditation at MUW. Initial accreditation was received in 1921. MUW's last reaffirmation was 2014; its next reaffirmation is scheduled for 2024. Carla Lowery, Chief Information Officer, is the SACSCOC campus liason. For additional information: <http://sacscoc.org/institutions/>

Below is a table of accredited or approved MUW programs.

Accredited Program	Campus Contact for Accreditation	Accrediting Body (Acronym)	Website of Accrediting Body	Last Visit	Next Visit	Accreditation Agency Action
Associate of Science in Nursing	Dr. Brandy Larmon and Dr. Mary Helen Ruffin	1. Accrediting Commission for Education in Nursing (ACEN)	www.acenursing.org	Fall 2021	Fall 2029	Continuing accreditation for the maximum allowed, 8 years
		2. Mississippi Institutions of Higher Learning Board of Trustees (IHL BOT)	www.mississippi.edu	Fall 2021	Fall 2029	Next visit scheduled Fall 2029
Bachelor of Science in Nursing	Dr. Brandy Larmon and Dr. Maria Scott	1. Commission on Collegiate Nursing Education (CCNE)	www.ccneaccreditation.org	Spring 2020	Spring 2030	Continuing accreditation for the maximum allowed, 10 yrs.
		2. Mississippi Institutions of Higher Learning Board of Trustees (IHL BOT)	www.mississippi.edu	Spring 2020	Spring 2030	Next visit scheduled Spring 2030
Master of Science in Nursing	Dr. Brandy Larmon and Dr. Teresa Hamill	1. Commission on Collegiate Nursing Education (CCNE)	www.ccneaccreditation.org	Spring 2020	Spring 2030	Continuing accreditation for the maximum allowed, 10 yrs.
		2. Mississippi Institutions of Higher Learning Board of Trustees (IHL BOT)	www.mississippi.edu	Spring 2020	Spring 2030	Next visit scheduled Spring 2030
Master of Science in Speech-Language Pathology	Dr. Brandy Larmon	Council on Academic Accreditation in Audiology and Speech-Language Pathology (CAA) of the American Speech-Language-Hearing Association	caa.asha.org	Spring 2019	Spring 2027	Continuing accreditation for the maximum allowed, 8 yrs.
Doctor of Nursing Practice and Post Graduate APRN Certificate Program	Dr. Brandy Larmon and Dr. Teresa Hamill	1. Commission on Collegiate Nursing Education (CCNE)	www.ccneaccreditation.org	Spring 2020	Spring 2030	Continuing accreditation for the maximum allowed, 10 yrs.
		2. Mississippi Institutions of Higher Learning Board of Trustees (IHL BOT)	www.mississippi.edu	Spring 2020	Spring 2030	Next visit scheduled Spring 2030

Accredited Program	Campus Contact for Accreditation	Accrediting Body (Acronym)	Website of Accrediting Body	Last Visit	Next Visit	Accreditation Agency Action
Bachelor of Business Administration	Dr. Marty Brock and Dr. Dee Larson	Accreditation Council for Business Schools and Programs (ACBSP)	www.acbsp.org	Fall 2021	Fall 2031	Continuing accreditation for the max allowed, 10 yrs. BBA with concentrations in Accounting, General Business, Management, Health Care Management, Human Resources Management, Marketing, and Management Information Systems Quality Assurance Report due September 25, 2025
Bachelor of Arts in Music Bachelor of Music in Music	Dr. Julia Mortyakova	National Association of Schools of Music (NASM)	www.nasm.arts-accredit.org	Spring 2014	Spring 2024	Continuing accreditation for the max allowed, 10 yrs.
Bachelor of Fine Arts	Alex Stelioes-Wills	National Association of Schools of Art and Design (NASAD)	www.nsad.arts-accredit.org	Spring 2023	AY 2032-2033	Continuing accreditation for the max allowed, 10 yrs.
Bachelor of Arts/Science in Legal Studies	Wesley Garrett, J.D.	American Bar Association (ABA)	www.americanbar.org/groups/paralegals.html	Spring 2016	Spring 2024	Continuing approval for the max allowed, 7 yrs.
All teacher education programs	Dr. Martin Hatton	1. Council for Accreditation for Educator Preparation (CAEP)	http://caepnet.org/	Fall 2022	Fall 2026	Probationary Accreditation for Initial-Licensure Programs
		2. Mississippi Department of Education (MDE)	www.mde.k12.ms.us	Spring 2020	Spring 2024	Continuing Accreditation

Provost / Executive Vice President for Academic Affairs



Appendix A: Endnotes

All data prior to Fall 2020 have been updated to reflect the Fall 2020 college, department, and program structure. Beginning Fall 2020, the School of Education which contains the Education Department was established. Since the Education Department was moved from the College of Arts, Sciences, & Education in Fall 2020, this college was renamed the College of Arts & Sciences. The Psychology & Family Studies Department was renamed the Psychology & Family Science Department in Fall 2020 to reflect the restructuring of the major from Family Studies to Family Science with a change in CIP Code from 190704 to 190101.

Between Fall 2017 and Summer 2020, the College of Arts & Sciences was coded as the College of Arts, Sciences, & Education. Prior to Fall 2017, the college was referred to as the College of Arts & Sciences.

Prior to Fall 2017, the College of Nursing & Health Sciences was coded as the College of Nursing & Speech Language Pathology. The College of Education & Human Sciences was dissolved during the Fall 2017 college restructure. It housed three departments: Education, Psychology & Family Studies and Health & Kinesiology. The departments of Education and Psychology & Family Studies were moved to the College of Arts, Sciences & Education. The Health & Kinesiology Department was moved to the College of Nursing & Health Sciences.

Changes within the College of Arts, Sciences & Education

Department of Art & Design

- The Art Education [BFA] and Fine Art [BA] programs are being phased out.
- Prior to Fall 2016, 'Fine Arts - Studio Art' was coded as 'Studio Art' and 'Fine Arts - Studio - Graphic' was coded as 'Graphic Design'.
- Prior to Fall 2016, all pre-Fine Arts majors [BFA] were included with the Fine Arts [BA] majors.
- Fall 2017 forward, all pre-majors will be coded in a degree program. All pre-art majors will be coded in Fine Arts - Studio Art [BFA] and Fine Arts - Studio - Graphic [BFA].

Department of Education

- The University Studies (IHL mandated C2C Degree) program was originally housed in the Business Department of the College of Business & Professional Studies. This program was moved to the Education Department in Fall 2020.
- Between Fall 2017 and Summer 2019, pre-Elementary Education majors were coded in the Interdisciplinary Studies (BS) program within the Department of History, Political Science, & Geography. Beginning Fall 2019, these students are now coded within the Early Childhood Development program within the Education Department.
- In Fall 2018, the Educational Leadership [MED], Gifted Studies [MED] and Reading/Literacy [MED] programs were consolidated into Education [MED].
- Prior to Fall 2016, Secondary Teacher Ed (Alt Rte) was coded as Education [MAT].

Department of History, Political Science & Geography

- Social Sciences [BA, BS] is being phased out.
- Between Fall 2017 and Summer 2019, the pre-Elementary Education majors were coded within the Interdisciplinary Studies [BS] program.

Department of Languages, Literature, & Philosophy

- In September 2022, The Women's Studies [WO STU, BA] major was renamed to Women's, Gender and Sexuality Studies [WO STUD, BA], and the Women's Studies [WS] minor was renamed to Women's, Gender and Sexuality Studies [WGS].

Department of Sciences & Mathematics

- No current changes.

Department of Theatre

- Physical Theatre [MFA] is being phased out.

Changes within the College of Business & Professional Studies

Department of Business

- The University Studies (IHL mandated C2C Degree) program was originally housed in the Business Department of the College of Business & Professional Studies. This program was moved to the Education Department in Fall 2020.
- Fall 2018 forward, the Business Administration program will transition from a BS degree to a BBA degree.
- The Accounting [BS] major has been discontinued and restructured to a concentration within Business Administration [BBA].
- General Studies [BS] is being phased out. General Studies [BA] was restructured/renamed to Professional Studies [BPS]. Prior to Fall 2017, General Studies was housed in the Department of Health & Kinesiology. Fall 2017 forward, the program will be housed in the Department of Business.
- Fall 2016 forward, the Business Administration programs/concentrations will contain both the BAS and BS degree programs.
- Public-Safety Administration [BA, BS] is being phased out.

Department of Culinary Arts

- In September 2022, the Pastry Arts [CPST] minor and the Culinary Managements [CMGT] minor were created under the Culinary Arts Department.
- In September 2022, the Nutrition and Health [NHLT] and Nutrition/Wellness [NWEL] minors were phased out and replaced by the newly created Nutrition [NUTR] minor.

Changes within the College of Nursing & Health Sciences

College of Nursing & Health Sciences will be called the Bill & Jo-Ann Vandergriff College of Nursing & Health Sciences as of Fall 2023.

Department of Associate Nursing

- Fall 2017 forward, all pre-majors will be coded in a degree program. Pre-Nursing ASN majors will be coded in Public Health Education [BS].

Department of Baccalaureate Nursing

- Fall 2017 forward, all pre-majors will be coded in a degree program. Pre-Nursing BSN majors will be coded in Public Health Education [BS].
- The Pre-Nursing BSN – Tupelo major was phased out in Fall 2017.

Department of Graduate Nursing

- The Post Masters Certificate Nursing [PMC] has been discontinued and restructured/renamed to Post Graduate Adv Pr Reg Nurse [PMC].

Department of Health & Kinesiology

- The General Studies program was moved to the Department of Business in Fall 2017.
- The Health Education [MS] program has been discontinued and restructured/renamed to Public Health [MPH].
- Prior to Fall 2017, 'Kinesiology - Exer Sci - Phys Ther' was coded as 'Exercise Sci-Physical Therapy'.

Changes within the Library College

Department of Library

- The Digital Studies [DGST] minor was created in Spring 2020 under the Library Department.

Appendix B: Explanation of Terms

Academic Year is the year that begins with the first summer session and continues through the next spring session; for example, Academic Year 2023-2024 refers to Summer 2023, Fall 2023, and Spring 2024.

ACT is the American College Test, which is divided into four main sections: Mathematics, English, Reading, and Science Reasoning.

Census Date is the official reporting date of a semester. For AY 2023-2024, the census date is November 1st for the Fall 2023 semester and April 1st for Spring 2024 semester. Prior to AY 2018-19, for the fall and spring semesters, there was a census window between the 10th and 15th class days; MUW typically selected the 10th day of classes as the census date. For summer, the census window is immediately following the official 'drop without penalty' date for each individual term. The census window for summer did not change in AY 2023-24. Summer enrollment is created by combining the individual terms.

CIP Codes are the Classification of Instructional Program Codes that are updated every 10 years. We are currently operating under the 2020 CIP Codes. These six-digit codes are used to answer questions concerning program enrollments and completions on three of the IPEDS Surveys: Institutional Characteristics, Completions, and Enrollment.

Cohort refers to a specific population, which is studied over a period of time, such as a group of students who enrolled for the first time in the Fall of 2023.

Fiscal Year is the year that begins on July 1 and ends on June 30; for example, Fiscal Year 2023 - 2024 (FY 2024) extends from July 1, 2023 through June 30, 2024.

Full-time graduate student is one who is enrolled in 9 or more semester credit hours.

Full-time undergraduate student is one who is enrolled in 12 or more semester credit hours.

Graduate FTE (full-time equivalent) is calculated by dividing total graduate semester credit hours by 12.

Headcount as defined by IHL is the actual number of different individuals enrolled in credit courses. Headcount can be unduplicated or duplicated; a duplicated headcount duplicates students who take classes on more than one campus. According to IHL's duplicated headcount definition, an undergraduate student who takes nine hours on main campus and three hours at

Tupelo is counted as two part-time undergraduate students. In duplicated headcount, a student's full-time/part-time status is determined by hours per campus not total hours taken.

IHL refers to the Board of Trustees of State Institutions of Higher Learning in Mississippi.

IHL Course File documents credit hour production by academic level and discipline for an academic term.

IHL Degree File contains the students receiving an IHL approved degree and/or certificate during an academic year.

IHL Employee File contains personnel data for each part-time and full-time employee on the payroll of the institution as of the official reporting date, November 1st.

IHL Instructional File contains academic and other information on those employees who are on the institution's payroll as of the official reporting date, November 1st, and serve in an instructional capacity at the institution.

IHL Student File includes information on all students enrolled at an institution on the census date who are taking academic courses while paying, or making financial arrangements to pay (including loans, scholarships, etc.), for the courses.

IPEDS is the Integrated Post-secondary Education Data System.

Non-traditional student, as defined by IHL, refers to an undergraduate student who is 25 years of age or over.

Part-time graduate student is one who is enrolled in less than 9 semester credit hours.

Part-time undergraduate student is one who is enrolled in less than 12 semester credit hours.

Ranked faculty are full-time faculty positions including instructors, assistant professors, associate professors, and professors.

SREB (Southern Regional Education Board) States include: Alabama, Arkansas, Delaware, Florida, Georgia, Kentucky, Louisiana, Mississippi, Maryland, North Carolina, Oklahoma, South Carolina, Tennessee, Texas, Virginia, and West Virginia.

Student Level, as defined by IHL

Definitions Effective as of the Beginning of Summer 2001

Freshmen – Students who have completed less than 30 semester hours.

Sophomores – Students who have completed at least 30 semester hours, but fewer than 60 semester hours.

Juniors – Students who have completed at least 60 semester hours, but fewer than 90 semester hours.

Seniors – Students who have completed at least 90 semester hours, but have not completed all the requirements for the undergraduate degree for which she/he is currently enrolled.

Fifth Year Level – Student is at advanced undergraduate upper level in five-year programs (e.g. architecture and engineering) or students with a bachelor's or higher degree who are taking additional undergraduate courses.

Master's – Student is in a program or degree that usually covers one year and approximately 30 semester hours above the baccalaureate.

Specialist – Student is in a program or degree that usually covers one year and approximately 30-36 semester hours above the baccalaureate.

Doctoral – Student is in a program or degree that usually covers two years and approximately 60 semester hours above the master's.

Unclassified Post-baccalaureate – Student is not a candidate for a Baccalaureate degree or other formal award, although taking graduate classes with other students. Includes but is not limited to “special” and other students taking first-professional or graduate courses, but who are not working toward a degree.

First Professional – Student is in the first year of a Year/Level 1 program or degree leading to the first level of professional training, as recognized by others in the profession. Examples: J.D., M.D., D.V.M., etc.

Total Operating Budget includes restricted, designated, and auxiliary funding.

Type of current registration as defined by IHL:

First-time Freshman – (First-time Freshman--(1) A student who has never attended a college or university; or (2) a student who has previously attended any college or university for the first time in the prior summer term; or (3) a recent high school graduate who graduated in May and enrolled the following Fall term (regardless of summer enrollment); or (4) a student who successfully completed the twelve hour Summer Developmental Program regardless of the institution

attended; or (5) a student with advanced standing (AP, CLEP or college credits earned before high school graduation).

As a general rule, recent high school graduates who enroll in the fall term after graduation should be counted as first-time freshmen, regardless of their academic activity between graduation and their fall enrollment. Students who skip the fall term and enter in the spring are still considered to be first-time freshmen if they have not attended another postsecondary institution. However, students who skip the fall and enroll in the spring with any prior coursework after high school are considered to be first-time transfers.

Note: Starting with the Summer 2009 term, the 12-hour requirement for first-time freshmen has been omitted in order to meet IPEDS criteria. Prior to that time first-time entering freshmen could not have more than 12 hours.

Unusual Examples of First-time Freshman:

A student completes the 9-week Summer Developmental Program at MSU and enrolls at MUW the following fall term. The student would be a first-time freshman at MUW.

All Summer Developmental Program students are to be coded as first-time freshmen regardless of institution attended.

A student graduates from Biloxi high school in May, earns 6 AP hours, takes 12 credit hours at Gulf Coast Community College the following summer, and enrolls at MUW the following fall. The student would be a first-time freshman at MUW.

A student graduates from Biloxi high school in May, takes 9 credit hours at Gulf Coast Community College the following summer, and enrolls at MUW the following spring term (he or she skips the fall term to work). *The student would be a first-time transfer at MUW.*

A student graduates from Tupelo high school in May, earns 15 AP hours, takes 15 credit hours at Northwest Community College the following summer, and enrolls at MUW the following fall. The student would be a first-time freshman at MUW (but have a sophomore academic level).

Returning Undergraduate Student – An undergraduate student who has registered at this institution during the preceding regular term and would not be classed as a first-time freshman.

Readmitted Student – An undergraduate student who previously attended this institution but did not attend this institution during the previous regular term.

First-Time Transfer Student --An undergraduate student entering the reporting institution for the first time who previously attended another postsecondary institution---exceptions include the first-time freshmen criteria outlined above. *These students may or may not have transfer credit hours.*

Note: Starting with the Summer 2009 semester, the 12-hour requirement for first-time transfers has been omitted in order to meet IPEDS criteria. Prior to that time first-time transfers were required to have at least 12 hours from another institution.

Note: Starting in Summer 2015, a student considered to be a first-time transfer student in the summer term should also be considered a first-time transfer student in the fall term (just as

summer first-time freshmen are also first-time freshmen in the fall).

Unusual Examples of First-time Transfers:

A student attends Gulf Coast Community College as an entering freshman during the fall term and enrolls in 12 hours, but he or she is unable to complete the semester because of a medical hardship. When the student enrolls at MUW the following spring term, he or she is a first-time transfer student despite having no transferable hours (previously attended institution).

A student graduates from Biloxi high school in May, takes 9 credit hours at Gulf Coast Community College the following summer, and enrolls at MUW the following spring term (he or she skips the fall term to work). *The student would be a first-time transfer at MUW.*

Returning or Transfer Graduate Students – A student who is enrolled for credit for work creditable toward a graduate degree, i.e., master’s, specialist, or doctorate and was previously registered as a graduate student at this institution or another institution.

First-Professional Student – A student who is enrolled for work creditable toward a first professional degree (law, dentistry, medicine).

Transient Student – A student who is regularly enrolled and in good standing at an institution other than the reporting institution and is taking a course or courses at the reporting institution which he/she intends to transfer to his/her regular institution.

High School Student Taking College Courses – A student who is still in high school but has special permission to take a college level course.

Non-formula Students 21 and over - A student who is currently registered under provisions or original admission code of 6 on data element 4-112 which is for students who are at least age 21 and who do not meet admissions standards and who do not fall into the first five Original Admission Code categories.

First-time graduate student – A new graduate student. One who has not been registered previously as a graduate student.

Other – A student who is not classified in one of the preceding categories.

Summer Developmental Program Participant – A student enrolled in the Summer Developmental Program. Valid in summer term only.

Returning Post Baccalaureate - A student who has already earned his or her baccalaureate degree (from any institution) and is taking additional undergraduate or graduate courses to continue his or her education. This is typically a non-degree student who is not enrolled in an academic program. This may include faculty and staff taking courses for lifelong learning.

Unduplicated headcount figures count each individual student once regardless of the number of branch campus affiliations (Gulf Coast, Hinds, Tupelo, Italy).

Undergraduate FTE (full-time equivalent) is calculated by dividing total undergraduate semester credit hours by 15.

University Abbreviations:

ASU	Alcorn State University
DSU	Delta State University
JSU	Jackson State University
MSU	Mississippi State University
MUW	Mississippi University for Women
MVSU	Mississippi Valley State University
UM	University of Mississippi
UMMC	University of Mississippi Medical Center
USM	University of Southern Mississippi
MSU-AFVM	Mississippi State University's Division of Agriculture, Forestry, and Veterinary Medicine
USM-GCRL	University of Southern Mississippi's Gulf Coast Research Laboratory
USM-Stennis	University of Southern Mississippi's Stennis Space Center



CAMPUS DIRECTORY

1100 COLLEGE STREET, COLUMBUS, MS

Barbara Garrett Tennis Facility	56	Marie Charlotte Stark Recreation Building	59
Barrow Hall and Physical Plant	54	Martin Hall	7
Callaway Hall	26	Mary Wilson Home	18
Carrier Chapel	22	McDevitt Hall	36
Child/Parent Development Center	49	Motor Pool	47
Columbus Hall	28	Nancy Harris Hogarth Cafeteria	37
Cromwell Communications Center	51	Orr Annex	24
Culinary Arts Building	68	Orr Building	25
Eckford Building (Health Center)	8	Painter Hall	5
Education & Human Sciences	48	Parkinson Hall	6
Emma Ody Pohl Physical Education Building	58	Peyton Hall	35
Eudora Welty Hall	23	Pohl Recreation	21
Facilities Maintenance Shop	66	Poindexter Hall	30
Fant Hall	20	President's Home	55
Fant Memorial Library	15	Puckett House	2
Franklin House	31	Reneau Hall	17
Frazier Hall	13	Soccer Field	45
Goen Hall	14	Shackleford Hall	42
Greenspace	52	Shattuck Hall	32
Grossnickle Hall	4	Stovall House (Welcome Center)	3
Grounds Maintenance & Automotive Building	46	Summer Hall	10
Hastings-Simmons Hall	29	Support Building	57
Hogarth Student Union	38	Support Building	67
Hooper Science Hall	16	Thad & Rose Cochran Hall	27
Jones Hall	12	Turner Hall	9
Kincannon Hall	11	University Apartment Bld. 3	60
Legacy Garden	19	University Apartment Bld. 1	61
MSMS Performing Arts Center	44	University Apartment Bld. 2	62
MSMS Student Services	43	University Apartment Bld. 4	63
MUW Counseling Center	50	University Apartment Bld. 5	64
		University Apartment Bld. 6	65
		Whitfield Hall	1

- Administrative
- Academic
- Residential
- Support
- MSMS
- Decommissioned



